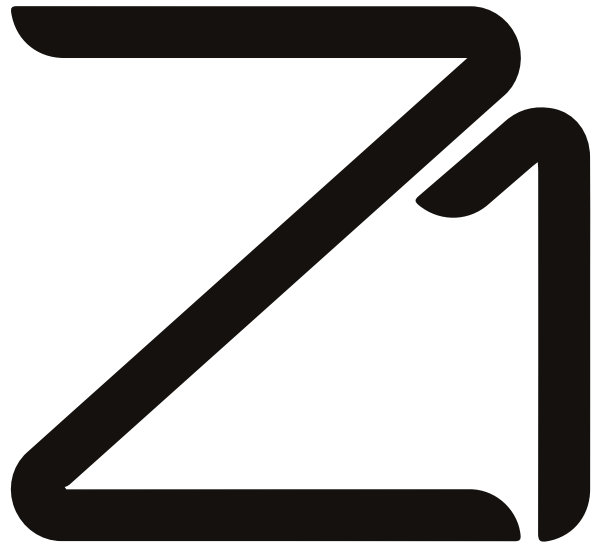




Tissue Level Implants  
with Zirconia Collar





## YOUR COMFORT IN IMPLANTOLOGY

Launched in the year 2000, the Z1 system is the result of 15 years of innovative research in implant restoration.

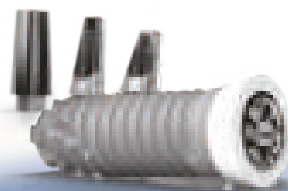
The philosophy of the Z1 system is clear: it perfectly suits every kind of anatomy. It is the only "tissue level" implant that adapts **selected materials, zirconia and titanium**, to the surrounding tissues.

Several successive generations of Z1 implants have all been designed to obtain the same result: to bring you **the highest level of overall comfort**.

The first users of the Z1 system rapidly learned how to benefit from its advantages, thereby ensuring **intellectual peace of mind and material well-being** in their implant practice.

**United around this incomparable technology**, they are ready to share their experience and welcome you into the very privileged circle of Z1 users.

*Z1, one signature:  
Z for Zirconia,  
1 for 1 surgical stage.*



### Bibliographical references: see our "Scientific Studies" brochure

MALTAGLIATI A., SERGIAMPIETRI D., OTT ONELLO E A., Ruolo del collare in zirconio nella gestione della perimplantite: case report, 2016  
SURYAVANSHI S. et al., Comparative evaluation of the soft tissue response and esthetics of the titanium implants with Zirconium collar, 2011  
MAGLIONE M. et al, Analysis of the wetting characteristics and behavior of stem cells on different implant surfaces, 2011  
LABORATOIRE LEMI, Rapport histologique: implantations dans le tissu sous cutané de rat d'implants à technologie zircone-titane, 2011  
TETÉ et al., Collagen fiber orientation around machined titanium and zirconia dental implant necks : an animal study. JOMI 2009; 24  
BIANCHI, A.E et al. In vitro and In Vivo Follow-up of titanium transmucosal implant with zirconia collar. JABB Vol2, Number 3, 2004  
RIMONDINI L. et al., Bacterial Colonization of Zirconia Ceramic Surfaces: An In vitro and In Vivo Study. JOMI 2002; 17, 6  
BENHAMOU A., Aesthetics and implants: the contribution of the MCB. JOP1994: 63-7

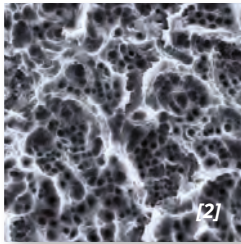
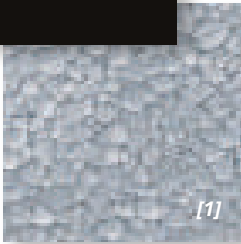
# CONTENTS

<b>GUIDELINES</b>	<b>P</b>	<b>4</b>
<b>Z1-OCTAGONAL CONNECTION</b>	<b>P</b>	<b>9</b>
Z1-INFINITY IMPLANTS	P	10
Z1-CONNECT IMPLANTS	P	12
SURGERY AND MANAGEMENT OF GINGIVAL TISSUES	P	14
IMPRESSION-TAKING STAGE	P	16
PROSTHETIC SOLUTIONS	P	18
FIXED CEMENTED PROSTHESIS SOLUTIONS	P	20
FIXED SCREW-RETAINED PROSTHESIS SOLUTIONS	P	22
STABILISATION OF REMOVABLE PROSTHESIS SOLUTIONS	P	24
<b>Z1-MORSE TAPER CONNECTION</b>	<b>P</b>	<b>27</b>
Z1-M IMPLANTS	P	28
SURGERY AND MANAGEMENT OF GINGIVAL TISSUES	P	30
IMPRESSION-TAKING STAGE	P	32
PROSTHETIC SOLUTIONS	P	34
FIXED CEMENTED PROSTHESIS SOLUTIONS	P	36
FIXED SCREW-RETAINED PROSTHESIS SOLUTIONS	P	37
STABILISATION OF REMOVABLE PROSTHESIS SOLUTIONS	P	38
<b>INSTRUMENTATION &amp; ACCESSORIES</b>	<b>P</b>	<b>41</b>



# TECHNOLOGICAL COMFORT

through well-proven technology



[1] SEM picture - zirconia surface Y-TZP x6000  
[2] SEM picture - pure grade 4 titanium surface x2500

- On a macroscopic scale, the Z1 system includes all the components required for successful implant surgery: **biocompatibility, mechanical strength, primary stability and longevity.**
- On a microscopic scale, the surface condition of zirconia and pure titanium plays an essential role in the stabilisation of soft tissues and in the perfect osseointegration. With **an average success rate of 98.6%\***, you can rely on the efficiency of Z1.

“Average success rate of 98.6%\*”

The Z1 system is universal and can suit all types of prosthetic restoration: fixed cemented or screw-retained solutions, or stabilisation of removable prostheses.

Compared to the restrictions imposed by a “bone level” implant system, **you handle all prosthetic solutions with fewer product codes.**

\* Results collected from data of the Smiletranquility® Program based on a panel of 15,534 patients given Z1 implants during the period January 2014 - January 2016.

# CLINICAL COMFORT

for patients' well-being

With the Z1 implant you obtain **clinical outcomes that have never been matched** by a traditional bone level implant.

The zirconia emergence of the Z1 behaves as **a protective shield** for both crestal bone and gingiva, preventing any inflammatory or infectious phenomena.

The Z1 ensures **better aesthetic management of the gingival tissue** by generating a creeping attachment of the gingiva and a reconstruction of the papillae:

- With a Z1 placed in anterior position, **there is no greyish transparency.**
- With a Z1 placed in posterior position, **the cervical limits of your prosthetic rehabilitation are optimised** by the zirconia platform.

“I no longer have to worry about grey spots appearing in my gum after a few years!”

Better cell behaviour on zirconia.

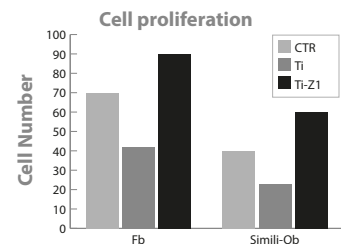


Chart [1] - Enumeration of fibroblasts and osteoblasts after 6 hours of incubation - Proliferation test on pure titanium (Ti), zirconia collar (Ti-Zi) and on a control sample of Thermanox (CTR).

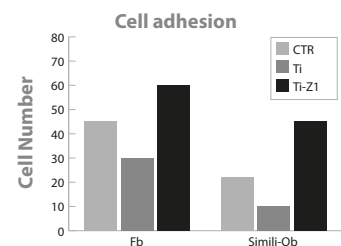


Chart [2] - Enumeration of fibroblasts and osteoblasts after 4 hours of incubation - Adhesion test on pure titanium (Ti), zirconia collar (Ti-Zi) and on a control sample of Thermanox (CTR).

# SURGICAL COMFORT

for practitioners' well-being

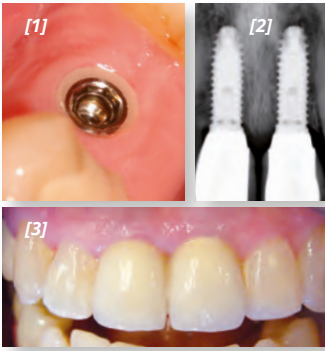


Fig [1] - Z1 collar in juxta-gingival position

Fig [2] - X-ray of Z1 implants in anterior position 11 and 21

Fig [3] - Final restoration with Z1 implants in position 11 and 21

The advantage of the "1 stage" implant is precisely the fact that it does not need 2 operations! With Z1, benefit from numerous advantages at every step:

- you open the surgical site **only once**, better for you and your patients,
- The Z1 is perfectly autonomous and **manages bone and gingival healing by itself**, as it perfectly meets the requirements of both tissues.

*" Z1 facilitates every step. "*

- you have **great visibility**, you can observe your movements and perfectly control the components to connect with your Z1 implant,
- you no longer need **healing screws**, you work with a cover screw [included with the implant] that is visible and easily accessible,
- sutures are made around the implant or are **unnecessary** with the flapless technique.

# ECONOMIC COMFORT

for more profitable implantology

The Z1 is the preferred implant for implantologists who want to optimise their chair time. Like them, estimate your profit by using Z1:

- **only one surgery is needed**, which means that your surgical block and sterilisation line will only be used once for each patient,
- your **surgical block agenda is totally controlled**, the aesthetic outcomes achieved on first intention reduce the number of secondary surgical procedures,
- your **maintenance appointments are reduced** because there is less risk of periodontal disease, and thus fewer post-surgical treatments,
- your **inventory is simplified** by a lower, optimised number of products.

*"The Z1 system saves time in the chair that I can then spend on developing my patient portfolio."*



Total maxillary and mandibular restoration with 14 Z1 implants.





# SOME GUIDELINES...

## Make surgery and prosthesis easier!

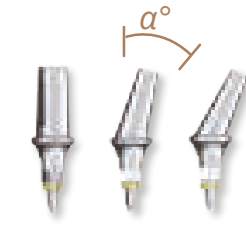
TBR implants and prosthetics systems have a multitude of benefits and tools to simplify your daily practice.

- Z1 zirconia-titanium implants
- Angulation kit
- Shoulder height selector
- Torque wrench



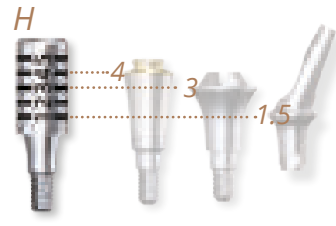
### Benefits

- Anti-bacterial shield
- Enhanced cell adhesion and proliferation
- Gingival creeping attachment and natural restructuring of the papillae
- Better aesthetic management of the gingival tissue



### Tips for use

The angulation kit makes it easy to select the appropriate angulation for the clinical case requiring treatment.



### Tips for use

The shoulder height selector measures the available gingiva.



### Dual function

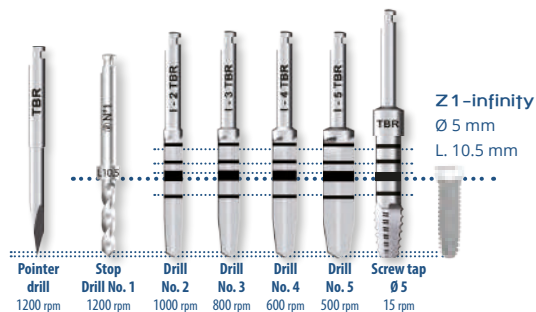


## Drilling sequence



### Tips for use

The TBR implants are placed in the bone following a unique and simple drilling protocol.



## Implant platform & Universal colour code

To make it easier to identify the right components to use, all our systems are colour-coded.

The reference of this code is the **diameter of the implant platform**, each platform thus having its own colour.



		1  SOFT TISSUE LEVEL IMPLANTS
IMPLANTS WITH MORSE TAPER CONNECTION	Ø3.2	● Gold
	Ø3.9	● Pink
	Ø4.7	● Violet
IMPLANTS WITH OCTAGONAL CONNECTION	Ø3.5	Z1-infinity ● Gold      Z1-Connect ● Pink
	Ø4	● Pink
	Ø5	● Violet

The temporary titanium prosthetic component families follow this colour code:

- Healing screws
- Cover screws
- Impression transfers
- Analogues

# ... FOR BETTER ORIENTATION.

## Packaging and text

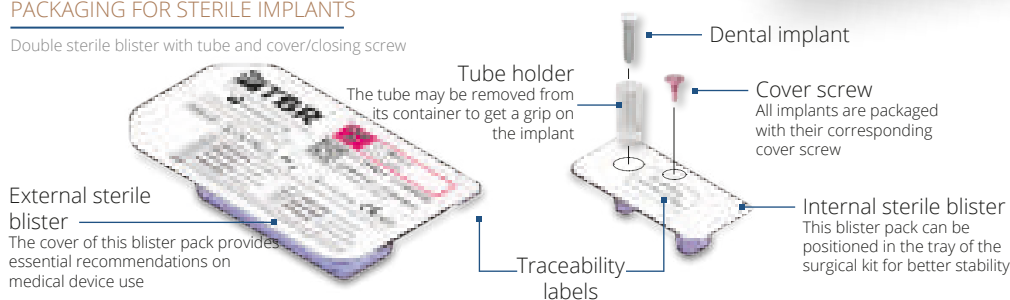
Each product is checked and packaged individually, in an ultra-clean environment. You and all TBR users expect your manufacturer to provide a product with **guaranteed origin and quality**. All our products, sterile or non-sterile, carry the CE mark and therefore meet the regulatory requirements associated with all medical devices.



## Implant

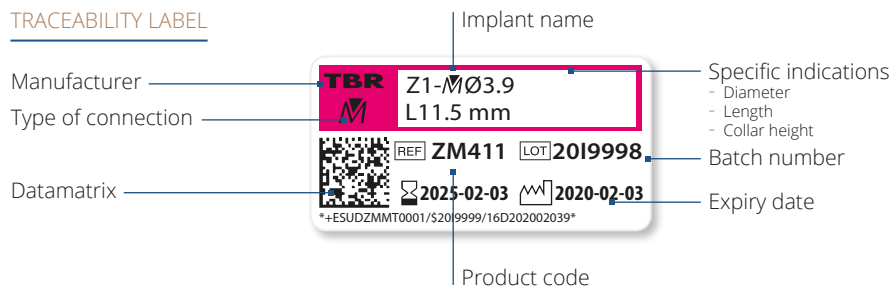
### PACKAGING FOR STERILE IMPLANTS

Double sterile blister with tube and cover/closing screw



Packaging containing 4 detachable and repositionable traceability labels

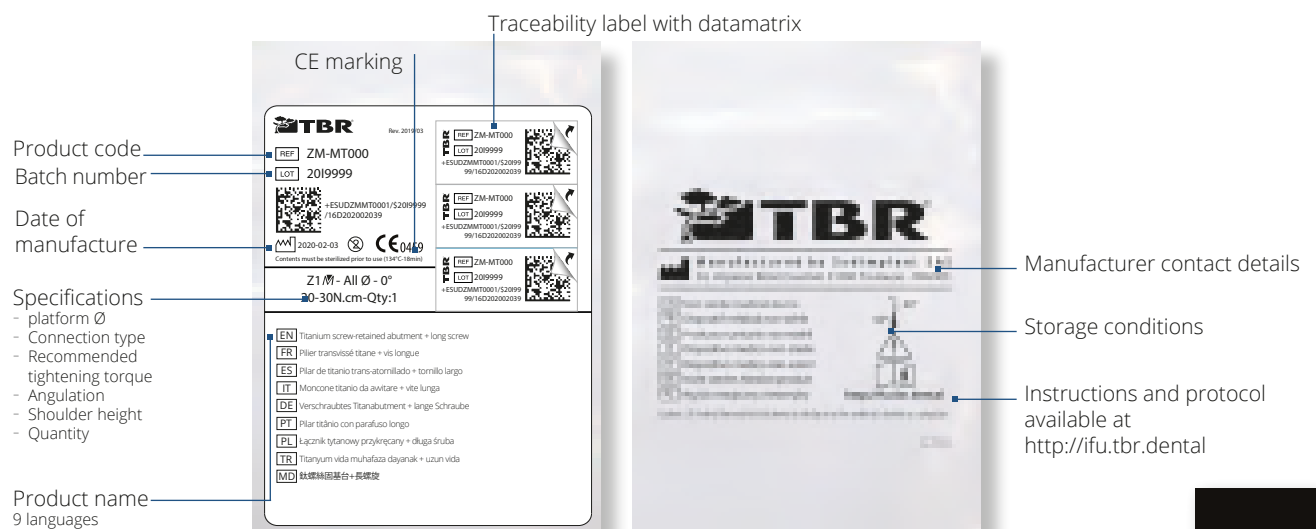
### TRACEABILITY LABEL



## Prosthesis

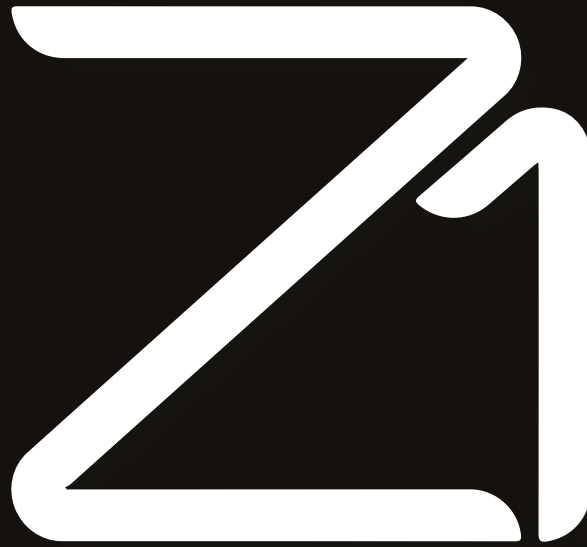
### PACKAGING FOR NON-STERILE PROSTHETIC COMPONENTS

Individual sachet with 3 detachable and repositionable labels



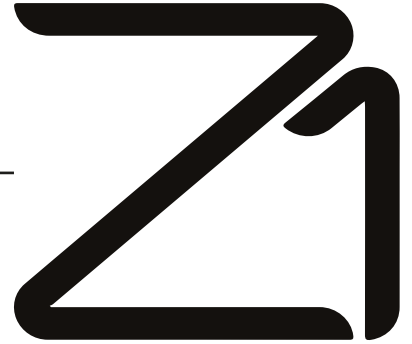






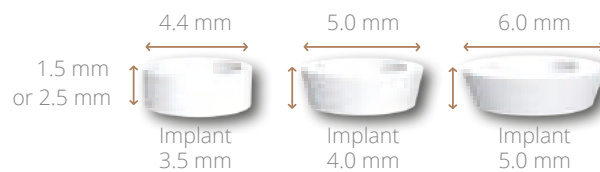
Implant systems with  
**8 Connection**  
Flat friction &  
Internal octagon





### ZIRCONIA TRANSGINGIVAL COLLAR

- Anti-bacterial shield
- Enhanced cell adhesion and proliferation
- Gingival creeping attachment and natural restructuring of the papillae
- Better aesthetic management of the gingival tissue



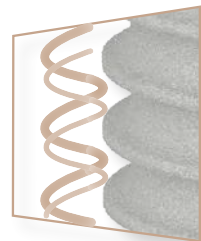
### SWISSCLIP TECHNOLOGY

- Clipping system between the implant and the screw tools for contra-angle or for torque wrench
- Gripping and direct positioning of the implant without digital contact
- Real time-saving and high accuracy
- Available for direct technique transfers and for the angulation kit



### ASYNCHRONOUS DUAL SCREW THREAD

- Self-tapping rounded macrothreads
- Prevention of cortical bone compression phenomena
- Optimal primary stability



### MATERIALS

- **Zirconia Y-TZP:** Ytria Tetragonal Zirconia Polycrystal Y-TZP zirconia meets the requirements of ISO 13356 and the American Society for Testing and Materials (ASTM F 1873)
- **Grade 4 Titanium:** T60 commercially pure Grade 4 T60 commercially pure titanium meets the requirements of ISO 5832-2 and the American Society for Testing and Materials (ASTM F67 3.7065)



# -infinity



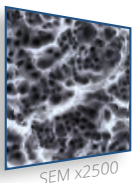
## 1 STAGE IMPLANTS - SOFT TISSUE LEVEL

The Zirconia Y-TZP collar technology has proven to be a real aesthetic anti-bacterial shield.

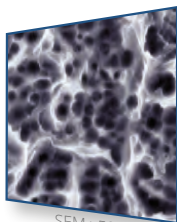


### CC BIOSHAPE

- Conical cruciform apex with a wide thread diameter
- Cylindrical body to maintain close bone contact
- Optimal primary stability and insertion safety



SEM x2500



SEM x5000

### SURFACE TREATMENT

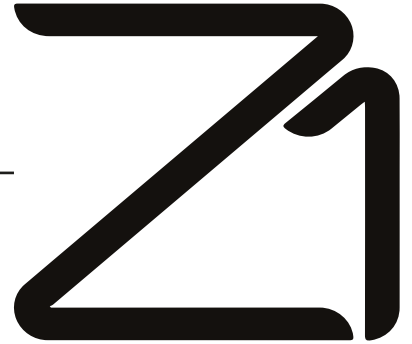
The implants incorporate a **sandblasting and hydrofluoric acid-etching** surface treatment that promotes the osseointegration process.



### ATRAUMATIC APEX

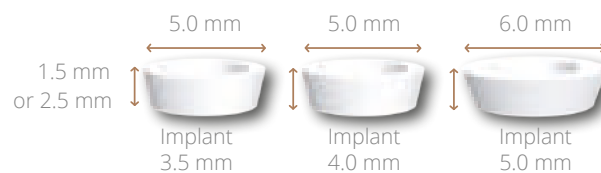
- Apex with atraumatic convexity
- Ideal for sinus lifts
- Self-tapping claw





### ZIRCONIA TRANSGINGIVAL COLLAR

- Anti-bacterial shield
- Enhanced cell adhesion and proliferation
- Gingival creeping attachment and natural restructuring of the papillae
- Better aesthetic management of the gingival tissue



### CC BIOSHAPE

- Self-tapping conical cruciform apex
- Cylindrical body to maintain close bone contact
- Optimal primary stability and insertion safety



### SWISSCLIP TECHNOLOGY

- Clipping system between the implant and the screw tools for contra-angle or for torque wrench
- Gripping and direct positioning of the implant without digital contact
- Real time-saving and high accuracy
- Available for direct technique transfers and for the angulation kit



### MATERIALS

- **Zirconia Y-TZP:** Ytria Tetragonal Zirconia Polycrystal Y-TZP zirconia meets the requirements of ISO 13356 and the American Society for Testing and Materials (ASTM F 1873)
- **Grade 4 Titanium:** T60 commercially pure Grade 4 T60 commercially pure titanium meets the requirements of ISO 5832-2 and the American Society for Testing and Materials (ASTM F67 3.7065)

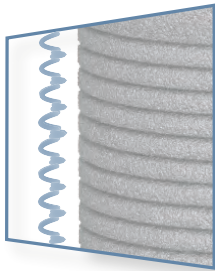


# -Connect



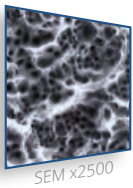
## 1 STAGE IMPLANTS - SOFT TISSUE LEVEL

The Zirconia Y-TZP collar technology has proven to be a real aesthetic anti-bacterial shield.

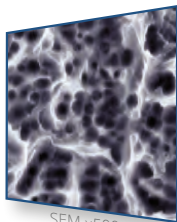


### MICROTHREADED COLLAR

- Limits the effects of micro-movements
- Drastically reduces inflammatory infiltration on the peri-implant crestal bone, and preserves the vertical integrity of the bone ridge
- Improved vascularisation of the area, thus protecting the peri-implant periodontal tissue



SEM x2500



SEM x5000

### SURFACE TREATMENT


The implants incorporate a **sandblasting and hydrofluoric acid-etching** surface treatment that promotes the osseointegration process.




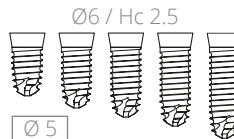
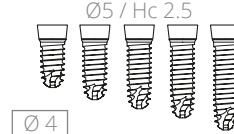
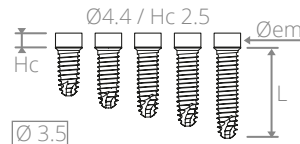
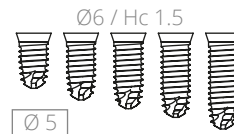
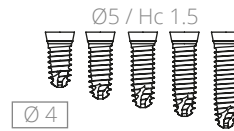
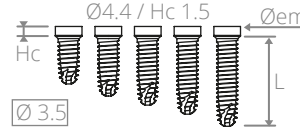
### ATRAUMATIC APEX

- Apex with atraumatic convexity
- Ideal for sinus lifts
- Self-tapping claw

## Dental implant range 8 - Family: Z1-infinity

Z1-infinity with Zirconia collar height 1.5 mm				
Diameter (mm) \ Length (mm)	Implant Ø3.5 mm	Implant Ø4 mm	Implant Ø5 mm	Preview
8 mm	ZI308	ZI408	ZI508	
10.5 mm	ZI310	ZI410	ZI510	
11.5 mm	ZI311	ZI411	ZI511	
13 mm	ZI313	ZI413	ZI513	
15.5 mm	ZI315	ZI415	ZI515	

Z1-infinity with Zirconia collar height 2.5 mm				
Diameter (mm) \ Length (mm)	Implant Ø3.5 mm	Implant Ø4 mm	Implant Ø5 mm	Preview
8 mm	ZHI308	ZHI408	ZHI508	
10.5 mm	ZHI310	ZHI410	ZHI510	
11.5 mm	ZHI311	ZHI411	ZHI511	
13 mm	ZHI313	ZHI413	ZHI513	
15.5 mm	ZHI315	ZHI415	ZHI515	

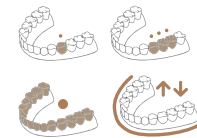


**Technical pattern**  
 Øem: Emergence diameter  
 Hc: Zirconia collar height  
 L: Length



Delivered with a cover screw

### Indication



### Colour code

● Ø3.5 ● Ø4 ● Ø5

### New Zirconia collar height



## Management of gingival tissues using Zirconia technology

Ø implant	Øem (mm)	Hg (mm)	Preview
Ø3.5 Z1-infinity	Ø4.4	1.5	
Ø3.5 Z1-Connect Ø4	Ø5		
Ø5	Ø6		
Ø3.5 Z1-infinity	Ø4.4	2.5	
Ø3.5 Z1-Connect Ø4	Ø5		
Ø5	Ø6		



### Benefits of Zirconia technology

- Immediate aesthetic result
- Surgical phases in one surgical stage
- Simplification of the impression phase
- Simplification of the suture phase
- Simplification of the healing phase
- Anti-bacterial shield

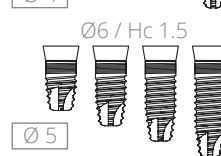
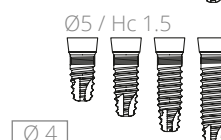
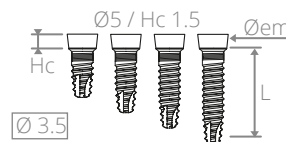
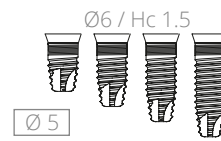
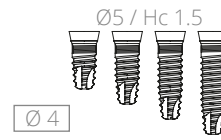
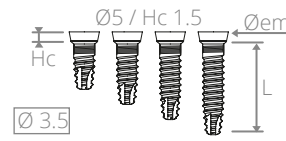
# Z1-infinity Z1-Connect



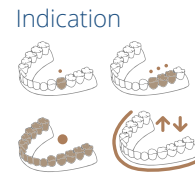
## Dental implant range 8 - Family: Z1-Connect

Z1-Connect with Zirconia collar height 1.5 mm				
Diameter (mm) \ Length (mm)	Implant Ø3.5 mm	Implant Ø4 mm	Implant Ø5 mm	Preview
8 mm	ZBX308	ZBX408	ZBX508	
10.5 mm	ZBX310	ZBX410	ZBX510	
13 mm	ZBX313	ZBX413	ZBX513	
15.5 mm	ZBX315	ZBX415	ZBX515	

Z1-Connect with Zirconia collar height 2.5 mm				
Diameter (mm) \ Length (mm)	Implant Ø3.5 mm	Implant Ø4 mm	Implant Ø5 mm	Preview
8 mm	ZHX308	ZHX408	ZHX508	
10.5 mm	ZHX310	ZHX410	ZHX510	
13 mm	ZHX313	ZHX413	ZHX513	
15.5 mm	ZHX315	ZHX415	ZHX515	



**Technical pattern**  
 Øem: Emergence diameter Setting 45 N.cm  
 Hc: Zirconia collar height  
 L: Length  
 Delivered with a cover screw



**Colour code**  
 ● Ø3.5 / Ø4 ● Ø5

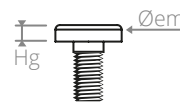
**New Zirconia collar height**

1.5 mm  
 2.5 mm

All Zirconia titanium implants are available in 2 distinct collar height :  
 1.5 mm or 2.5 mm.

## Cover screw

Ø implant	Øem (mm)	Hg (mm)	Product code	Preview
Ø3.5 Z1-infinity	Ø4.4	1.1	ZI-VIO400	
Ø3.5 Z1-Connect Ø4	Ø5		ZC-VIO500	
Ø5	Ø6		ZC-VIO600	

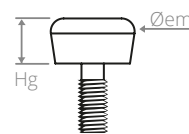


**Technical pattern**  
 Øem: Emergence diameter Manual screwing  
 Hg: Gingival height

**Colour code**  
 ● Ø3.5 Z1-infinity ● Ø3.5 Z1-Connect  
 ● Ø4 ● Ø5

## Optional healing screw

Ø implant	Øem (mm)	Hg (mm)	Product code	Preview
Ø3.5 Z1-infinity	Ø5	3	ZI-VT430	
		5	ZI-VT450	
Ø3.5 Z1-Connect Ø4	Ø5.6	3	ZC-VT530	
		5	ZC-VT550	
Ø5	Ø6.6	3	ZC-VT630	
		5	ZC-VT650	



**Technical pattern**  
 Øem: Emergence diameter Manual screwing  
 Hg: Gingival height

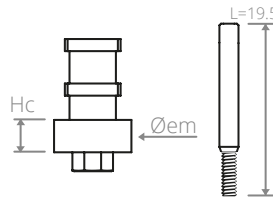
**Colour code**  
 ● Ø3.5 Z1-infinity ● Ø3.5 Z1-Connect  
 ● Ø4 ● Ø5

### Tips for use

When a soft tissue level implant is used, the healing screw is useful in the case of a thick gum.

## ■ Impression Transfer - Direct Technique "Pick-up"

Ø implant	Øem (mm)	Hc (mm)	Product code	Preview
Ø3.5 Z1-infinity	Ø4.4	2	ZI-TD400	
Ø3.5 Z1-Connect	Ø5		ZC-TD500	
Ø5	Ø6		ZC-TD600	



### Technical pattern

Hc: Cylindrical height  
Øem: Emergence diameter

Manual screwing  
Delivered with one screw Ref. VTD155

### Indication

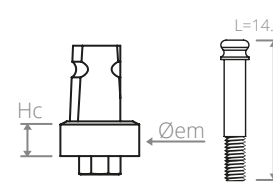


### Colour code

● Ø3.5 z1-infinity ● Ø3.5 Z1-Connect ● Ø4 ● Ø5

## ■ Impression Transfer - Indirect Technique "Pop-in"

Ø implant	Øem (mm)	Hc (mm)	Product code	Preview
Ø3.5 Z1-infinity	Ø4.4	2	ZI-TI400	
Ø3.5 Z1-Connect	Ø5		ZC-TI500	
Ø5	Ø6		ZC-TI600	

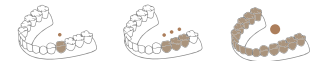


### Technical pattern

Hc: Cylindrical height  
Øem: Emergence diameter

Manual screwing  
Delivered with one screw Ref. VTI155

### Indication

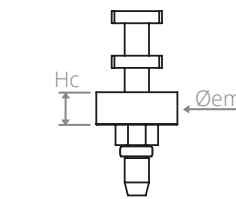


### Colour code

● Ø3.5 z1-infinity ● Ø3.5 Z1-Connect ● Ø4 ● Ø5

## ■ Impression Transfer - Direct Technique "SwissClip"

Ø implant	Øem (mm)	Hc (mm)	Product code	Preview
Ø3.5 Z1-infinity	Ø4.4	2	ZI-TDC400	
Ø3.5 Z1-Connect	Ø5		ZC-TDC500	
Ø5	Ø6		ZC-TDC600	



### Technical pattern

Hc: Cylindrical height  
Øem: Emergence diameter

### Indication



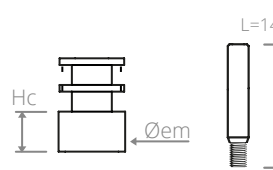
### Colour code

● Ø3.5 z1-infinity ● Ø3.5 Z1-Connect ● Ø4 ● Ø5

Tips for use Optimal use when the implant axis is straight.

## ■ Impression Transfer - Direct Technique for Multi-Unit Abutment

Ø implant	Øem (mm)	Hc (mm)	Product code	Preview
Ø3.5 Z1-infinity	Ø4.25	3	ZM-TDP400	
Ø3.5 Z1-Connect	Ø5		ZC-TDP500	
Ø5	Ø6		ZC-TDP600	

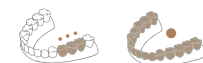


### Technical pattern

Hc: Cylindrical height  
Øem: Emergence diameter

Manual screwing  
Delivered with one screw Ref. VTD098

### Indication

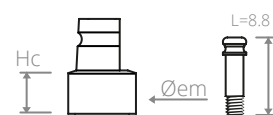


### Colour code

● Ø3.5 z1-infinity ● Ø3.5 Z1-Connect ● Ø4 ● Ø5

## ■ Impression Transfer - Indirect Technique for Multi-Unit Abutment

Ø implant	Øem (mm)	Hc (mm)	Product code	Preview
Ø3.5 Z1-infinity	Ø4.25	3	ZM-TIP400	
Ø3.5 Z1-Connect	Ø5		ZC-TIP500	
Ø5	Ø6		ZC-TIP600	

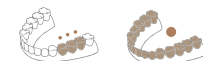


### Technical pattern

Hc: Cylindrical height  
Øem: Emergence diameter

Manual screwing  
Delivered with one screw Ref. VTI088

### Indication

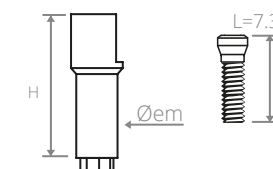


### Colour code

● Ø3.5 z1-infinity ● Ø3.5 Z1-Connect ● Ø4 ● Ø5

## ■ Scanbody - Digital transfer

Ø implant	Øem (mm)	H (mm)	Product code	Preview
Ø3.5	Ø3.5	12	O-SCN000	
Ø4		7	O-SCN007	
Ø5				



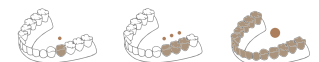
### Technical pattern

H: PEEK part height  
Øem: Emergence diameter

Manual screwing  
Delivered with one screw Ref. VIM052

### Special CAD / CAM

### Indication



Tips for use For multi-unit abutment restorations, use the PEEK scanbodies sheaths provided for this purpose (P23).

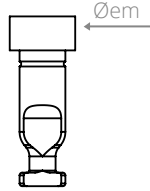


# Z1-infinity Z1-Connect



## ■ Implant analogue

Ø implant	Øem (mm)	Product code	Preview
Ø3.5 Z1-infinity	Ø4.4	ZI-RU400	
Ø3.5 Z1-Connect Ø4	Ø5	ZC-RU500	
Ø5	Ø6	ZC-RU600	



### Technical pattern

Ø implant: Implant platform diameter

### Indication

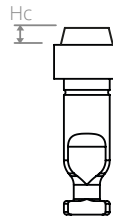


### Colour code

● Ø3.5 z1-infinity ● Ø3.5 Z1-Connect ● Ø4 ● Ø5

## ■ Multi-unit abutment analogue

Ø implant	Hc	Product code	Preview
Ø3.5 Z1-infinity	1	ZM-HPU400	
Ø3.5 Z1-Connect Ø4		ZC-HPU500	
Ø5		ZM-HPU600	



### Technical pattern

Ø implant: Implant platform diameter

Hc: Cone height (replica of the multi-unit abutment)

### Indication



### Colour code

● Ø3.5 z1-infinity ● Ø3.5 Z1-Connect ● Ø4 ● Ø5

## ■ Equator® abutment analogue

Ø implant	Product code	Preview
Ø3.5 Ø4 Ø5	HEQU000 (144AE)	

## ■ Equator® abutment transfer

Ø implant	Product code	Preview
Ø3.5 Ø4 Ø5	TEQU200 (x2) (044CAIN)	

## ■ Locator® abutment analogue

Ø implant	Product code	Preview
Ø3.5 Ø4	HLOC400 (8530)	
Ø5	HLOC500 (8516)	

## ■ Locator® abutment transfer

Ø implant	Product code	Preview
Ø3.5 Ø4 Ø5	TDLOC100 (8505)	

# Standard prosthetic solutions

## Cemented prosthesis

## Screw-retained prosthesis

Titanium final abutment



P. 20



PEEK temporary abutment



P. 20



Non-rotational overflow ring + Castable sheath or castable abutment



P. 22



Rotational overflow ring + Castable sheath or castable abutment



P. 22



## Secondary elements

PEEK sheath for immediate temporary prosthesis



Titanium sheath for immediate final prosthesis



Cr/Co sheath for soldered bar



Non-rotational overflow ring + Castable sheath or castable abutment



P. 22




Rotational overflow ring + Castable sheath or castable abutment



P. 22



Straight or angulated multi-unit abutment + Castable sheath



P. 23



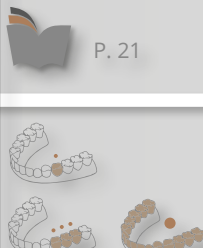
# Customised prosthetic solutions

Additional parts for CAD / CAM use


CEREC®-compatible Ti-base



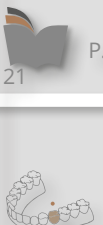
P. 21




Non-rotational Ti-base



P. 21

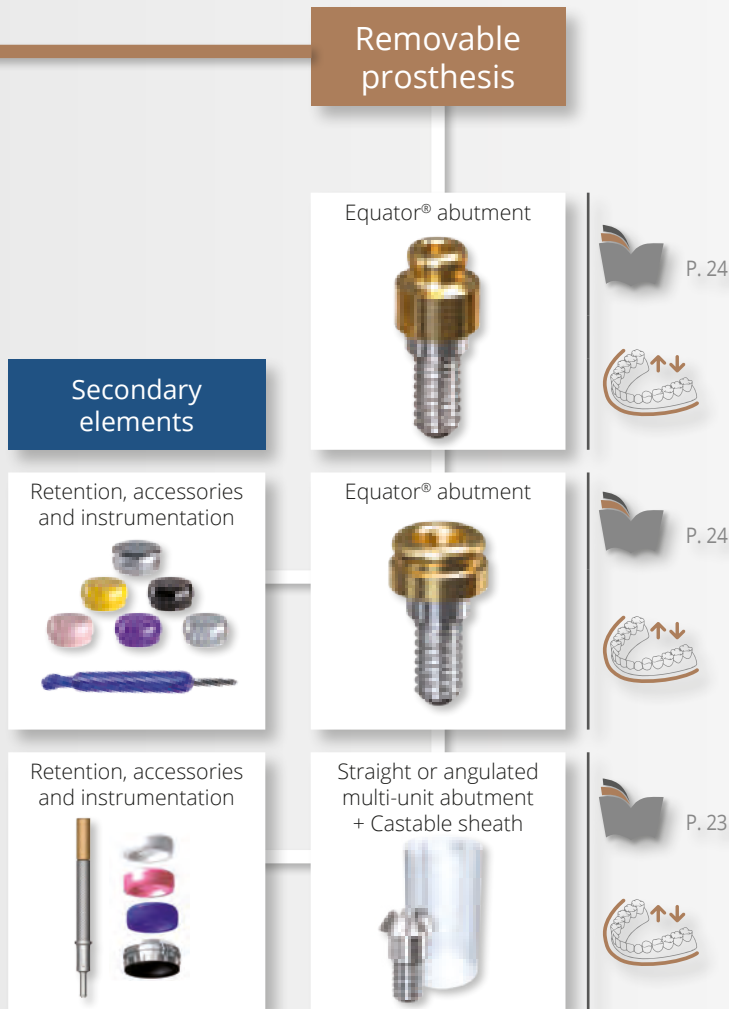


Rotational Ti-base



P. 21





## Caption and comments



SINGLE-UNIT FIXED RESTORATION



FULL-ARCH FIXED RESTORATION



1 STAGE IMPLANT SOFT TISSUE LEVEL



COMPONENT THAT CAN BE USED BY YOUR CAD / CAM SYSTEM



MULTIPLE-UNIT FIXED RESTORATION



REMOVABLE RESTORATION



REFER TO THE SPECIFIED PAGES



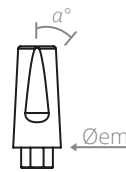
RECOMMENDED TIGHTENING TORQUE



The final prosthetic components are gradually being delivered with 2 screws:  
 - 1 laboratory screw,  
 - 1 final screw.

## Titanium final abutment

Ø implant	Øem (mm)	α°	Product code	Preview
Ø3.5 Ø4 Ø5	Ø4	0°	ZC-MT000	
		15°	ZC-MT001	
		25°	ZC-MT002	



Technical pattern

Screwing  
30 N.cm

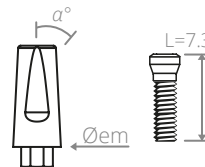
Øem: Emergence diameter  
α°: Angulation  
Delivered with  
2 screws Ref. VIM052

Indication



## PEEK temporary abutment

Ø implant	Øem (mm)	α°	Product code	Preview
Ø3.5 Ø4 Ø5	Ø4	0°	ZC-MP000	
		15°	ZC-MP001	



Technical pattern

Screwing  
30 N.cm

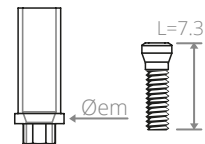
Øem: Emergence diameter  
α°: Angulation  
Delivered with one  
screw Ref. VIM052

Indication



## Non-rotational castable abutment

Ø implant	Øem (mm)	Product code	Preview
Ø3.5 Z1-infinity	Ø4	O-MC400	
Ø3.5 Z1-Connect Ø4	Ø5	O-MC500	
Ø5	Ø6	O-MC600	

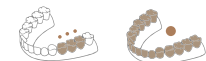


Technical pattern

Screwing  
30 N.cm

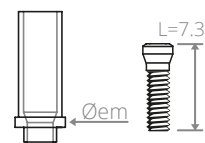
Øem: Emergence diameter  
Delivered with  
2 screws Ref. VIM052

Indication



## Rotational castable abutment

Ø implant	Øem (mm)	Product code	Preview
Ø3.5 Z1-infinity	Ø4	O-MCR400	
Ø3.5 Z1-Connect Ø4	Ø5	O-MCR500	
Ø5	Ø6	O-MCR600	



Technical pattern

Screwing  
30 N.cm

Øem: Emergence diameter  
Delivered with  
2 screws Ref. VIM052

Indication

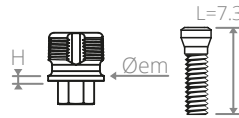


# Z1-infinity Z1-Connect



## ■ Non-rotational Ti-base / connection base

Ø implant	Øem (mm)	Hg (mm)	Product code	Preview
Ø3.5	Ø4.25	0.5	ZC-BAS000	
Ø4				
Ø5				



### Technical pattern

H: Platform height  
Øem: Emergence diameter

Screwing 30 N.cm  
Delivered with 2 screws Ref. VIM052

Special CAD / CAM

Indication

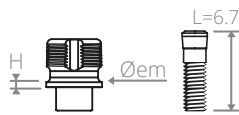


Tips for use

For a better aesthetic result, in the case of a Z1 implant, the crown must cover the Ti-base and come to rest directly on the zirconia platform of the implant.

## ■ Rotational Ti-base / connection base

Ø implant	Øem (mm)	Hg (mm)	Product code	Preview
Ø3.5	Ø4.25	0.5	ZC-BASR000	
Ø4				
Ø5				



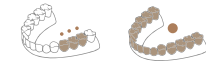
### Technical pattern

H: Platform height  
Øem: Emergence diameter

Screwing 30 N.cm  
Delivered with 2 screws Ref. VIM053

Special CAD / CAM

Indication

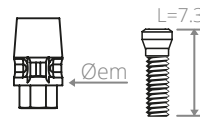


Tips for use

For a better aesthetic result, in the case of a Z1 implant, the crown must cover the Ti-base and come to rest directly on the zirconia platform of the implant.

## ■ CEREC®-compatible Ti-base

Ø implant	Hg (mm)	Block L	Ø Shldr* L	Preview
	0			
Z1-infinity Ø3.5	ZC-TBS000 <sup>(2)</sup>	AT OS 3.5/4.0	Ø4.4	 Emergence Ø3.4 mm
Z1-Connect Ø3.5		AT OS 4.5/5.0	Ø5.0	
Ø4.0		B O 5.0	Ø6.0	
Ø5.0				



### Technical pattern

H: Platform height  
Øem: Emergence diameter

Screwing 30 N.cm  
Delivered with 2 screws Ref. VIM052

Special CAD / CAM

Indication



Tips for use The CEREC®-compatible Ti-bases are used with SIRONA® scanbodies:



Product code for **Omnicam**  
**6431311** block S  
**6431329** block L



Product code for **Bluecam**  
**6431295** block S  
**6431303** block L

The CEREC® brand is the exclusive property of SIRONA.

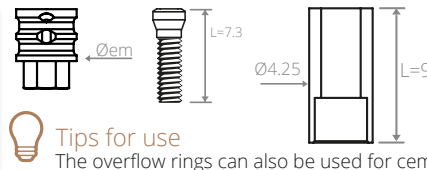
(\* ) Shoulder

(2) The bonding of the machined ceramic to the Ti-Base must be carried out using the Teflon ZC-RLT000 analogue.



## ■ Non-rotational Cr/Co screw-retained overflow ring

Ø implant	Øem (mm)	Product code	Preview
Ø3.5 Ø4.0 Ø5.0	Ø3.5	O-MS301	



**Technical pattern**  
 Øem: Emergence diameter  
 Delivered with a castable sheath Ref. GS930

Screwing  
 30 N.cm  
 Delivered with  
 2 screws Ref. VIM052

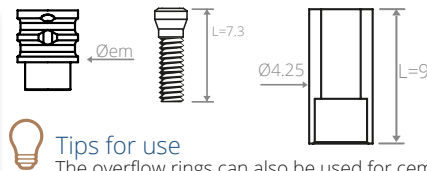
**Indication**



**Tips for use**  
 The overflow rings can also be used for cemented rehabilitation.

## ■ Rotational Cr/Co screw-retained overflow ring

Ø implant	Øem (mm)	Product code	Preview
Ø3.5 Ø4.0 Ø5.0	Ø3.5	O-MSR301	



**Technical pattern**  
 Øem: Emergence diameter  
 Delivered with a castable sheath Ref. GS930

Screwing  
 30 N.cm  
 Delivered with  
 2 screws Ref. VIM052

**Indication**



**Tips for use**  
 The overflow rings can also be used for cemented rehabilitation.

## ■ Protective cap for multi unit abutment

Ø implant	Øem (mm)	Hc (mm)	Product code	Preview
Ø3.5 Z1-infinity	Ø4.25		Z-CP400	
Ø3.5 Z1-Connect Ø4	Ø5	3.5	Z-CP500	
Ø5.0	Ø6		Z-CP600	



**Technical pattern**  
 Øem: Emergence diameter  
 H: height

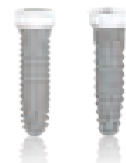
Screwing  
 15 N.cm

**Indication**

**Colour code**

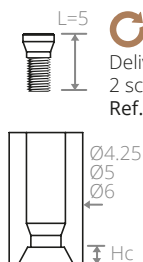
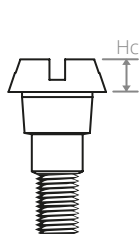
● Ø3.5 Z1-infinity ● Ø3.5 Z1-Connect ● Ø4 ● Ø5

# Z1-infinity Z1-Connect



## Straight Multi-Unit Abutment

Ø implant	Hc (mm)	Product code	Preview
Ø3.5 Z1-infinity	1	ZI-PCS400	
Ø3.5 Z1-Connect Ø4	1	ZC-PCS500	
Ø5.0	1	ZC-PCS600	



Screwing 30 N.cm  
Delivered with 2 screws  
Ref. HO-VIP034

Ref. GP004  
GP005 GP006

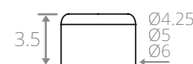
**Technical pattern**  
Øem: Emergence diameter  
Hc: Cone height  
Delivered with a castable sheath Ref. GP004/005/006.

**Indication**

**Tips for use**

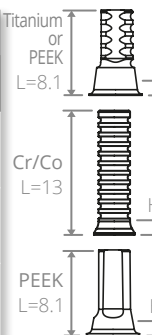
Protective cap:  
Ref. Z-CP400/500/600

Screwing 15 N.cm  
for the multi-unit abutment



## Multi-Unit Abutment Sheath

Ø implant	Hc (mm)	TITANIUM sheath for immediate final prosthesis		PEEK sheath for immediate temporary prosthesis		Cr/Co sheath for screw-retained soldered bar		PEEK Scanbody sheath for multi-unit abutment	
		Product code	Pre-view	Product code	Pre-view	Product code	Pre-view	Product code	Pre-view
Ø3.5 Z1-infinity	1.2	ZC-GCS400		ZM-GPCS400		ZC-GCR400		ZM-GCF400	
Ø3.5 Z1-Connect Ø4		ZC-GCS500		ZC-GPCS500		ZC-GCR500		ZC-GCF500	
Ø5.0		ZC-GCS600		ZC-GPCS600		ZC-GCR500		ZC-GCF600	



**Technical pattern**

Screwing 30 N.cm | Manual screwing Scanbody only

L=4 All sheaths are delivered with 2 screws  
Ref. Z-VPC025

**Indication**

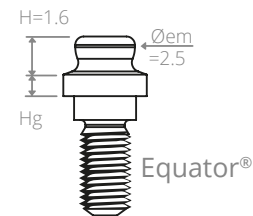
Special CAD / CAM

## Equator® abutment

		Equator® range	
∅ implant	Hg (mm)	Product code	
∅3.5 ∅4 ∅5	1	O-EQU410	
	2	O-EQU420	
	3	O-EQU430	
	4	O-EQU440	
	5	O-EQU450	

### Technical pattern

∅em: Emergence diameter  
Hg: Gingival height



### Indication



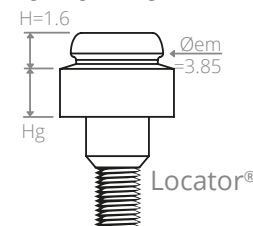
Screwing  
20 N.cm

## Locator® abutment

		Locator® range	
∅ implant	Hg (mm)	Product code	Preview
∅3.5 ∅4 ∅5	1	O-LOC410	
	2	O-LOC420	
	3	O-LOC430	
	4	O-LOC440	
	5	O-LOC450	

### Technical pattern

∅em: Emergence diameter  
Hg: Gingival height



### Indication



Screwing  
20 N.cm



# Z1-infinity Z1-Connect



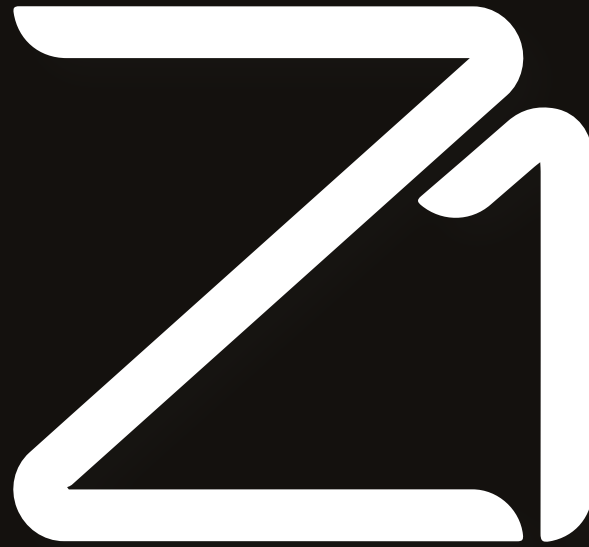
## Equator® abutment accessories

Product name	Strength	Product code	Preview
Smartbox pack: 1 cap + 4 retention joints + 1 protection disc	N/A	EQU_335SBC	
Equator® pack: cap + retentions	N/A	ASCEQU100 (192ECE)	
Temporary nylon retention joint (x4) black	N/A	ASJ EQU100 (140CEN)	
Extra soft RETENTION JOINT (x4) yellow	0.6 kg	ASJ EQU200 (140CEG)	
SOFT Retention joint (x4) pink	1.2 kg	ASJ EQU300 (140CER)	
STANDARD retention joint (x4) clear	1.6 kg	ASJ EQU400 (140CET)	
HIGH Retention joint (x4) violet	2.5 kg	ASJ EQU500 (140CEV)	
Equator® multi-function core tool	N/A	A-CEQU100 (485IC)	
Equator® tip for retention extraction	N/A	A-EEQU100 (491EC)	
Equator® tip for torque wrench	N/A	A-MEQ006	
Equator® tip for contra-angle	N/A	ETE Q600 (760CE)	

## Locator® abutment accessories

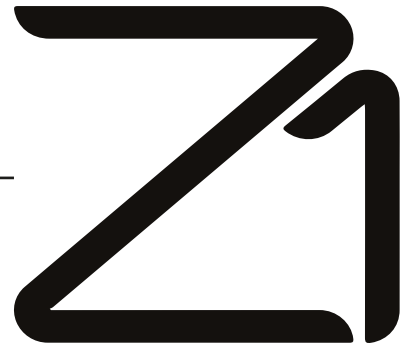
Product name	Strength	Product code	Preview
Locator® pack: cap + retentions + spacer ring	N/A	ASCLOC100 (8519)	
Temporary nylon reten- tion joint (x4) black	N/A	ASJLOC100 (8515)	
LIGHT nylon retention joint (x4) red	40° Div max / 0.45 kg	ASJLOC200 (8548)	
STANDARD nylon reten- tion joint (x4) green	40° Div max / 1.81 kg	ASJLOC300 (8547)	
EXTRA LIGHT nylon retention joint (x4) blue	20° Div max / 0.68 kg	ASJLOC400 (8529)	
LIGHT nylon retention joint (x4) pink	20° Div max / 1.36 kg	ASJLOC500 (8527)	
STANDARD nylon reten- tion joint (x4) clear	20° Div Max / 2.27 kg	ASJLOC600 (8524)	
Locator® core tool multi-function 3 in 1	N/A	A-CLOC100 (8393)	
Locator® tip for torque wrench	N/A	A-ECDL100	
Locator® screw tool	N/A	A-MEL100	
Locator® angle measurement gauge	N/A	A-GALOC100 (9530)	
Locator® parallel post for divergence measurement	N/A	A-PALOC100 (8517)	





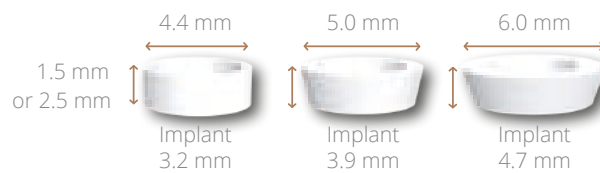
Implant systems with  
**M Connection**  
Morse taper &  
hexagonal indexing





### ZIRCONIA TRANSGINGIVAL COLLAR

- Anti-bacterial shield
- Enhanced cell adhesion and proliferation
- Gingival creeping attachment and natural restructuring of the papillae
- Better aesthetic management of the gingival tissue



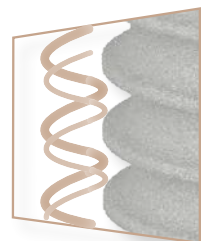
### SWISSCLIP TECHNOLOGY

- Clipping system between the implant and the screw tools for contra-angle or for torque wrench
- Gripping and direct positioning of the implant without digital contact
- Real time-saving and high accuracy
- Available for direct technique transfers and for the angulation kit



### ASYNCHRONOUS DUAL SCREW THREAD

- Self-tapping rounded macrothreads
- Prevention of cortical bone compression phenomena
- Optimal primary stability



### MATERIALS

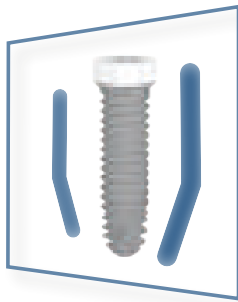
- **Zirconia Y-TZP:** Ytria Tetragonal Zirconia Polycrystal Y-TZP zirconia meets the requirements of ISO 13356 and the American Society for Testing and Materials (ASTM F 1873)
- **Grade 4 Titanium:** T60 commercially pure Grade 4 T60 commercially pure titanium meets the requirements of ISO 5832-2 and the American Society for Testing and Materials (ASTM F67 3.7065)





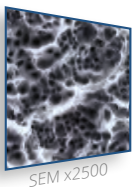
## 1 STAGE IMPLANTS - SOFT TISSUE LEVEL

The Zirconia Y-TZP collar technology has proven to be a real aesthetic anti-bacterial shield.

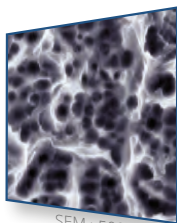


### CC BIOSHAPE

- Conical cruciform apex with a wide thread diameter
- Cylindrical body to maintain close bone contact
- Optimal primary stability and insertion safety



SEM x2500



SEM x5000

### SURFACE TREATMENT

The implants incorporate a **sandblasting and hydrofluoric acid-etching** surface treatment that promotes the osseointegration process.



### ATRAUMATIC APEX

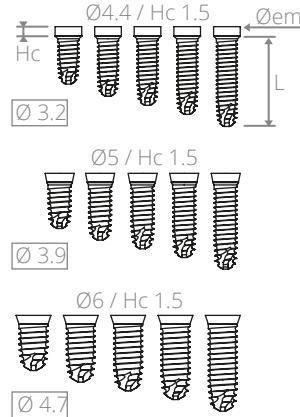
- Apex with atraumatic convexity
- Ideal for sinus lifts
- Self-tapping claw



# IMPLANT SURGERY & MANAGEMENT OF GINGIVAL TISSUES

## Dental implant range M - Family: Z1-M

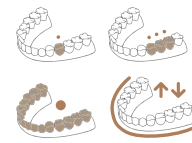
Z1-M with Zirconia collar height 1.5 mm				
Diameter (mm) \ Length (mm)	Implant Ø3.2 mm	Implant Ø3.9 mm	Implant Ø4.7 mm	Aperçu
8 mm	ZM308	ZM408	ZM508	
10 mm	ZM310	ZM410	ZM510	
11.5 mm	ZM311	ZM411	ZM511	
13 mm	ZM313	ZM413	ZM513	
15 mm	ZM315	ZM415	ZM515	



**Technical pattern**  
 Øem: Emergence diameter Setting 45 N.cm  
 Hc: Zirconia collar height  
 L: Length

Delivered with a cover screw

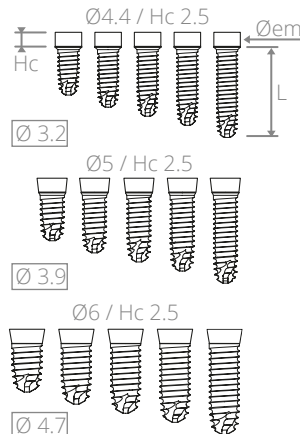
### Indication



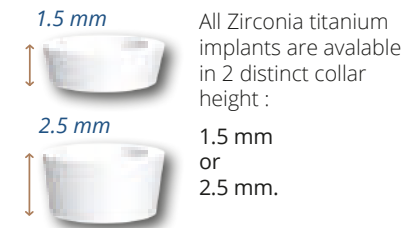
### Colour code

● Ø3.2 ● Ø3.9 ● Ø4.7

Z1-M with Zirconia collar height 2.5 mm				
Diameter (mm) \ Length (mm)	Implant Ø3.2 mm	Implant Ø3.9 mm	Implant Ø4.7 mm	Aperçu
8 mm	ZHM308	ZHM408	ZHM508	
10 mm	ZHM310	ZHM410	ZHM510	
11.5 mm	ZHM311	ZHM411	ZHM511	
13 mm	ZHM313	ZHM413	ZHM513	
15 mm	ZHM315	ZHM415	ZHM515	



### New Zirconia collar height



## Management of gingival tissues using Zirconia technology

Ø implant	Øem (mm)	Hg (mm)	Preview		
Ø3.2	Ø4.4	1.5	4.4 mm	5.0 mm	6.0 mm
			Implant 3.2 mm	Implant 3.9 mm	Implant 4.7 mm
			1.5 mm		
Ø3.9	Ø5	2.5	4.4 mm	5.0 mm	6.0 mm
			Implant 3.2 mm	Implant 3.9 mm	Implant 4.7 mm
			2.5 mm		
Ø4.7	Ø6				

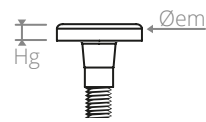


### Benefits of Zirconia technology

- Immediate aesthetic result
- Surgical phases in one surgical stage
- Simplification of the impression phase
- Simplification of the suture phase
- Simplification of the healing phase
- Anti-bacterial shield

■ Cover screw

Ø implant	Øem (mm)	Hg (mm)	Product code	Preview
Ø3.2	Ø4.4	1.1	ZM-VIO400	
Ø3.9	Ø5		ZM-VIO500	
Ø4.7	Ø6		ZM-VIO600	




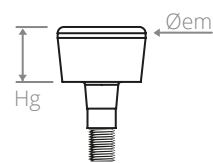
Technical pattern  
 Øem: Emergence diameter  
 Hg: Gingival height



Colour code  
 ● Ø3.2 ● Ø3.9 ● Ø4.7

■ Optional healing screw

Ø implant	Øem (mm)	Hg (mm)	Product code	Preview
Ø3.2	Ø5	3.5	ZM-VT430	
Ø3.9	Ø5.6		ZM-VT530	
Ø4.7	Ø6.6		ZM-VT630	



Technical pattern  
 Øem: Emergence diameter  
 Hg: Gingival height



Colour code  
 ● Ø3.2 ● Ø3.9 ● Ø4.7



Tips for use

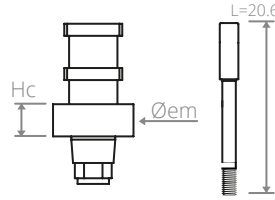
When a soft tissue level implant is used, the healing screw is useful in the case of a thick gum.



# COMPONENTS FOR THE IMPRESSION TAKING AND MASTER CAST-MAKE

## ■ Impression Transfer - Direct Technique "Pick-up"

Ø implant	Øem (mm)	Hc (mm)	Product code	Preview
Ø3.2	Ø4.4	2	ZM-TD400	
Ø3.9	Ø5		ZM-TD500	
Ø4.7	Ø6		ZM-TD600	



### Technical pattern

Hc: Cylindrical height  
Øem: Emergence diameter

Manual screwing  
Delivered with one screw Ref. VTD186

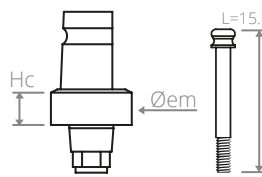
### Indication



Colour code ● Ø3.2 ● Ø3.9 ● Ø4.7

## ■ Impression Transfer - Indirect Technique "Pop-in"

Ø implant	Øem (mm)	Hc (mm)	Product code	Preview
Ø3.2	Ø4.4	2	ZM-TI400	
Ø3.9	Ø5		ZM-TI500	
Ø4.7	Ø6		ZM-TI600	



### Technical pattern

Hc: Cylindrical height  
Øem: Emergence diameter

Manual screwing  
Delivered with one screw Ref. VTI157

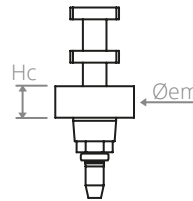
### Indication



Colour code ● Ø3.2 ● Ø3.9 ● Ø4.7

## ■ Impression Transfer - Direct Technique "SwissClip"

Ø implant	Øem (mm)	Hc (mm)	Product code	Preview
Ø3.2	Ø4.4	2	ZM-TDC400	
Ø3.9	Ø5		ZM-TDC500	
Ø4.7	Ø6		ZM-TDC600	



### Technical pattern

Hc: Cylindrical height  
Øem: Emergence diameter

### Indication

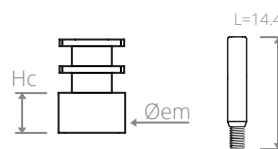


Colour code ● Ø3.2 ● Ø3.9 ● Ø4.7

Tips for use Optimal use when the implant axis is straight.

## ■ Impression Transfer - Direct Technique for Multi-Unit Abutment

Ø implant	Øem (mm)	Hc (mm)	Product code	Preview
Ø3.2	Ø4.25	3	ZM-TDP400	
Ø3.9	Ø5		ZC-TDP500	
Ø4.7	Ø6		ZC-TDP600	

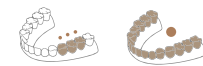


### Technical pattern

Hc: Cylindrical height  
Øem: Emergence diameter

Manual screwing  
Delivered with one screw Ref. VTD098

### Indication



Colour code ● Ø3.2 ● Ø3.9 ● Ø4.7

## ■ Impression Transfer - Indirect Technique for Multi-Unit Abutment

Ø implant	Øem (mm)	Hc (mm)	Product code	Preview
Ø3.2	Ø4.25	3	ZM-TIP400	
Ø3.9	Ø5		ZC-TIP500	
Ø4.7	Ø6		ZC-TIP600	

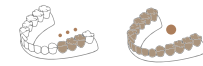


### Technical pattern

Hc: Cylindrical height  
Øem: Emergence diameter

Manual screwing  
Delivered with one screw Ref. VTI088

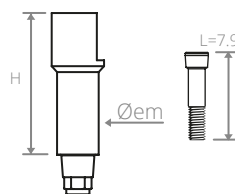
### Indication



Colour code ● Ø3.2 ● Ø3.9 ● Ø4.7

## ■ Scanbody - Digital transfer

Ø implant	Øem (mm)	H (mm)	Product code	Preview
Ø3.2	Ø3.5	12	ZM-SCN000	
Ø3.9		7	ZM-SCN007	
Ø4.7				



### Technical pattern

H: PEEK part height  
Øem: Emergence diameter

Manual screwing  
Delivered with one screw Ref. VIM064

### Special CAD / CAM

### Indication




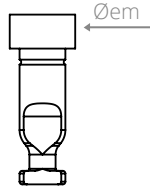
Tips for use

For multi-unit abutment restorations, use the PEEK scanbodies sheaths provided for this purpose (P37).



■ Implant analogue

Ø implant	Øem (mm)	Product code	Preview
Ø3.2	Ø4.4	ZM-RU400	
Ø3.9	Ø5	ZM-RU500	
Ø4.7	Ø6	ZM-RU600	



Technical pattern

Ø implant: Implant platform diameter




Indication

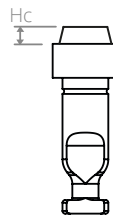


Colour code

● Ø3.2 ● Ø3.9 ● Ø4.7

■ Multi-unit abutment analogue

Ø implant	Hc	Product code	Preview
Ø3.2	1	ZM-HPU400	
Ø3.9		ZC-HPU500	
Ø4.7		ZC-HPU600	



Technical pattern

Ø implant: Implant platform diameter

Hc: Cone height (replica of the multi-unit abutment)


Indication




Colour code

● Ø3.2 ● Ø3.9 ● Ø4.7


■ Equator® abutment analogue

Ø implant	Product code	Preview
Ø3.2 Ø3.9 Ø4.7	HEQU000 (144AE)	

■ Equator® abutment transfer

Ø implant	Product code	Preview
Ø3.2 Ø3.9 Ø4.7	TEQU200 (x2) (044CAIN)	

■ Locator® abutment analogue

Ø implant	Product code	Preview
Ø3.2 Ø3.9	HLOC400 (8530)	
Ø4.7	HLOC500 (8516)	

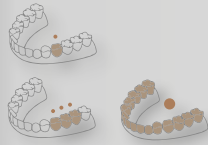
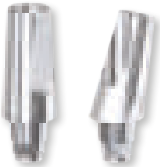
■ Locator® abutment transfer

Ø implant	Product code	Preview
Ø3.2 Ø3.9 Ø4.7	TDLOC100 (8505)	

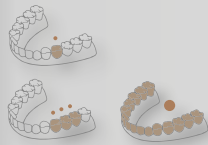
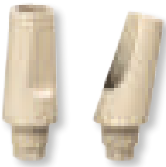
# Standard prosthetic solutions

## Cemented prosthesis

Titanium final abutment



PEEK temporary abutment



Non-rotational overflow ring + Castable sheath



## Screw-retained prosthesis

Non-rotational overflow ring + Castable sheath



Straight or angulated multi-unit abutment + Castable sheath



## Secondary elements

PEEK sheath for immediate temporary prosthesis



Titanium sheath for immediate final prosthesis



Cr/Co sheath for soldered bar



# Customised prosthetic solutions

Additional parts for CAD / CAM use

Ti-base compatible CEREC®



Ti-Base indexée

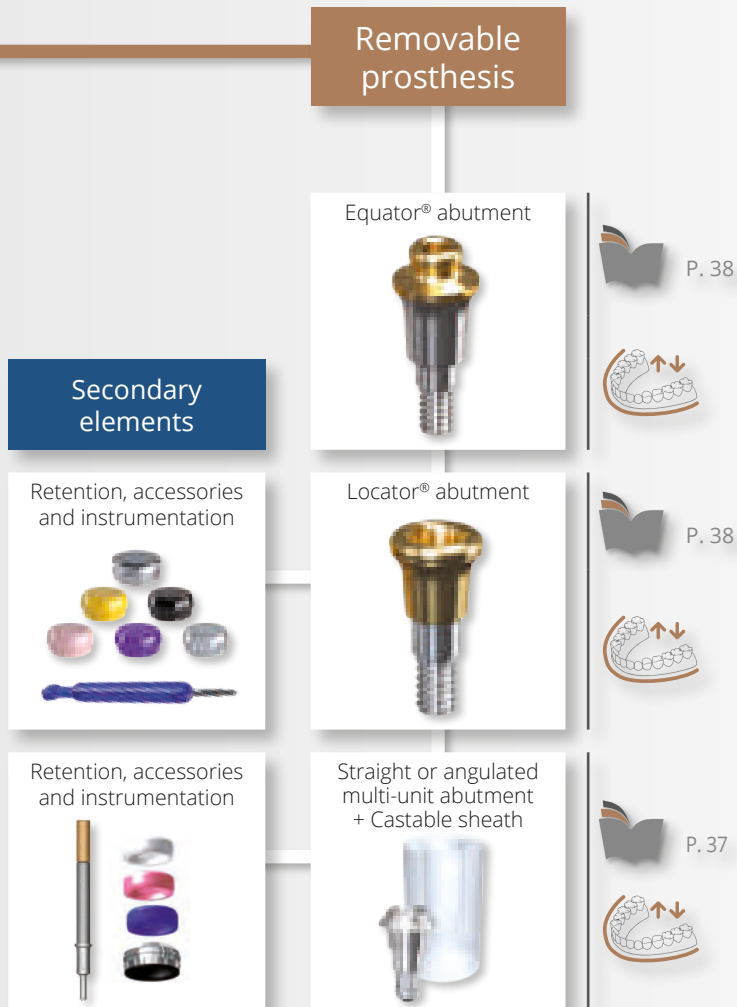


Ti-Base non indexée





# GENERAL PROSTHETIC SYNOPSIS



## Caption and comments



SINGLE-UNIT FIXED RESTORATION



FULL-ARCH FIXED RESTORATION



1 STAGE IMPLANT SOFT TISSUE LEVEL



COMPONENT THAT CAN BE USED BY YOUR CAD / CAM SYSTEM



MULTIPLE-UNIT FIXED RESTORATION



REMOVABLE RESTORATION



REFER TO THE SPECIFIED PAGES



RECOMMENDED TIGHTENING TORQUE



The final prosthetic components are gradually being delivered with 2 screws:  
- 1 laboratory screw,  
- 1 final screw.

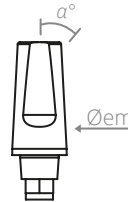




# FIXED CEMENTED PROSTHESIS SOLUTIONS

## Titanium final abutment

Ø implant	Øem (mm)	α°	Product code	Preview
Ø3.2 Ø3.9 Ø4.7	Ø4	0°	ZM-MT000	
		15°	ZM-MT001	
		25°	ZM-MT002	



### Technical pattern

Øem: Emergence diameter  
α°: Angulation

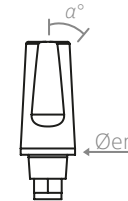
Screwing 30 N.cm  
Delivered with 2 screws  
Ref. VIM064

### Indication



## PEEK temporary abutment

Ø implant	Øem (mm)	α°	Product code	Preview
Ø3.2 Ø3.9 Ø4.7	Ø4	0°	ZM-MP000	
		15°	ZM-MP001	



### Technical pattern

Øem: Emergence diameter  
α°: Angulation

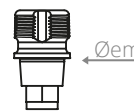
Screwing 30 N.cm  
Delivered with one screw  
Ref. VIM064

### Indication



## Ti-base / Base de connexion indexée

Ø implant	Øem (mm)	H (mm)	Product code	Preview
Ø3.2 Ø3.9 Ø4.7	Ø3.5	0	ZM-BAS000	



### Technical pattern

H: Height  
Øem: Emergence diameter

Screwing 30 N.cm  
Delivered with 2 screws  
Ref. VIM064

Special CAD / CAM

### Indication

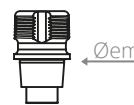


### Tips for use

For a better aesthetic result, in the case of a Z1 implant, the crown must cover the Ti-base and come to rest directly on the zirconia platform of the implant. The bonding must be done in the mouth and not in the laboratory. A Teflon rod is provided for this purpose to seal the ti-base during the polymerization of the resin.

## Ti-base / Base de connexion non indexée

Ø implant	Øem (mm)	H (mm)	Product code	Preview
Ø3.2 Ø3.9 Ø4.7	Ø3.5	0	ZM-BASR000	



### Technical pattern

H: Height  
Øem: Emergence diameter

Screwing 30 N.cm  
Delivered with 2 screws  
Ref. VIM064

Special CAD / CAM

### Indication

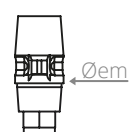


### Tips for use

For a better aesthetic result, in the case of a Z1 implant, the crown must cover the Ti-base and come to rest directly on the zirconia platform of the implant. The bonding must be done in the mouth and not in the laboratory. A Teflon rod is provided for this purpose to seal the ti-base during the polymerization of the resin.

## CEREC®-compatible Ti-base

Ø implant	H (mm)	Bloc L	Ø Éplt* L	Preview
	0			
Ø3.2 Ø3.9 Ø4.7	ZM-TBS000	AT OS 3.5/4.0	Ø4.4	 Emergence Ø3.4 mm
		AT OS 4.5/5.0	Ø5.0	
		B O 5.0	Ø6.0	



### Technical pattern

H: Height  
Øem: Emergence diameter

Screwing 30 N.cm  
Delivered with 2 screws  
Ref. VIM064

Special CAD / CAM

### Indication



### Tips for use

The CEREC®-compatible Ti-bases are used with SIRONA® scanbodies:



Product code for **Omnicam**  
**6431311** block S  
**6431329** block L



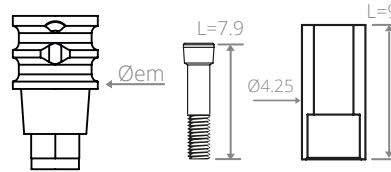
Product code for **Bluecam**  
**6431295** block S  
**6431303** block L

# FIXED SCREW-RETAINED PROSTHESIS SOLUTIONS



## ■ Non-rotational Cr/Co screw-retained overflow ring

Ø implant	Øem (mm)	Product code	Preview
Ø3.2 Ø3.9 Ø4.7	Ø3.5	ZM-MS400	



### Technical pattern

Øem: Emergence diameter  
Delivered with a castable sheath Ref. GS930

Screwing 30 N.cm  
Delivered with 2 screws  
Ref. VIM064

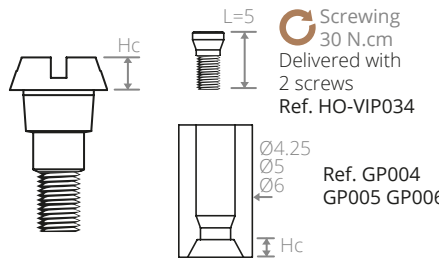
### Indication

Tips for use

The overflow rings can also be used for cemented rehabilitation.

## ■ Straight Multi-Unit Abutment

Ø implant	Hc (mm)	Product code	Preview
Ø3.2	1	ZM-PCS400	
Ø3.9		ZM-PCS500	
Ø4.7		ZM-PCS600	



### Technical pattern

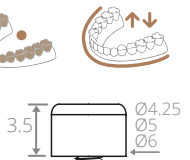
Øem: Emergence diameter  
Hc: Cone height  
Delivered with a castable sheath Ref. GP004/005/006.

Screwing 15 N.cm  
for the multi-unit abutment

### Indication

Tips for use

Protective cap:  
Ref. Z-CP400/500/600



## ■ Protective cap for multi unit abutment

Ø implant	Øem (mm)	Hc (mm)	Product code	Preview
Ø3.2	Ø4.25	3.5	Z-CP400	
Ø3.9	Ø5		Z-CP500	
Ø4.7	Ø6		Z-CP600	



### Technical pattern

Øem: Emergence diameter  
H: height

Screwing 15 N.cm

### Indication

### Colour code

● Ø3.2 ● Ø3.9 ● Ø4.7

## ■ Multi-Unit Abutment Sheath

Ø implant	Hc (mm)	TITANIUM sheath for immediate final prosthesis		PEEK sheath for immediate temporary prosthesis		Cr/Co sheath for screw-retained soldered bar		PEEK Scanbody sheath for multi-unit abutment	
		Product code	Pre-view	Product code	Pre-view	Product code	Pre-view	Product code	Pre-view
Ø3.2	1.2	ZC-GCS400		ZM-GPCS400		ZC-GCR400		ZM-GCF400	
Ø3.9		ZC-GCS500		ZC-GPCS500		ZC-GCR500		ZC-GCF500	
Ø4.7		ZC-GCS600		ZC-GPCS600		ZC-GCR500		ZC-GCF600	

**Technical pattern**

Screwing 30 N.cm | Manual screwing Scanbody only

L=8.1 Titanium or PEEK

L=4 All sheaths are delivered with 2 screws  
Ref. Z-VPC025

L=13 Cr/Co

L=8.1 PEEK

Special CAD / CAM



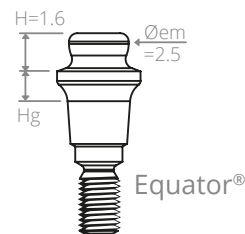
# STABILISATION OF REMOVABLE PROSTHESIS SOLUTIONS

## Equator® abutment

		Equator® range	
∅ implant	Hg (mm)	Product code	Preview
∅3.2 ∅3.9 ∅4.7	1	M-EQU410	
	2	M-EQU420	
	3	M-EQU430	
	4	M-EQU440	
	5	M-EQU450	


### Technical pattern

∅em: Emergence diameter  
Hg: Gingival height



### Indication



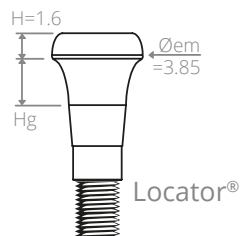
 Screwing  
20 N.cm

## Locator® abutment

		Locator® range	
∅ implant	Hg (mm)	Product code	Preview
∅3.2 ∅3.9 ∅4.7	1	M-LOC410	
	2	M-LOC420	
	3	M-LOC430	
	4	M-LOC440	
	5	M-LOC450	


### Technical pattern

∅em: Emergence diameter  
Hg: Gingival height



### Indication



 Screwing  
20 N.cm

■ Equator® abutment accessories

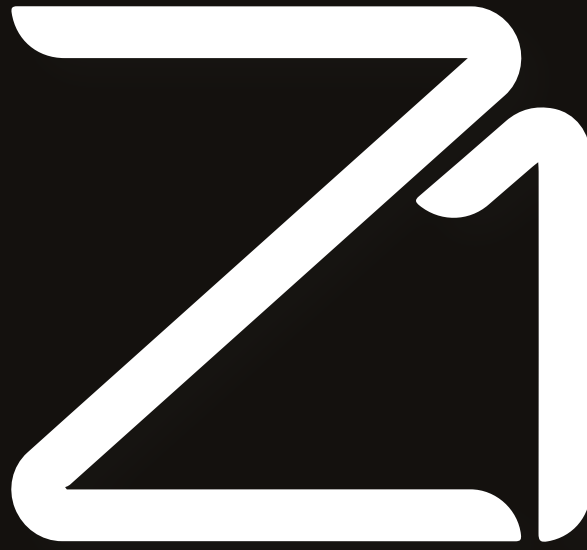
Product name	Strength	Product code	Preview
Smartbox pack: 1 cap + 4 retention joints + 1 protection disc	N/A	EQU_335SBC	
Equator® pack: cap + retentions	N/A	ASCEQU100 (192ECE)	
Temporary nylon retention joint (x4) black	N/A	ASJEQU100 (140CEN)	
Extra soft RETENTION JOINT (x4) yellow	0.6 kg	ASJEQU200 (140CEG)	
SOFT Retention joint (x4) pink	1.2 kg	ASJEQU300 (140CER)	
STANDARD retention joint (x4) clear	1.6 kg	ASJEQU400 (140CET)	
HIGH Retention joint (x4) violet	2.5 kg	ASJEQU500 (140CEV)	
Equator® multi-function core tool	N/A	A-CEQU100 (485IC)	
Equator® tip for retention extraction	N/A	A-EEQU100 (491EC)	
Equator® tip for torque wrench	N/A	A-MEQ006	
Equator® tip for contra-angle	N/A	ETEQ600 (760CE)	

■ Locator® abutment accessories

Product name	Strength	Product code	Preview
Locator® pack: cap + retentions + spacer ring	N/A	ASCLOC100 (8519)	
Temporary nylon reten- tion joint (x4) black	N/A	ASJLOC100 (8515)	
LIGHT nylon retention joint (x4) red	40° Div max / 0.45 kg	ASJLOC200 (8548)	
STANDARD nylon reten- tion joint (x4) green	40° Div max / 1.81 kg	ASJLOC300 (8547)	
EXTRA LIGHT nylon reten- tion joint (x4) blue	20° Div max / 0.68 kg	ASJLOC400 (8529)	
LIGHT nylon retention joint (x4) pink	20° Div max / 1.36 kg	ASJLOC500 (8527)	
STANDARD nylon reten- tion joint (x4) clear	20° Div Max / 2.27 kg	ASJLOC600 (8524)	
Locator® core tool multi-function 3 in 1	N/A	A-CLOC100 (8393)	
Locator® tip for torque wrench	N/A	A-ECDL100	
Locator® screw tool	N/A	A-MEL100	
Locator® angle measurement gauge	N/A	A-GALOC100 (9530)	
Locator® parallel post for divergence measurement	N/A	A-PALOC100 (8517)	







# Instrumentation & Accessories

8 Connection / M Connection





# INSTRUMENTATION & ACCESSORIES



## Surgical kit

All the essential elements for your implant surgery practice are gathered in the surgical kit depending on the system you have chosen: M, 8 or infinity.

### Ergonomic

A compact and complete kit design.

### Easy-to-use

Components available in different sizes to suit all clinical cases.

### Safety

Easy to clean and steam sterilisable.



- 2 Pointer drill
- 3 Stop drill No. 1  
Choose drill depending on implant length
- 4 Drill No. 2 intermediate
- 5 Drilling sequence according to the diameter of the implant to be fitted
- 6 Screw taps

7 Short and long screw tools for torque wrench

8 Short and long screw tools for contra-angle

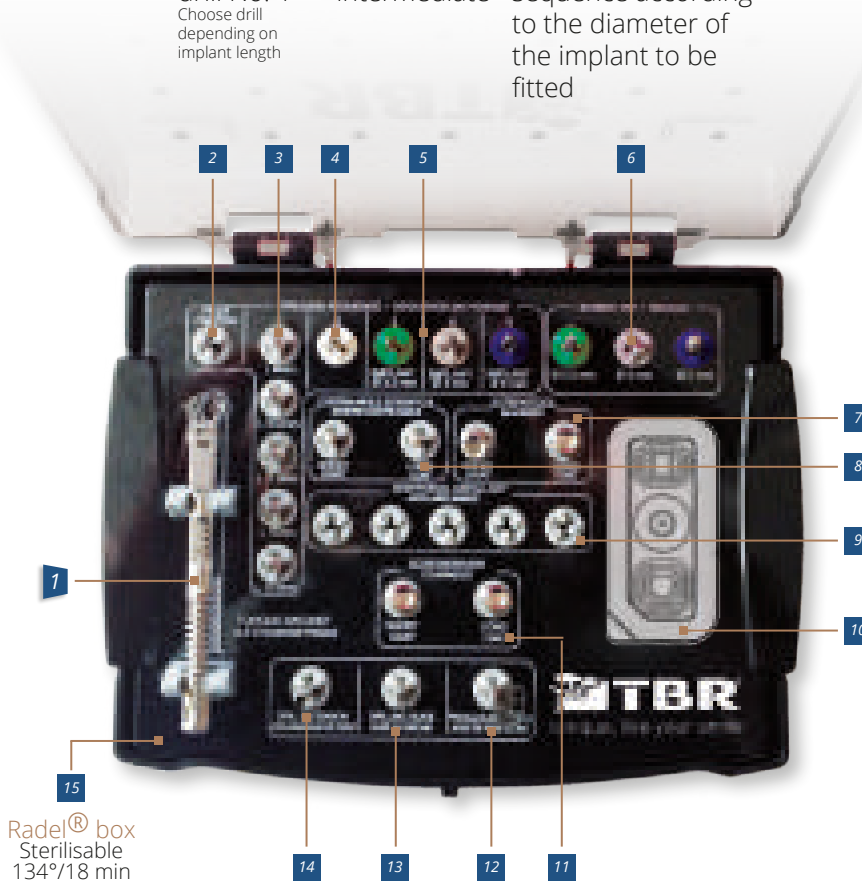
9 Empty spaces for additional ancillary parts

10 Location to stabilise the internal blister

11 Short and long hexagonal screwdrivers

7 Torque wrench

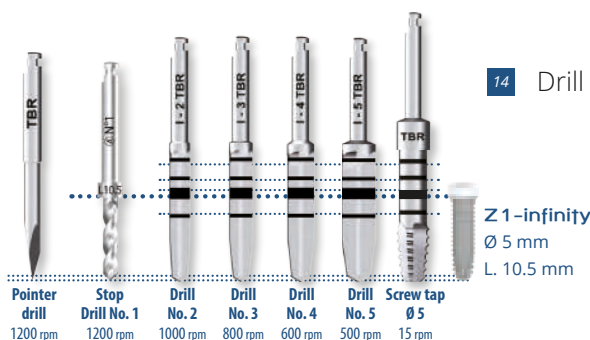
Lightbulb icon: Dual function



15 Radel® box  
Sterilisable  
134°/18 min

Lightbulb icon: Tips for use

The TBR implants are inserted following a unique and simple drilling protocol, see example opposite.



M Ref. A-TCP008 - M implants

8 Ref. A-TCP006 - 8 implants

8 Ref. A-TCP009 - infinity implants



# Removable stop drill kit

In addition to your surgical kit for implants with octagonal or Morse taper connections, you now have a box with 4 drills and 20 removable stops.

## Reliable drilling sequence

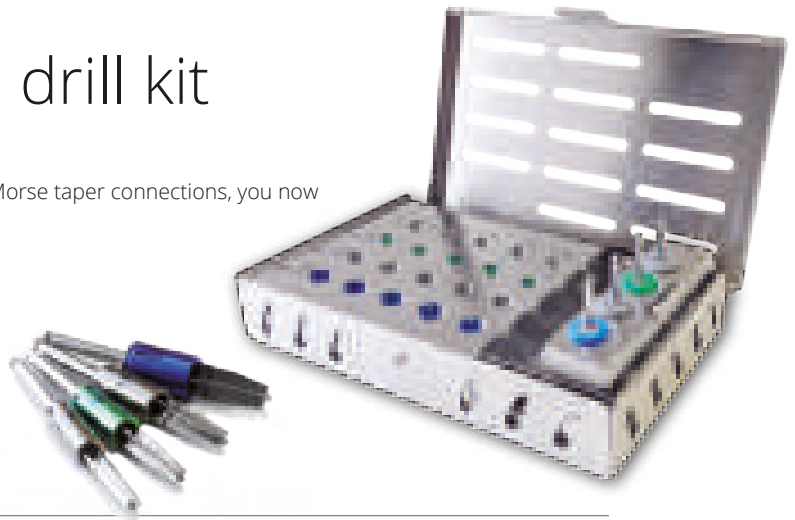
The stop prevents the drill from reaching the wrong depth.

## Friction retention system

The specific drills fit the stops simply by clipping.

## Safety

Easy to clean and steam sterilisable.



1 Laser marking of the implant range

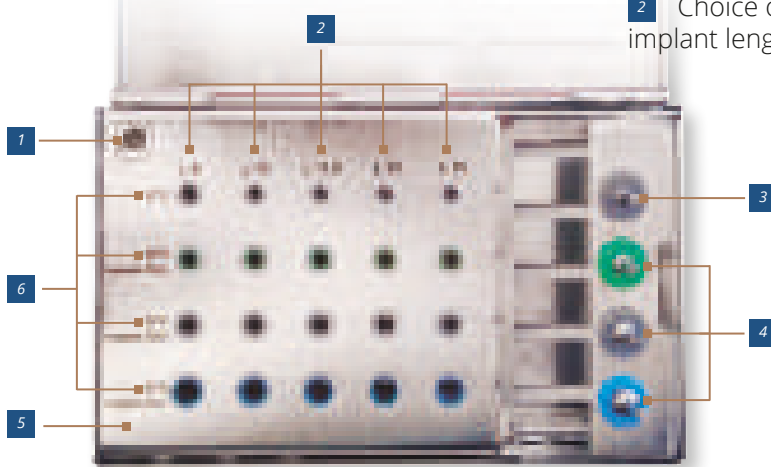
2 Choice of implant length

3 Drill No. 2 intermediate

6 Sequence of removable stops to use

4 Drilling sequence according to the diameter of the implant to be fitted

5 Surgical stainless steel box  
Sterilisable  
134°/18 min



Ref. A-TF004  
M implants

Ref. A-TF003  
8 implants

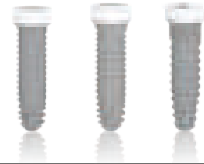
Ref. A-TF005  
infinity implants

## Refill for removable stop drill kit

Product name	Kit	Kit	Kit	Product code	Preview
Removable stop drill No. 2 - M	✓			A-FMB200	
Removable stop drill No. 3 - M	✓			A-FMB300	
Removable stop drill No. 4 - M	✓			A-FMB400	
Removable stop drill No. 5 - M	✓			A-FMB500	
Removable stop drill No. 2 - 8		✓		A-FCB200	
Removable stop drill No. 3 - 8		✓		A-FCB300	
Removable stop drill No. 4 - 8		✓		A-FCB400	
Removable stop drill No. 5 - 8		✓		A-FCB500	
Removable stop drill No. 2 - infinity			✓	A-FIB200	
Removable stop drill No. 3 - infinity			✓	A-FIB300	
Removable stop drill No. 4 - infinity			✓	A-FIB400	
Removable stop drill No. 5 - infinity			✓	A-FIB500	
Pack of removable stops for drill No. 2 - 8		✓	✓	A-PCB200	
Pack of removable stops for drill No. 3 - 8		✓	✓	A-PCB300	
Pack of removable stops for drill No. 4 - 8		✓	✓	A-PCB400	
Pack of removable stops for drill No. 5 - 8		✓	✓	A-PCB500	
Pack of removable stops for drill No. 2 - M	✓			A-PMB200	
Pack of removable stops for drill No. 3 - M	✓			A-PMB300	
Pack of removable stops for drill No. 4 - M	✓			A-PMB400	
Pack of removable stops for drill No. 5 - M	✓			A-PMB500	

■ Surgical instrumentation

Product name	Kit M	Kit 8	Kit infinity	Product code	Preview
Complete surgical kit - M range	✓			A-TCP008	
Radel surgical box - M range	✓			A-COF006	
Complete surgical kit - 8 range		✓		A-TCP006	
Radel surgical box - 8 range		✓		A-COF004-8	
Complete surgical kit - Infinity range			✓	A-TCP009	
Radel surgical box - Infinity range			✓	A-COF004-I	
Pointer drill with external irrigation L = 4 mm	✓	✓	✓	A-FPT310	
Stop drill No. 1 with external irrigation Range 8 & M - L = 8 mm	✓	✓	✓	A-FBX080	
Stop drill No. 1 with external irrigation Range M - L = 10 mm	✓			A-FBX100	
Stop drill No. 1 with external irrigation Range 8 - L = 10.5 mm		✓	✓	A-FBX105	
Stop drill No. 1 with external irrigation Range 8 & M - L = 11.5 mm	✓	✓	✓	A-FBX115	
Stop drill No. 1 with external irrigation Range 8 & M - L = 13 mm	✓	✓	✓	A-FBX130	
Stop drill No. 1 with external irrigation Range M - L = 15 mm	✓			A-FBX150	
Stop drill No. 1 with external irrigation Range 8 - L = 15.5 mm		✓	✓	A-FBX155	
Conical drill No. 2 with external irrigation Range 8 Point = 0.6 mm		✓		A-FCX200	
Conical drill No. 3 with external irrigation Range 8 Point = 0.6 mm		✓		A-FCX300	
Conical drill No. 4 with external irrigation Range 8 Point = 0.7 mm		✓		A-FCX400	
Conical drill No. 5 with external irrigation Range 8 Point = 0.9 mm		✓		A-FCX500	
Conical drill No. 2 with external irrigation Infinity Range Point = 0.6 mm			✓	A-FIX200	
Conical drill No. 3 with external irrigation Infinity Range Point = 0.6 mm			✓	A-FIX300	
Conical drill No. 4 with external irrigation Infinity Range Point = 0.7 mm			✓	A-FIX400	
Conical drill No. 5 with external irrigation Infinity Range Point = 0.9 mm			✓	A-FIX500	
Conical drill No. 2 with external irrigation M Range Point = 0.6 mm	✓			A-FMX200	
Conical drill No. 3 with external irrigation M Range Point = 0.6 mm	✓			A-FMX300	
Conical drill No. 4 with external irrigation M Range Point = 0.7 mm	✓			A-FMX400	
Conical drill No. 5 with external irrigation M Range Point = 0.9 mm	✓			A-FMX500	
Contra-angle screw tap 8 range Ø3.5		✓		A-TAR306	
Contra-angle screw tap 8 range Ø4		✓		A-TAR406	
Contra-angle screw tap 8 range		✓		A-TAR506	
SwissClip screw tap M range Ø3.2	✓			A-TAR303	
SwissClip screw tap M range Ø3.9	✓			A-TAR403	
SwissClip screw tap M range Ø4.7	✓			A-TAR503	
Contra-angle screw tap M range Ø3.2				A-TAR304	
Contra-angle screw tap M range Ø3.9				A-TAR404	
Contra-angle screw tap M range Ø4.7				A-TAR504	



■ Surgical instrumentation

Product name	Kit M	Kit 8	Kit infinity	Product code	Preview
Contra-angle screw tap range 8 & infinity Ø3.5			✓	A-TAR305	
Contra-angle screw tap range 8 & infinity Ø4			✓	A-TAR405	
Contra-angle screw tap range 8 & infinity Ø5			✓	A-TAR505	
Torque wrench	✓	✓	✓	A-CD045	
Square head adaptor for torque wrench				A-MCE070	
SwissClip short screw tool for contra-angle - M Range	✓			A-MCA222	
SwissClip long screw tool for contra-angle - M Range	✓			A-MCA322	
SwissClip short screw tool for ratchet wrench - M Range	✓			A-MCC159	
SwissClip long screw tool for ratchet wrench - M Range	✓			A-MCC254	
SwissClip short screw tool/screwdriver for contra-angle - 8 range		✓	✓	A-MCA230	
SwissClip long screw tool/screwdriver for contra-angle - 8 range		✓	✓	A-MCA325	
SwissClip short screw tool/screwdriver for ratchet wrench - 8 range		✓	✓	A-MCC163	
SwissClip long screw tool/screwdriver for ratchet wrench - 8 range		✓	✓	A-MCC258	
Drill extension	✓	✓	✓	A-PF661	
Drilling guide	✓	✓	✓	A-PER210	
Parallelism gauge	✓	✓	✓	A-JAU355	
Short hexagonal screwdriver - L = 10.5 mm	✓			A-CHC216	
Medium hexagonal screwdriver - L = 14.75 mm				A-CHM265	
Long hexagonal screwdriver - L = 19 mm	✓			A-CHL301	
Countersink for Ø3.5 / Ø3.2 implants				A-ALE300	
Countersink for Ø4 / Ø3.9 implants				A-ALE400	
Countersink for Ø5 / Ø4.7 implants				A-ALE500	
Circular surgical knife for Ø3.5 / Ø3.2 implants				A-BC350	
Circular surgical knife for Ø4 / Ø3.9 implants				A-BC400	
Circular surgical knife for Ø5 / Ø4.7 implants				A-BC500	
Circular surgical knife for Ø4.4 1 stage implants				A-BC450	
Circular surgical knife for Ø6 1 stage implants				A-BC600	
Trephine Ø inner = 2.5 mm - Ø outer 3.5 mm				A-TRE250	
Trephine Ø inner = 3.7 mm - Ø outer 4.7 mm				A-TRE370	
Trephine Ø inner = 4.2 mm - Ø outer 5.2 mm				A-TRE420	
Trephine Ø inner = 5.2 mm - Ø outer 6.2 mm				A-TRE520	
SwissClip ring - 8 range (x6)				A-MBP006	
SwissClip ring - M range (x6)				A-MBP007	
SwissClip ring - Infinity range (x6)				A-MBP008	
X-ray template for implants				A-TS600	



## Prosthetic kit

All the essential elements for your practice of implant-supported prosthesis are gathered in the M prosthetic kit.

### Ergonomic

New design for a compact and complete kit.

### Easy-to-use

Components available in different sizes to suit all clinical cases.

### Safety

Easy to clean and steam sterilisable.



Hexagonal point

**2** Short manual screwdriver

**3** Long manual screwdriver

**4** Short tip for contra-angle

**5** Long tip for contra-angle



Cruciform point

**6** Short screw tool for multi-unit abutment

**7** Long screw tool for multi-unit abutment

**1** Torque wrench

Dual function



Ratchet wrench position (symbol ∞)



Torque wrench position (10 to 45 N.cm)



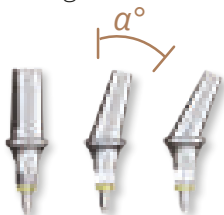
**8** Torque wrench adaptor (can be connected with square head tips)

**9** Short tip for torque wrench

**10** Long tip for torque wrench

Radel® box  
Sterilisable  
134°/18 min

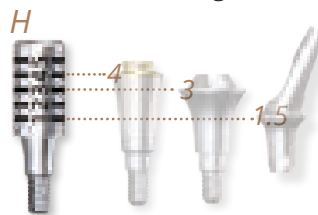
**14** Angulation kit



Tips for use

The angulation kit makes it easy to select the appropriate angulation for the clinical case requiring treatment.

**13** Shoulder height selector



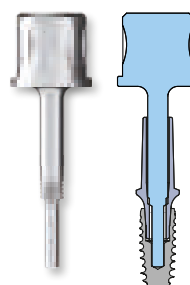
Tips for use

The shoulder height selector measures the available gingiva.

**M** For M abutment:

**11** Short abutment extractor  
For M abutment with shoulder < or = 0.7 mm

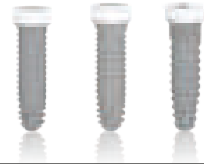
**12** Long abutment extractor  
For Z1-M and M abutment with shoulder > or = 1.5 mm



Maintenance

The abutment extractors are needed to disable the Morse taper between implant and prosthetic abutment.

# Z1-M Z1-infinity Z1-Connect



## Main screws sold per unit and tightening torque

Product name	Range	Product code	Preview
Screw extraction kit Range 8 4 elements	M	A-KEV600	
	8	A-KEV800	

Product name	Range	Tightening torque	Product code	Preview
20°/30° Multi-unit abutment main screw	M 8	30 N.cm	VIM045	
20°/30° Multi-unit abutment secondary screw	M 8	30 N.cm	VIMC045	
Standard abutment screw	8	30 N.cm	VIM052	
Narrow abutment screw	8	30 N.cm	VIM053	
Z1-M multi-unit abutment screw	M	30 N.cm	HO-VIP034	
Short abutment screw Hg < or = 0.7 mm	M	30 N.cm	VIM051	
Long abutment screw Hg = 1.5/3/5 mm / Z1-M abutments	M	30 N.cm	VIM064	
Laboratory screw L = 21.1 mm	8	Manual / 15 N.cm	VTD185	
Transfer screw L = 15.5 mm	8	Manual / 15 N.cm	VTI155	
Laboratory screw L = 20.6 mm	M	Manual / 15 N.cm	VTD186	
Transfer screw L = 15.7 mm	M	Manual / 15 N.cm	VTI157	

**Maintenance**  
For any other screw product code request, please contact us.

## Prosthetic instrumentation

Product name	Kit M	Kit 8	Product code	Preview
Radel prosthetic box - M range	✓	-	A-COF007	
Radel prosthetic box - 8 range	-	✓	A-COF002	
Short hexagonal screwdriver - L = 10.5 mm	✓	✓	A-CHC216	
Medium hexagonal screwdriver - L = 14.75 mm	-	-	A-CHM265	
Long hexagonal screwdriver - L = 19 mm	✓	✓	A-CHL301	
Short hexagonal tip for contra-angle	✓	✓	ET 600	
Long hexagonal tip for contra-angle	✓	✓	ET 700	
Short screw tool for multi-unit abutment	✓	✓	A-MPC103	
Long screw tool for multi-unit abutment	✓	✓	A-MPC198	
Torque wrench	✓	✓	A-CD045	
Square head adaptor for torque wrench	✓	✓	A-MCE070	
Adaptor for contra-angle screwdriver compatible with all brands	-	-	A-MAC070	
Short hexagonal tip for torque wrench	-	-	A-ECD007	
Long hexagonal tip for torque wrench	-	-	A-ECD006	
SwissClip angulation kit - M range	✓	-	KP202	
SwissClip angulation kit - 8 range	-	✓	KP201	
Shoulder height selector - M range	✓	-	M-KHE500	
Shoulder height selector - 8 range	-	✓	O-KHE500	
Locator® screw tool	-	-	A-MEL100	
Short hexagonal screw tool	-	-	A-ME007	
Long hexagonal screw tool	-	-	A-ME006	
Long extractor screw tool for abutment For Z1-M abutment with shoulder > 1.5 mm	✓	-	A-EXT240	
Short extractor screw tool for abutment For M abutment with shoulder < or = 0.7 mm	✓	-	A-EXT230	

# Ready to start?


Thousands of dentists around the world choose the unique Z1 implants because they want the best treatment available for their patients.

**Are you ready to offer this unique solution?**



Unique, like your smile

 GROUPE TBR | 24, impasse René Couzinet  
31500 Toulouse – France

 +33 (0) 5 62 16 71 00

 [contact@tbr.dental](mailto:contact@tbr.dental)



**Find us online**  
**[www.tbr.dental](http://www.tbr.dental)**

The products mentioned in this document are medical devices intended for aesthetic or functional smile rehabilitation, by authorized health professionals. These medical devices are regulated health products that, under this regulation, bear the CE marking. Read the instructions carefully before using the products. All the essential information for correct use of these devices is available from SUDIMPLANT SAS (TBR Group).