

SURGICAL COMFORT

- 1 stage surgery
- No healing screw
- Visibility of the connection

CLINICAL COMFORT

- Anti-bacterial shield
- Ideal for post-extraction
- Immediate aesthetic result

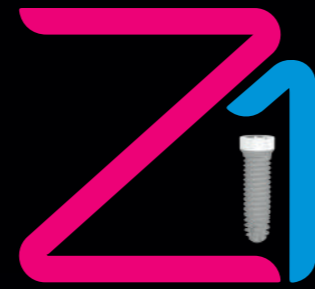
TECHNOLOGICAL COMFORT

- Success rate of 98.6%*
- Pure Titanium and Y-TZP Zirconia
- Adapted to all prosthetic solutions

ECONOMIC COMFORT

- Less chairtime
- Practice development
- Patient satisfaction

TRY IT AND ENJOY THE COMFORT!



FREQUENTLY ASKED QUESTIONS

Clear and accurate answers.

As a dental surgeon, you belong to a scientific community and you have the duty to deliver the best care. Curiosity and a critical mind are two qualities that you will be recognised for. Here are the answers to some of the most frequently asked questions.

The Z1 is a tissue-level implant that requires only 1 surgery. Does it require specific knowledge?

No. If necessary, you will be able to benefit from clinical cases dedicated to the Z1 implant and also expert advice from our teams.

As the Z1 implant combines two different materials, does that mean that it is more fragile?

No. The pure titanium body and the zirconia collar constitute one single piece. It is impossible to disassemble the two materials. The Z1 successfully passed all the mechanical tests that are mandatory before marketing a medical device in Europe, in the USA and in more than 50 countries. Like all ceramics used in dentistry, zirconia is extremely resistant to compression and can support torques that are three times higher than the value needed to place an implant. As a reminder, a Z1 has to be inserted with a maximal torque of 45 N.cm.

Can the Z1 be used in both anterior and posterior cases?

Yes, the diameters and lengths available for the Z1 are identical to those of the bone level implants. Except in particular anatomical situations, the Z1 can be placed in upper or lower jaws and in the molar or aesthetic areas.

The Z1 has a collar height of 1.5mm: how can I deal with my patients' different gingival heights?

Easily. 1.5 mm is an average gingival height, widely spread. In case of gingival height greater than 1.5 mm there is an aesthetic continuity between the ceramics of the implant collar and the final crown, to which the soft tissue adheres. In case of gingival height inferior to 1.5 mm, the zirconia collar can be slightly buried by using the countersink, specially designed for this purpose.

The Z1 is technologically more advanced: is it therefore more expensive?

No, quite the contrary. Despite being a cutting-edge technology, the Z1 is more cost-effective on the short, medium and long term than a conventional bone level implant. Not only because of its technical features but also thanks to its ergonomics in use: time saving, less material needed, simplified maintenance, etc.

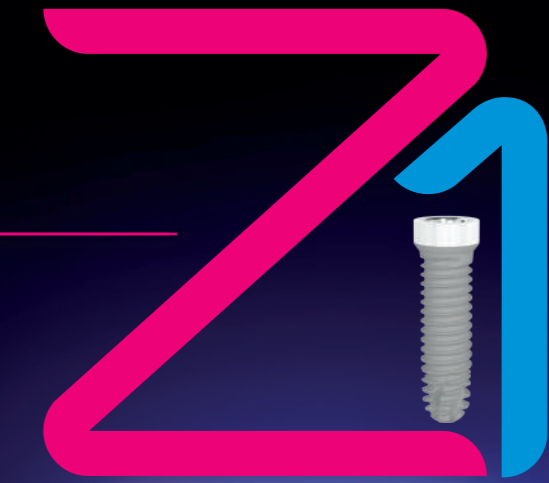
OTHER QUESTIONS
MORE INFORMATION?
CONTACT US.

Non contractual document - Version 02-2017

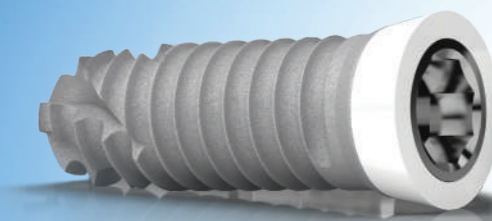
TBR
implants group

The Z1 is a Class IIb medical device protected by patent No. EP1418858
UNITED KINGDOM ☎ 0203 445 0996 ✉ uk@tbrimplants.com
HEADQUARTERS ☎ +33 5 62 16 71 00 ✉ z1@tbrimplants.com

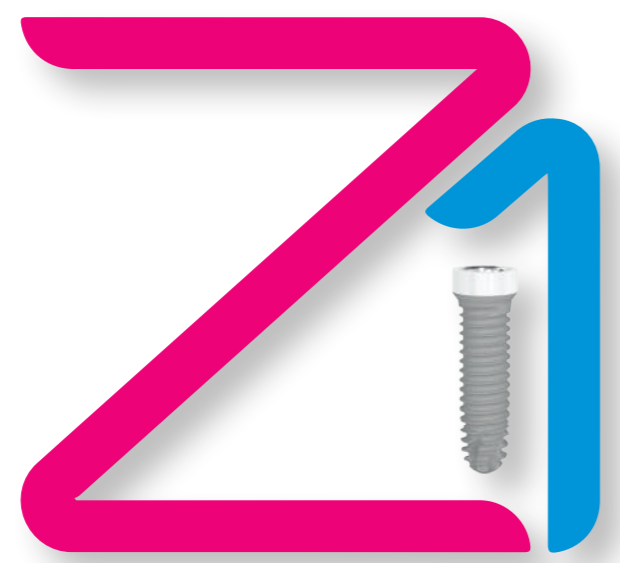
www.z1implants.co.uk



THE WAY TO
COMFORT



TBR
implants group



YOUR COMFORT IN IMPLANTOLOGY

Launched in 2000, the Z1 system is the result of 15 years of innovative research in terms of implant restoration.

The philosophy of the Z1 is clear: it perfectly suits every kind of anatomy. It is the only tissue level implant that adapts selected materials, zirconia and titanium, to the surrounding tissues.

Several generations of Z1 implants have succeeded one another with the same vocation: to bring you the highest level of comfort.

The first Z1 users rapidly learned how to benefit from its advantages ensuring them intellectual tranquillity and material well-being in their implant practice.

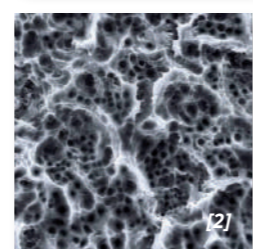
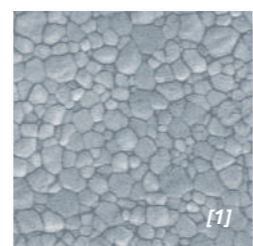
United around this incomparable technology, they are ready to share their experience with you and welcome you into the very privileged circle of Z1 users.



*Z1, one signature:
Z for Zirconia,
1 for 1 surgical stage.*

Bibliography: refer to our «Scientific Studies» brochure

MALTAGLIATI A., SERGIAMPIETRI D., OTT ONELLO E.A., Ruolo del collare in zirconio nella gestione della perimplantite: case report, 2016
 SURYAVANSHI S. et al., Comparative evaluation of the soft tissue response and esthetics of the titanium implants with Zirconium collar, 2011
 MAGLIONE M. et al., Analysis of the wetting characteristics and behavior of stem cells on different implant surfaces, 2011
 LABORATOIRE LEM, Rapport histologique : implantations dans le tissu sous cutané de rat d'implants à technologie zirconio-titane, 2011
 TETÉ et al., Collagen fiber orientation around machined titanium and zirconia dental implant necks : an animal study, JOMI 2009; 24
 BIANCHI, A.E et al., In vitro and In Vivo Follow-up of titanium transmucosal implant with zirconia collar, JABB Vol2, Number 3, 2004
 RIMONDINI L. et al., Bacterial Colonization of Zirconia Ceramic Surfaces: An In vitro and In Vivo Study, JOMI 2002; 17, 6
 BENHAMOU A., Aesthetics and implants: the contribution of the MCB, JOP1994; 63-7



[1] SEM Picture - zirconia surface Y-TZP x6000
 [2] SEM Picture - pure titanium surface grade 4 x2500

- On a macroscopic scale the Z1 includes all the components required for the success of your implant surgery: **biocompatibility, mechanical resistance, primary stability and longevity.**
- On a microscopic scale, the surface condition of zirconia and pure titanium plays an essential role in the stabilization of soft tissues and in the perfect osseointegration. With **an average success rate of 98.6%***, you can rely on the Z1 efficiency.

“An average success rate of 98.6%*”

The Z1 system is universal and can suit all types of prosthetic restoration: cemented, screw-retained or removable solutions.

Compared to a bone level implant system, you handle all prosthetic solutions with less product codes.

* Information collected from the data of the Smiletranquility® Program based on 15.534 patients with Z1 implants from 01.2014 to 01.2016.

TECHNOLOGICAL COMFORT

thanks to a well-proven technology

CLINICAL COMFORT

for patients' well-being

With the Z1 implant, you obtain clinical outcomes unmatched by a traditional bone level implant.

The zirconia emergence of the Z1 behaves as a protective shield for both crestal bone and gingiva, preventing any inflammatory or infectious phenomena.

The Z1 ensures a better aesthetic management of the gingival tissue by generating a creeping attachment of the gingiva and a reconstruction of the papillae:

- With a Z1 placed in anterior position, **there is no greyish transparency.**
- With a Z1 placed in posterior position, **the cervical limits of your prosthetic rehabilitation are optimised** by the zirconia platform.

“I am not afraid of seeing grey spots appear under my gingiva after a few years!”

Better cell behaviour on zirconia.

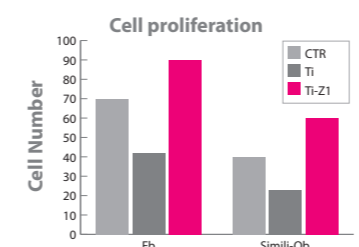


Chart [1] - Enumeration of fibroblasts and osseoblasts after 6 hours of incubation - Test of proliferation on pure titanium (Ti), on zirconia collar (Ti-Z1) and on a sample of Thermanox control (CTR).

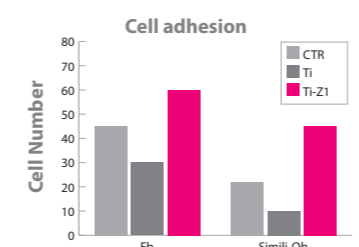


Chart [2] - Enumeration of fibroblasts and osseoblasts after 4 days of incubation - Test of adhesion on pure titanium (Ti), on zirconia collar (Ti-Z1) and on a sample of Thermanox control (CTR).

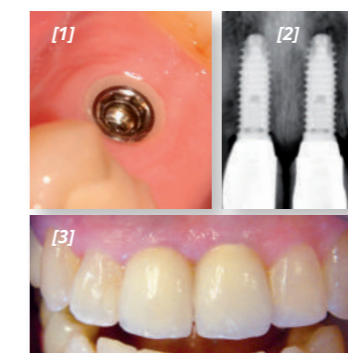


Fig [1] - Z1 collar in anterior position
 Fig [2] - Z1 implants x-ray in front position 11 and Z1
 Fig [3] - Final restoration with Z1 implants in position 11 and Z1

- you have good visibility, you can observe your movements and perfectly control the components to connect with your Z1 implant,
- you no longer need a healing screw, you work with a cover screw [included with the implant] visible and easily accessible,
- your sutures are made around the implant or unnecessary with the flapless technique.

SURGICAL COMFORT

for practitioners' well-being

The advantage of the "1 stage" implant is precisely the fact that it does not need 2 surgeries! The Z1 makes you benefit from numerous advantages at every step:

- you open the surgical site only once: comfortable for you and your patients,
- the Z1 is perfectly autonomous and manages by itself bone and gingival healing, as it perfectly fits both tissues' requirements,

“Every step is easier with the Z1 implant.”

ECONOMIC COMFORT

for a more profitable implantology

The Z1 is the favourite implant of implantologists who worry about optimising their chairtime. Like them, estimate your profit by using the Z1:

- only 1 surgery needed, which means that your operating room and your sterilisation line will only be used once for the same patient,
- your operating room agenda is totally mastered, the aesthetic outcomes achieved on first intention reduce the number of secondary surgical procedures,
- your maintenance appointments are reduced because there are less risks of periodontal diseases, and thus less post-surgical treatments
- your inventory is simplified by a lower and optimised number of products.

“Thanks to the Z1, I save chairtime that I dedicate to the development of my patient portfolio.”



Full-arch upper and lower jaw restoration with 14 Z1 implants.

