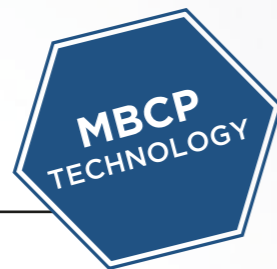


The essence of MBCP Technology

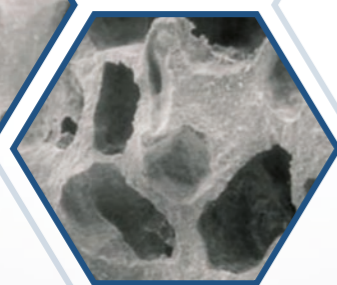
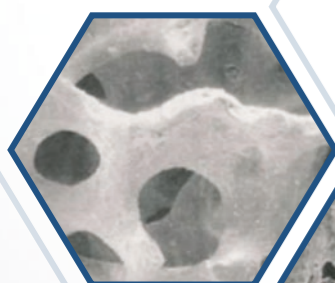


MBCP: Micro/Macroporous Biphasic Calcium Phosphate

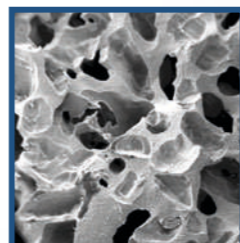
MBCP is a bioactive biphasic calcium phosphate composed of Hydroxyapatite (HA) and Beta Tricalcium Phosphate (β -TCP).

MBCP technology is indicated to fill or reconstruct osseous bone defects in clinical applications without load constraint. Its structure almost reproduces that of the human bone thanks to its porosity and 3D interconnection between micro and macropores.

Natural bone

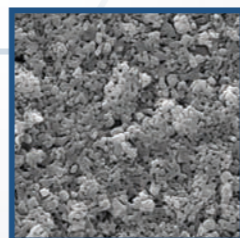


MBCP technology



MACROPORES MBCP > 100 μ m

Macropores are a network of interconnected spaces that promote the biological infiltration and cellular colonisation of osteoblast and osteoclast cells.



MICROPORES MBCP < 10 μ m

Micropores are the intercrystalline spaces where dissolution and recrystallisation occurs.

Key benefits of the MBCP

OSTEOCONDUCTIVE

Matrix for new bone growth.

TWO-PHASE CONCEPT

Hydroxyapatite (HA) alone resorbs too slowly, while Tricalcium Phosphate (TCP) alone resorbs too quickly. MBCP Technology balances resorption rate with bone growth rate.

POROSITY 70%: INTERCONNECTION OF MICRO AND MACROSPORES

Porosity similar to that of cancellous bone: allows proliferation of biological fluids and cell colonisation in a homogeneous way.

MACROPOROSITY MBCP > 100 μ m

Installation of bone cells carried by biological fluids.

MICROPOROSITY MBCP < 10 μ m

For ion exchange: dissolution of TCP and precipitation of bone crystals. New bioactive interface with bone cells.

OVER 30 YEARS OF CLINICAL STUDIES

Bone neoformation demonstrated.

SAFE & REPRODUCIBLE

100% synthetic.

Graftek Neo products are manufactured by:



Biomatlante
Biologics Solutions

BIOMATLANTE SA

5 rue Édouard Belin - ZA Les Quatre Nations
44360 Vigneux-de-Bretagne - France
www.biomatlante.com

Graftek Neo products are exclusively available at:



TBR DENTAL GROUP

24, Impasse René Couzinet 31500 Toulouse - France
05 62 16 71 00 contact@tbr.dental
www.tbr.dental

Non-contractual document - Version 12-2018

NEW

GRAFTEK® NEO

Synthetic bone substitutes for dental indications:
available as granules or as an injectable solution



Distributed by:



GRAFTEK® NEO

Graftek Neo is a synthetic bone substitute composed of 60% of hydroxyapatite (HA) and 40% beta tricalcium phosphate (β -TCP).

Ideally, any biocompatible synthetic bone graft substitute material used to replace or augment graft material should become integrated with the surrounding bone tissue and ultimately be replaced by new healthy bone, as seen with an autologous graft.

Graftek Neo is a biphasic calcium phosphate with a unique structure, micro and macroporous, which resembles the architecture of natural human bone.

Soluble and resorbable, it gradually dissolves in the body, promoting new bone formation through the release of calcium and phosphate ions. In time, the porous structure is completely infiltrated and replaced with healthy, viable bone.



MBCP TECHNOLOGY

PRODUCT CODE: BM0401G50
0.5 CC STERILE VIAL

GRANULOMETRY

500-1000 μ m
(0.5 to 1 mm)

INDICATIONS :

- Extraction sockets
- Sinus lift
- Horizontal augmentation
- Regeneration of peri-implant defects
- Intraosseous lesions (Periodontology)

PRODUCT CODE: BM0302G01
1CC STERILE VIAL

GRANULOMETRY

1000-2000 μ m
(1 to 2 mm)

INDICATIONS :

- Extraction sockets
- Sinus lift
- Alveolar ridge augmentation



INSTRUCTIONS

PRE-HYDRATION - Granules should be hydrated with an isotonic saline solution and then with the patient's blood (follow this order to avoid osmotic shock).

VASCULARISATION
Must always be in contact with vital bone.

DO NOT COMPACT
The granules should not be compacted in order to preserve their porosity.

PRESCRIPTION
Do not overfill.

HEALING - Respect the bone regeneration time: between 5 and 8 months. It is recommended to wait 6 months before placing the implant.



Moisten the granules with an isotonic saline solution in a cup. Place the preparation in the surgical site.



MBCP TECHNOLOGY

GRAFTEK® NEO PUTTY

Graftek Neo Putty is a synthetic injectable bone substitute.

It is an innovative and moldable solution for bone regeneration.

It consists of a mixture of biphasic calcium phosphate granules (made of 60% HydroxyApatite (HA) and 40% Beta Tricalcium Phosphate (β TCP)) and a hydrogel.

Developed to facilitate handling of the product during surgery, Graftek Neo Putty adapts to all forms of grafting sites.

Graftek Neo Putty preserves the initial shape and volume of the site. It is gradually absorbed to be replaced by vital architected bone.

PRODUCT CODE: BM1002PU50DE
0.5 ML SYRINGE

MICRO-GRANULES + HYDROGEL

INDICATIONS :

- Extraction sockets
- Sinus lift
- Regeneration of peri-implant defects
- Intraosseous lesions (Periodontology)



INSTRUCTIONS

NO MOISTURE NECESSARY
Ready to use product.

VASCULARISATION
Must always be in contact with vital bone.

PRESCRIPTION
Must be in contact with a maximum of bone walls.

PUTTY
Does not harden.

COVER
With a resorbable barrier membrane to secure the graft and protect it for at least 3 months.



Press the plunger and put the putty directly into the cavity