



BL

Bone Level Implants





 **TBR**[®]

Unique, like your smile —

CONTENTS

INTRODUCTION	P 4
OCTAGONAL CONNECTION IMPLANTS	P 11
INFINITY IMPLANTS	P 12
CONNECT IMPLANTS	P 14
SURGERY AND MANAGEMENT OF GINGIVAL TISSUES	P 16
IMPRESSION TAKING STAGE	P 18
PROSTHETIC SOLUTIONS	P 20
FIXED CEMENTED PROSTHESIS SOLUTIONS	P 22
FIXED SCREW-RETAINED PROSTHESIS SOLUTIONS	P 26
STABILISATION OF REMOVABLE PROSTHESIS SOLUTIONS	P 28
MORSE TAPER CONNECTION IMPLANTS	P 31
M IMPLANTS	P 32
SURGERY AND MANAGEMENT OF GINGIVAL TISSUES	P 34
IMPRESSION TAKING STAGE	P 36
PROSTHETIC SOLUTIONS	P 38
FIXED CEMENTED PROSTHESIS SOLUTIONS	P 40
FIXED SCREW-RETAINED PROSTHESIS SOLUTIONS	P 42
STABILISATION OF REMOVABLE PROSTHESIS SOLUTIONS	P 44
SHORT IMPLANTS	P 47
BABY M AND BABY 8 IMPLANTS	P 48
INSTRUMENTATION & ACCESSORIES	P 51

AN IMPLANT SOLUTION...

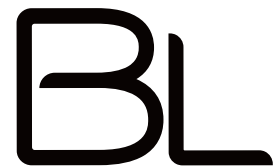
The choice of implant technique, specific to each user, must **match the clinical situation requiring treatment.**



This is why TBR provides different implant ranges that not only **facilitate the daily practice of implantology**, but also - and above all - **satisfy the periodontal requirements.**



TISSUE LEVEL



BONE LEVEL



... FOR EVERY PATIENT.

1 STAGE IMPLANTS - SOFT TISSUE LEVEL

The Zirconia Y-TZP collar technology has proven to be a real aesthetic anti-bacterial shield.

2 STAGE IMPLANTS - BONE LEVEL

The perfect implant/abutment fit with Platform Switching releases a new biological space for better tissue stability.

MORSE TAPER CONNECTION IMPLANTS

A 4° double Morse taper implies proven precision and imperviousness.

IMPLANTS WITH INTERNAL OCTAGONAL CONNECTION

A flat 8-sided connection provides total freedom for your prosthetic restorations.

SHORT IMPLANTS [BABY]

Implant length of 6 mm to avoid sinus lift surgery or bone filling.

BABY IMPLANTS



A PROSTHETIC SOLUTION...

1st step of the implant treatment, the design of the prosthetic project will provide the specifications for the implant rehabilitation.

The aim is to **restore a function and obtain an aesthetic result** compatible with the patient's expectations.

Communication between the different parties involved in the treatment (**practitioner, prosthesis laboratory, agent**) is essential to achieve the desired objective.

Which type of prosthesis to choose for the restoration?

Whatever your choice, whatever the case to be treated, TBR offers **a fully comprehensive range of prosthetic components**.

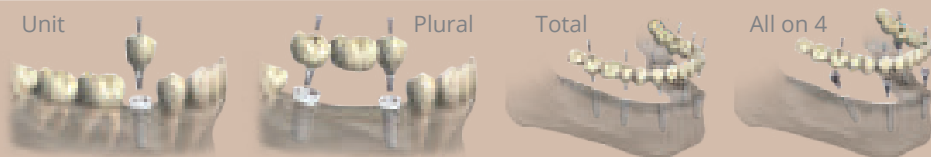


...FOR EVERY PATIENT.

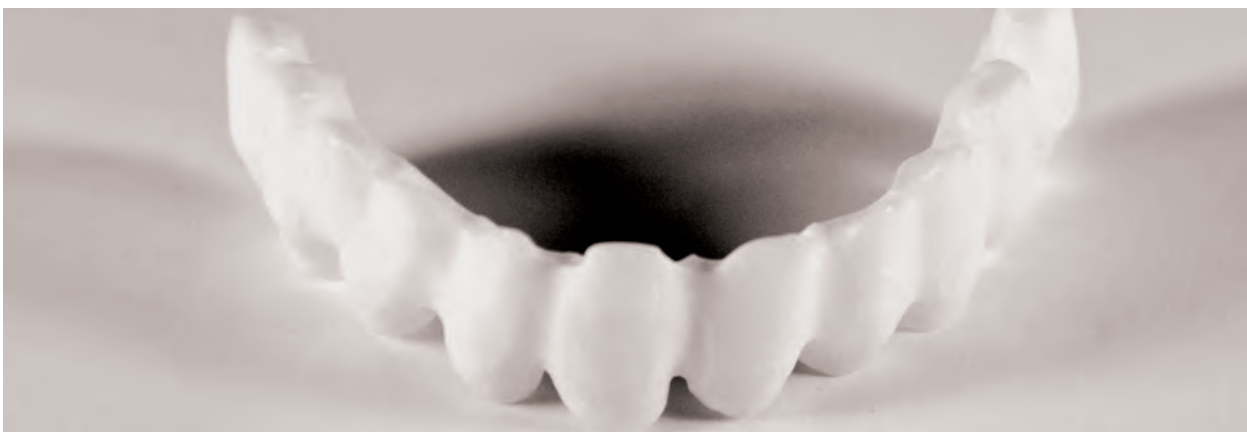
Cemented



Screw-retained



Removable



SOME GUIDELINES...

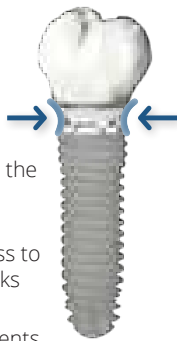
Make surgery and prostheses easier!

TBR implants and prosthetics systems have a multitude of benefits and tools to simplify your daily practice.

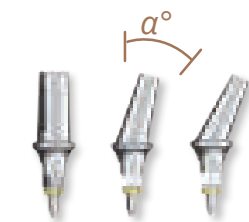
■ Platform switching

💡 Benefits

- Gingival ring-shaped sleeve around the implant
- Absolute imperviousness to bacterial attacks
- Reduction of micro-movements and inflammatory infiltration on the peri-implant crestal bone
- Long-lasting aesthetics, bone tissue stability and soft tissue preservation



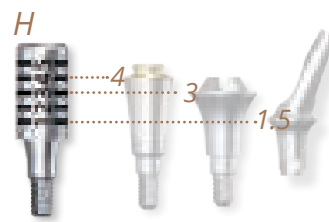
■ Angulation kit



💡 Tips for use

The angulation kit makes it easy to select the appropriate angulation for the clinical case requiring treatment.

■ Shoulder height selector

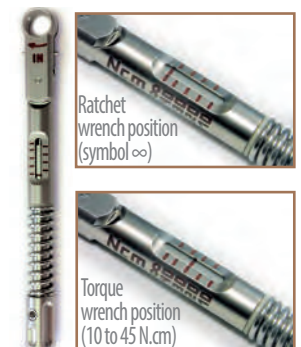


💡 Tips for use

The shoulder height selector measures the available gingiva.

■ Torque wrench

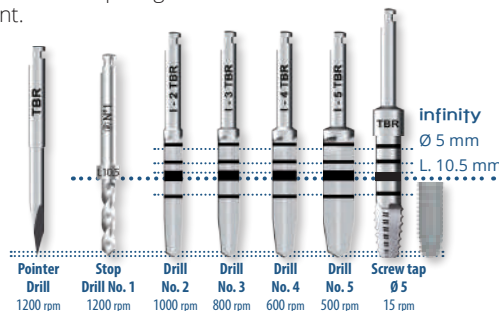
💡 Dual function



■ Drilling sequence

💡 Tips for use

The TBR implants are placed in the bone following a unique and simple drilling protocol.



Implant platform & Universal colour code

To make it easier to identify the right components to use, all our systems are colour-coded.

The reference of this code is the **diameter of the implant platform**, each platform thus having its own colour.



		2	BONE LEVEL IMPLANTS
MORSE TAPER CONNECTION IMPLANTS	Ø3.2	Green	
	Ø3.9	Grey	
	Ø4.7	Blue	
OCTAGONAL CONNECTION IMPLANTS	Ø3.5	Green	
	Ø4	Grey	
	Ø5	Blue	

The temporary titanium prosthetic component families follow this colour code:

- Healing screws
- Cover screws
- Impression transfers
- Analogues



... FOR BETTER ORIENTATION.

Packaging and text

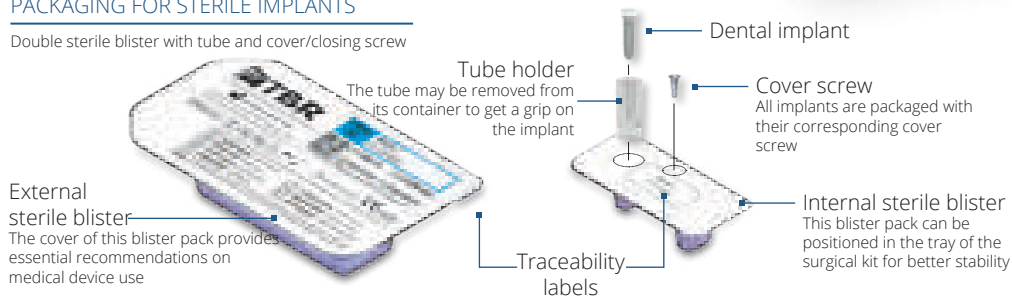
Each product is checked and packaged individually, in an ultra-clean environment. You and all TBR users expect your manufacturer to provide a product **with guaranteed origin and quality**. All our products, sterile or non-sterile, carry the CE mark and therefore meet the regulatory requirements associated with all medical devices.



Implant

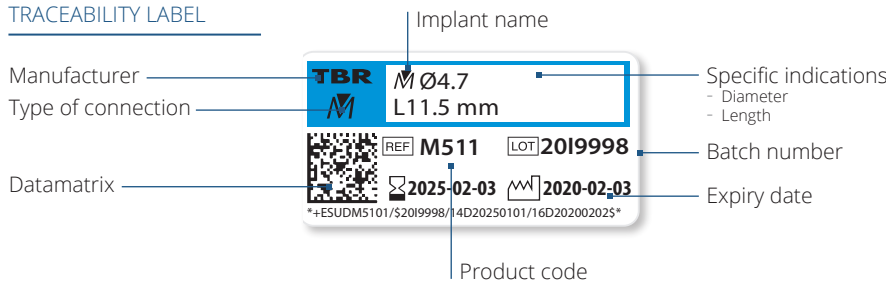
PACKAGING FOR STERILE IMPLANTS

Double sterile blister with tube and cover/closing screw



Packaging containing 4 detachable and repositionable traceability labels

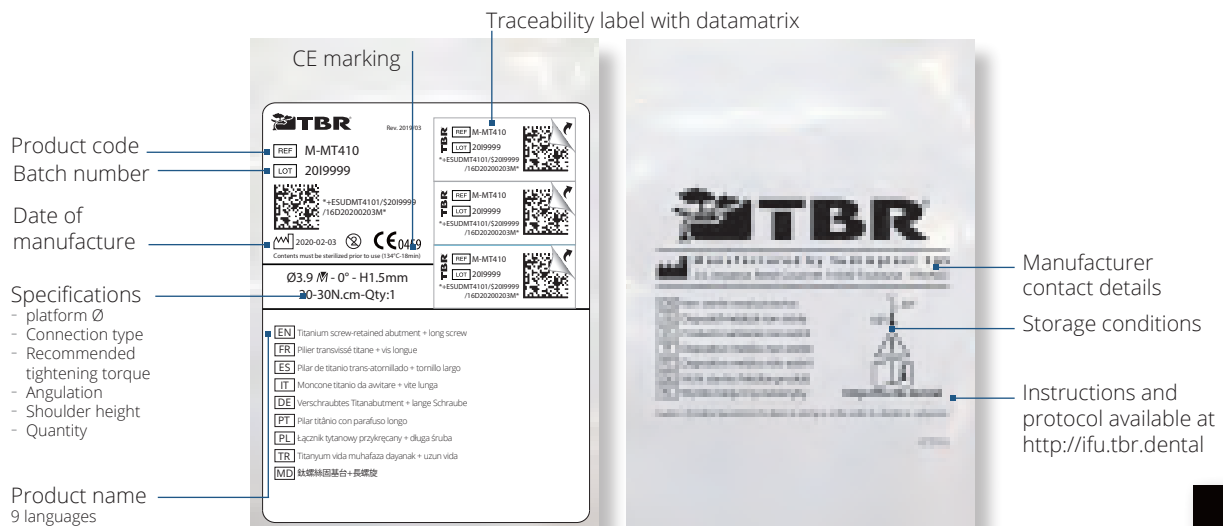
TRACEABILITY LABEL

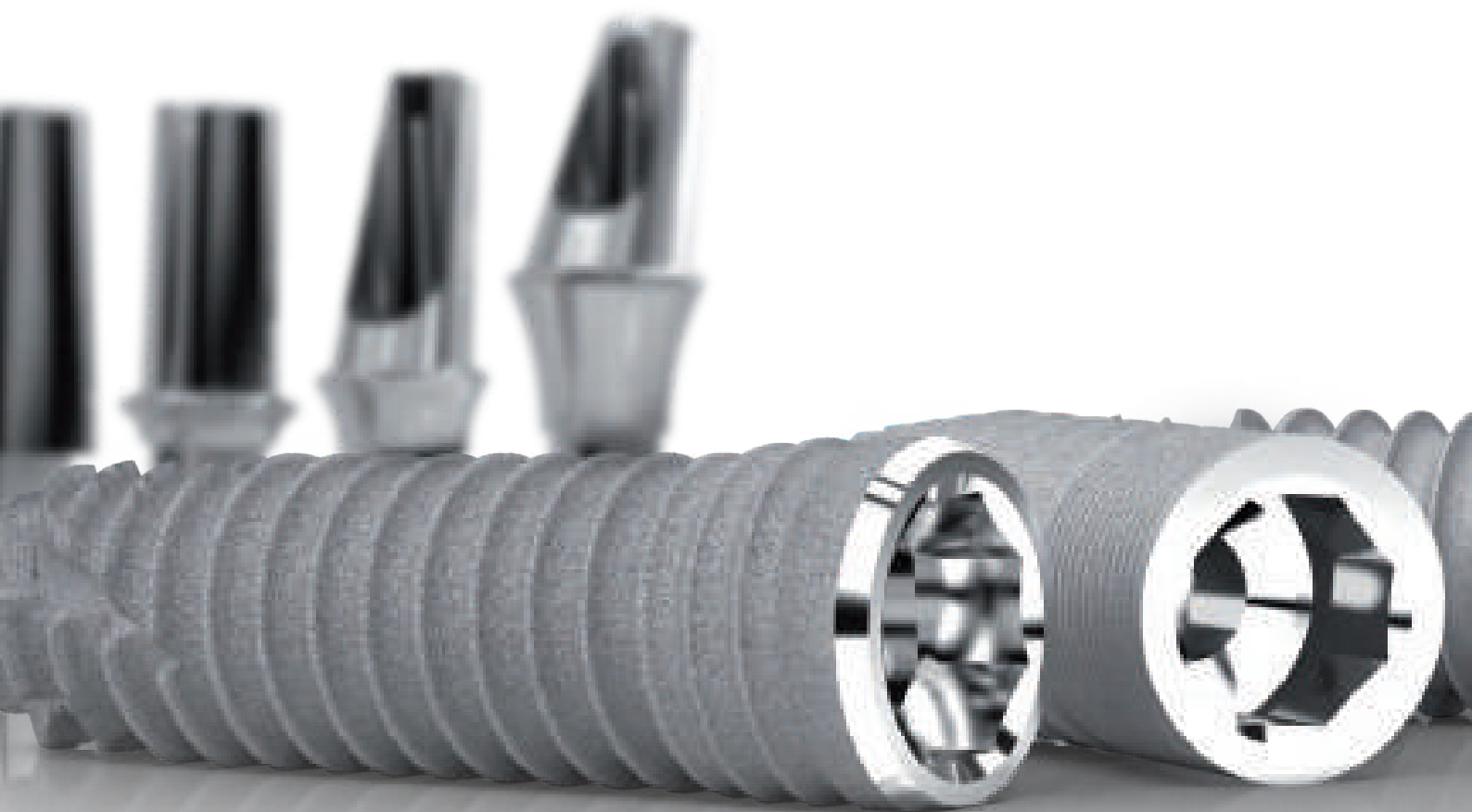


Prosthesis

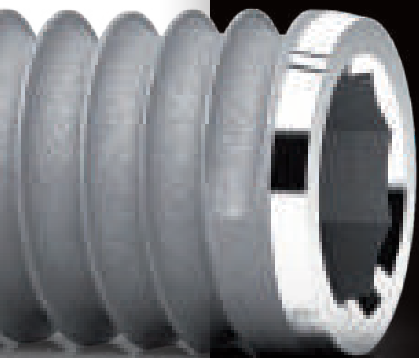
PACKAGING FOR NON-STERILE PROSTHETIC COMPONENTS

Individual sachet with 3 detachable and repositionable labels





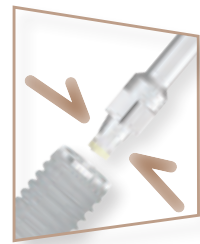
Implant systems with
8 Connection
Flat friction &
Internal octagon



infinity

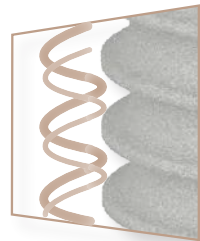
SWISSCLIP TECHNOLOGY

- Clipping system between the implant and the screw tools for contra-angle or for torque wrench
- Gripping and direct positioning of the implant without digital contact
- Real time-saving and high accuracy
- Available for direct technique transfers and for the angulation kit



ASYNCHRONOUS DUAL SCREW THREAD

- Self-tapping rounded macrothreads
- Prevention of cortical bone compression phenomena
- Optimal primary stability



MATERIALS

- **Grade 4 Titanium:** T60 commercially pure Grade 4 T60 commercially pure titanium meets the requirements of ISO 5832-2 and the American Society for Testing and Materials (ASTM F67 3.7065)

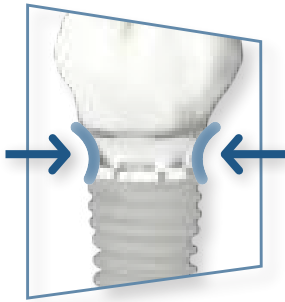


2

2 STAGE IMPLANTS - BONE LEVEL

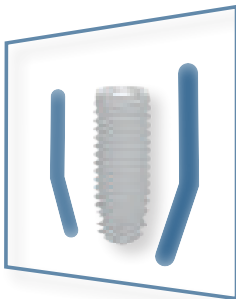
The perfect implant/abutment fit with Platform Switching releases a new biological space for better tissue stability.

PLATFORM SWITCHING



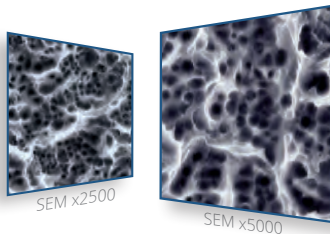
- Gingival ring-shaped sleeve around the implant
- Absolute imperviousness to bacterial attacks
- Reduction of micro-movements and inflammatory infiltration on the peri-implant crestal bone
- Long-lasting aesthetics, bone tissue stability and soft tissue preservation

CCS BIOSHAPE



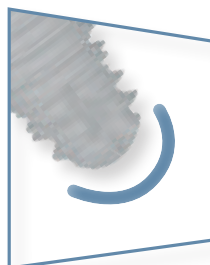
- Conical cruciform apex with a wide thread diameter
- Cylindrical body to maintain close bone contact
- Spherical collar with a bevelled top to limit bone stress and preserve the crestal bone
- Optimal primary stability and insertion safety

SURFACE TREATMENT



The implants incorporate a sandblasting and hydrofluoric acid-etching surface treatment that promotes the osseointegration process.

ATRAUMATIC APEX

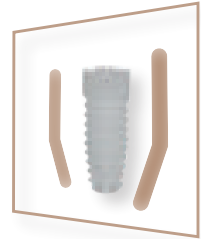


- Apex with atraumatic convexity
- Ideal for sinus lifts
- Self-tapping claw

Connect

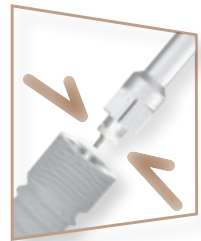
CC BIOSHAPE

- Self-tapping conical cruciform apex
- Cylindrical body to maintain close bone contact
- Optimal primary stability and insertion safety



SWISSCLIP TECHNOLOGY

- Clipping system between the implant and the screw tools for contra-angle or for torque wrench
- Gripping and direct positioning of the implant without digital contact
- Real time-saving and high accuracy
- Available for direct technique transfers and for the angulation kit



MATERIALS

- **Grade 4 Titanium:** T60 commercially pure
Grade 4 T60 commercially pure titanium meets the requirements of ISO 5832-2 and the American Society for Testing and Materials (ASTM F67 3.7065)

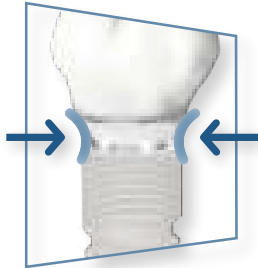


2

2 STAGE IMPLANTS - BONE LEVEL

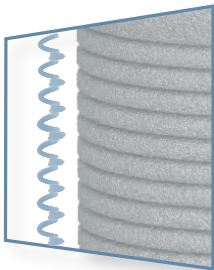
The perfect implant/abutment fit with Platform Switching releases a new biological space for better tissue stability.

PLATFORM SWITCHING



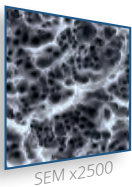
- Gingival ring-shaped sleeve around the implant
- Absolute imperviousness to bacterial attacks
- Reduction of micro-movements and inflammatory infiltration on the peri-implant crestal bone
- Long-lasting aesthetics, bone tissue stability and soft tissue preservation

MICROTHREADED COLLAR

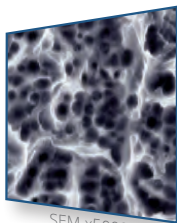


- Limits the effects of micro-movements
- Drastically reduces inflammatory infiltration on the peri-implant crestal bone, and preserves the vertical integrity of the bone ridge
- Improved vascularisation of the area, thus protecting the peri-implant periodontal tissue

SURFACE TREATMENT



SEM x2500



SEM x5000

The implants incorporate a **sandblasting and hydrofluoric acid-etching** surface treatment that promotes the osseointegration process.

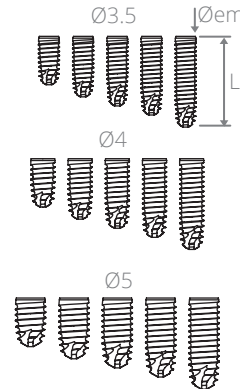
ATRAUMATIC APEX



- Apex with atraumatic convexity
- Ideal for sinus lifts
- Self-tapping claw

Dental implant range 8 - Family: infinity

Diameter (mm) \ Length (mm)	Platform Ø3.5 mm	Platform Ø4 mm	Platform Ø5 mm	Preview
8 mm	I308	I408	I508	
10.5 mm	I310	I410	I510	
11.5 mm	I311	I411	I511	
13 mm	I313	I413	I513	
15.5 mm	I315	I415	I515	

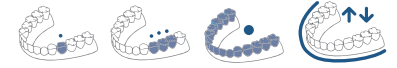


Technical pattern
 Øem: Emergence diameter
 L: Length

Setting
 45 N.cm

Delivered with a cover screw

Indication

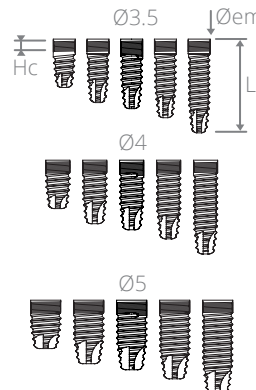


Colour code

● Ø3.5 ● Ø4 ● Ø5

Dental implant range 8 - Family: Connect

Diameter (mm) \ Length (mm)	Platform Ø3.5 mm	Platform Ø4 mm	Platform Ø5 mm	Preview
8 mm	X308	X408	X508	
10.5 mm	X310	X410	X510	
11.5 mm	X311	X411	X511	
13 mm	X313	X413	X513	
15.5 mm	X315	X415	X515	

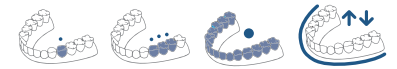


Technical pattern
 Øem: Emergence diameter
 Hc: Height of microthreaded collar 2 mm
 L: Length

Setting
 45 N.cm

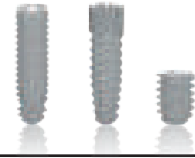
Delivered with a cover screw

Indication



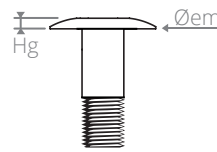
Colour code

● Ø3.5 ● Ø4 ● Ø5



■ Cover screw

Ø implant	Øem (mm)	Hg (mm)	Product code	Preview
Ø3.5	Ø3.5	0.5	O-VIO350	
Ø4	Ø4		O-VIO400	
Ø5	Ø5		O-VIO500	



Technical pattern
Øem: Emergence diameter

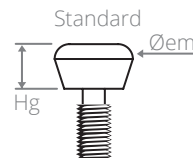


Colour code

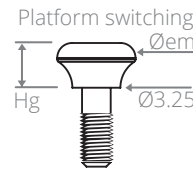
- Ø3.5
- Ø4
- Ø5

■ Standard and platform switching healing screws

Ø implant	Øem (mm)	Profile	Hg (mm)	Product code	Preview
Ø3.5	Ø4.55	ST	3	HO-VT330	
			5	HO-VT350	
			7	HO-VT370	
		PS	3	HO-VTS330	
			5	HO-VTS350	
			7	HO-VTS370	
Ø4	Ø5.3	ST	3	HO-VT430	
			5	HO-VT450	
			7	HO-VT470	
		PS	3	HO-VTS430	
			5	HO-VTS450	
			7	HO-VTS470	
Ø5	Ø6.3	ST	3	HO-VT530	
			5	HO-VT550	
			7	HO-VT570	
		PS	3	HO-VTS530	
			5	HO-VTS550	
			7	HO-VTS570	



Technical pattern
Øem: Emergence diameter
Hg: Gingival height
ST: Standard profile
PS: Platform switching profile



Colour code

- Ø3.5
- Ø4
- Ø5



Tips for use

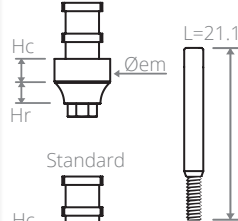
The platform switching healing screw is used to prepare soft tissues to receive a platform switching abutment.

COMPONENTS FOR THE IMPRESSION-TAKING AND MASTER CAST-MAKING

■ Impression Transfer - Direct Technique "Pick-up"

Ø implant	Øem (mm)	Hr (mm)	Hc (mm)	Profile	Product code	Preview
Ø3.5	Ø4.25			Standard	O-TD300	
				PS	O-TDS300	
Ø4	Ø5	2	2	Standard	O-TD400	
				PS	O-TDS400	
Ø5	Ø6			Standard	O-TD500	
				PS	O-TDS500	

Platform switching



Technical pattern

Hc: Cylindrical height
Øem: Emergence diameter
Hr: Radial height
PS: Platform switching

Manual screwing
Delivered with a screw Ref. VTD185

Indication

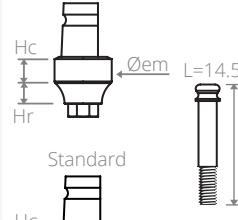
Colour code

● Ø3.5 ● Ø4 ● Ø5

■ Impression Transfer - Indirect Technique "Pop-in"

Ø implant	Øem (mm)	Hr (mm)	Hc (mm)	Profile	Product code	Preview
Ø3.5	Ø4.25			Standard	O-TI300	
				PS	O-TIS300	
Ø4	Ø5	2	2	Standard	O-TI400	
				PS	O-TIS400	
Ø5	Ø6			Standard	O-TI500	
				PS	O-TIS500	

Platform switching



Technical pattern

Hc: Cylindrical height
Øem: Emergence diameter
Hr: Radial height
PS: Platform switching

Manual screwing
Delivered with a screw Ref. VTI155

Indication

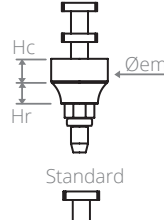
Colour code

● Ø3.5 ● Ø4 ● Ø5

■ Impression Transfer - Direct Technique "SwissClip"

Ø implant	Øem (mm)	Hr (mm)	Hc (mm)	Profile	Product code	Preview
Ø3.5	Ø4.25			Standard	O-TDC300	
				PS	O-TDCS300	
Ø4	Ø5	2	2	Standard	O-TDC400	
				PS	O-TDCS400	
Ø5	Ø6			Standard	O-TDC500	
				PS	O-TDCS500	

Platform switching



Technical pattern

Hc: Cylindrical height
Øem: Emergence diameter

Hr: Radial height
PS: Platform switching

Indication

Colour code

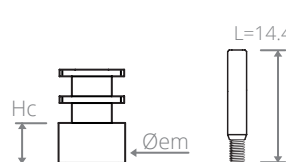
● Ø3.5 ● Ø4 ● Ø5

Tips for use

Optimal use when the implant axis is straight.

■ Impression Transfer - Direct Technique for Multi-Unit Abutment

Ø implant	Øem (mm)	Hc (mm)	Product code	Preview
Ø3.5	Ø4.25	3	HO-TDP300	
Ø4	Ø5		TDP400	
Ø5	Ø6		TDP500	



Technical pattern

Hc: Cylindrical height
Øem: Emergence diameter

Manual screwing
Delivered with a screw Ref. VTD098

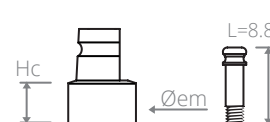
Indication

Colour code

● Ø3.5 ● Ø4 ● Ø5

■ Impression Transfer - Indirect Technique for Multi-Unit Abutment

Ø implant	Øem (mm)	Hc (mm)	Product code	Preview
Ø3.5	Ø4.25	3	HO-TIP300	
Ø4	Ø5		TIP400	
Ø5	Ø6		TIP500	



Technical pattern

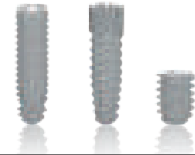
Hc: Cylindrical height
Øem: Emergence diameter

Manual screwing
Delivered with a screw Ref. VTI088

Indication

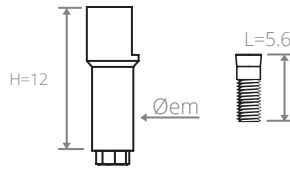
Colour code

● Ø3.5 ● Ø4 ● Ø5



Scanbody - Digital transfer

Ø implant	Øem (mm)	Product code	Preview
Ø3.5 Ø4 Ø5	Ø3.5	O-SCN000	



Technical pattern

H: PEEK part height
Øem: Emergence diameter

Manual screwing
Delivered with a screw Ref. VIMC045

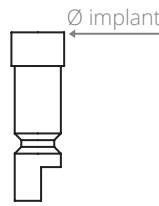
Special CAD / CAM

Indication

Tips for use For multi-unit abutment restorations, use the PEEK scanbodies sheaths provided for this purpose (P27).

Implant analogue

Ø implant	Product code	Preview
Ø3.5	O-RL300	
Ø4	O-RL400	
Ø5	O-RL500	



Technical pattern

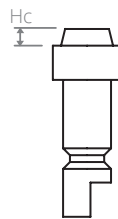
Ø implant: Implant platform diameter

Indication

Colour code ● Ø3.5 ● Ø4 ● Ø5

Multi-unit abutment analogue

Ø implant	Hc (mm)	Product code	Preview
Ø3.5	1	HO-HPS300	
Ø4		HPS400	
Ø5		HPS500	



Technical pattern

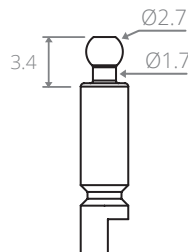
Ø implant: Implant platform diameter
Hc: Cone height (replica of the multi-unit abutment)

Indication

Colour code ● Ø3.5 ● Ø4 ● Ø5

Spherical attachment analogue

Ø implant	Product code	Preview
Ø3.5 Ø4 Ø5	HAS001	



Technical pattern

Compatible with cap or O-ring retention systems

Indication

Equator® abutment analogue

Ø implant	Product code	Preview
Ø3.5 Ø4 Ø5	HEQU000 (144AE)	

Equator® abutment transfer

Ø implant	Product code	Preview
Ø3.5 Ø4 Ø5	TEQU200 (x2) (044CAIN)	

Locator® abutment analogue

Ø implant	Product code	Preview
Ø3.5 Ø4	HLOC400 (8530)	
Ø5	HLOC500 (8516)	

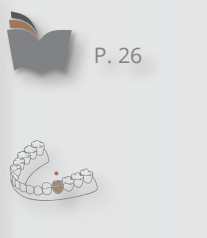
Locator® abutment transfer

Ø implant	Product code	Preview
Ø3.5 Ø4 Ø5	TDLOC100 (8505)	

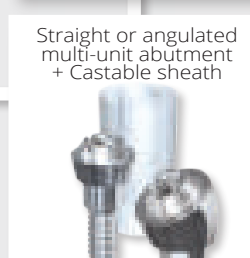
Standard prosthetic solutions

Cemented prosthesis

Screw-retained prosthesis

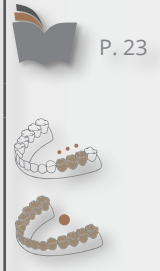
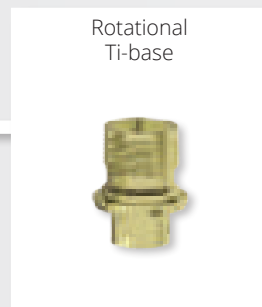
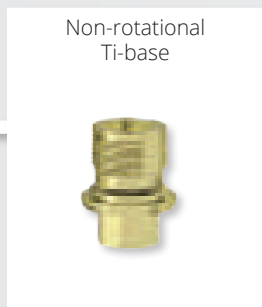
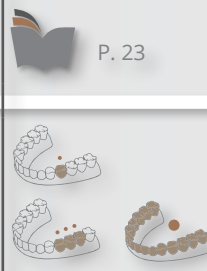


Secondary elements



Customised prosthetic solutions

Additional parts for CAD / CAM use



Removable prosthesis

Secondary elements

Retention, accessories and instrumentation

Retention, accessories and instrumentation

Spherical attachment + Cap or O-ring

Equator® abutment

Locator® abutment

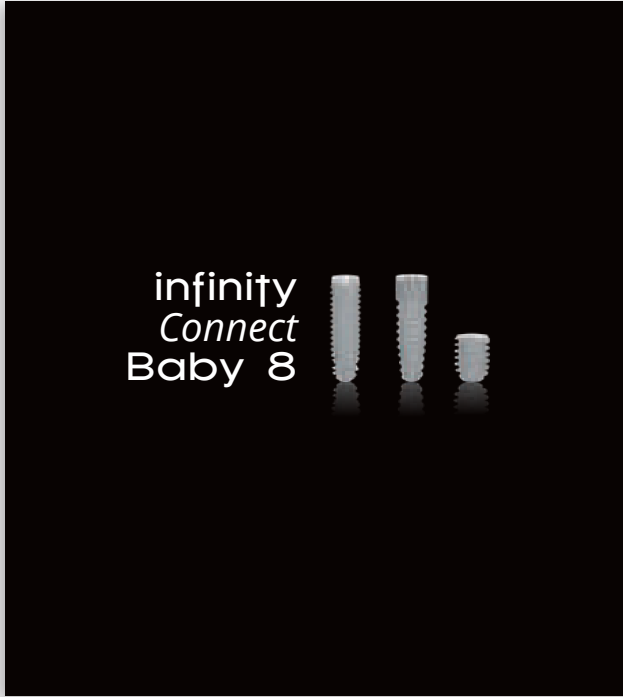
Straight or angulated multi-unit abutment + Castable sheath

P. 28

P. 28

P. 28

P. 27



Caption and comments



SINGLE-UNIT FIXED RESTORATION



FULL-ARCH FIXED RESTORATION



2 STAGE IMPLANT BONE LEVEL



COMPONENT THAT CAN BE USED BY YOUR CAD / CAM SYSTEM



MULTIPLE-UNIT FIXED RESTORATION



REMOVABLE RESTORATION



REFER TO THE SPECIFIED PAGES



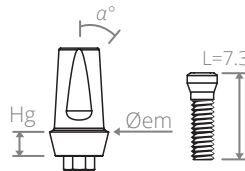
RECOMMENDED TIGHTENING TORQUE



The final prosthetic components are gradually being delivered with 2 screws:
 - 1 laboratory screw,
 - 1 final screw.

■ PEEK temporary abutment

Ø implant	Øem (mm)	Hg (mm)	α°	Product code	Preview
Ø3.5	Ø4.25	2	0°	O-MP300	
			15°	O-MP301	
Ø4	Ø5		0°	O-MP400	
			15°	O-MP401	
Ø5	Ø6		0°	O-MP500	
			15°	O-MP501	

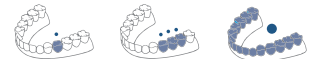


Technical pattern

Hg: Gingival height
Øem: Emergence diameter
α°: Angulation

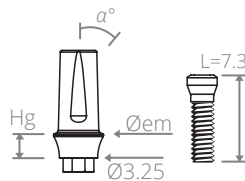
Screwing 30 N.cm
Delivered with a screw Ref. VIM052

Indication



■ PEEK Platform switching temporary abutment

Ø implant	Øem (mm)	Hg (mm)	α°	Product code	Preview
Ø3.5	Ø4.25	2	0°	O-MPS300	
Ø4	Ø6		0°	O-MPS500	
Ø5					

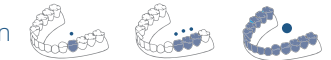


Technical pattern

Hg: Gingival height
Øem: Emergence diameter
α°: Angulation

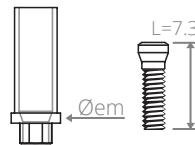
Screwing 30 N.cm
Delivered with a screw Ref. VIM052

Indication



■ Non-rotational castable abutment

Ø implant	Øem (mm)	Product code	Preview
Ø3.5	Ø4	O-MC300	
Ø4	Ø4	O-MC400	
Ø5	Ø5	O-MC500	

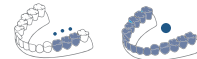


Technical pattern

Øem: Emergence diameter

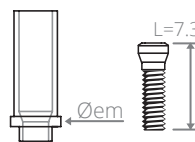
Screwing 30 N.cm
Delivered with 2 screws Ref. VIM052

Indication



■ Rotational castable abutment

Ø implant	Øem (mm)	Product code	Preview
Ø3.5	Ø4	O-MCR300	
Ø4	Ø4	O-MCR400	
Ø5	Ø5	O-MCR500	

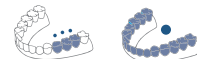


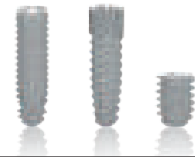
Technical pattern

Øem: Emergence diameter

Screwing 30 N.cm
Delivered with 2 screws Ref. VIM052

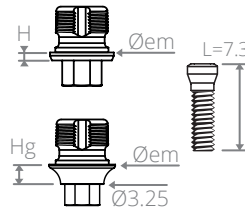
Indication





■ Non-rotational Ti-base / connection base

Ø implant	Øem (mm)	Hg (mm)	Product code	Preview
Ø3.5	Ø4.25	0.5	O-BAS300	
Ø4			O-BAS400	
Ø5			O-BAS500	
Ø3.5 Ø4 Ø5	Ø5	1.5	O-BAS410	



Technical pattern

Hg: Gingival height
Øem: Emergence diameter

Screwing
30 N.cm
Delivered with 2
screws Ref. VIM052

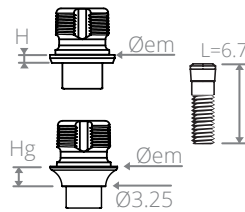
Special CAD / CAM

Indication



■ Rotational Ti-base / connection base

Ø implant	Øem (mm)	Hg (mm)	Product code	Preview
Ø3.5	Ø4.25	0.5	O-BASR300	
Ø4			O-BASR400	
Ø5			O-BASR500	
Ø3.5 Ø4 Ø5	Ø5	1.5	O-BASR410	



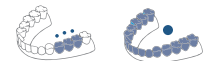
Technical pattern

Hg: Gingival height
Øem: Emergence diameter

Screwing
30 N.cm
Delivered with 2
screws Ref. VIM053

Special CAD / CAM

Indication



■ CEREC®-compatible Ti-base

Ø implant	Gingival height (mm)			Block S	Ø Shldr*S	Block L	Ø Shldr*L	Preview
	0.5	1.5	3.0					
Ø3.5	O-TBSS300 ⁽¹⁾	O-TBSS310 ⁽¹⁾	O-TBSS330 ⁽¹⁾	FX 3.4 S	Ø3.9	N/A	N/A	 Emergence Ø3.9 mm
	O-TBS300							
Ø4.0	O-TBS400	O-TBS410	O-TBS430	N/A	N/A	AT OS 3.5/4.0	Ø4.4	 BLOCK S BLOCK L
	N/A							
Ø5.0	O-TBS500	N/A	N/A	N/A	N/A	AT OS 4.5/5.0	Ø5.0	 Emergence Ø4.4 mm Emergence Ø5 mm Emergence Ø4.4 mm

Tips for use

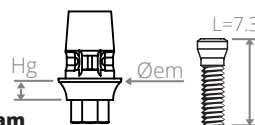
The CEREC®-compatible Ti-bases are used with SIRONA® scanbodies:



Product code for **OmnicaM**
6431311 block S
6431329 block L



Product code for **Bluecam**
6431295 block S
6431303 block L



Technical pattern

Hg: Gingival height
Øem: Emergence diameter

Screwing
30 N.cm
Delivered with 2 screws
Ref. VIM052

Special CAD / CAM

Indication

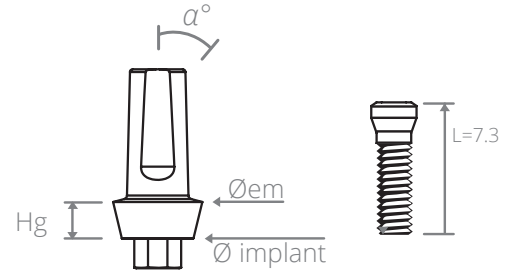


(*) Shoulder

(1) These references require "S" blocks, unlike the others which use "L" blocks.

Titanium final abutment

Ø implant	Øem (mm)	α°	Hg (mm)	Product code	Preview			
Ø3.5	Ø4.25	0°	0	O-MT300				
			2	O-MT320				
			4	O-MT340				
		15°	Ø4.25	0°	0	O-MT301		
					2	O-MT321		
					4	O-MT341		
				25°	0°	0	O-MT302	
						2	O-MT322	
						4	O-MT342	
		Ø4	Ø5	0°	0	ZC-MT000		
					2	O-MT420		
					4	O-MT440		
15°	Ø5			0°	0	ZC-MT001		
					2	O-MT421		
					4	O-MT441		
				25°	0°	0	ZC-MT002	
						2	O-MT422	
						4	O-MT442	
Ø5	Ø6			0°	0	O-MT500		
					2	O-MT520		
					4	O-MT540		
		15°	Ø6	0°	0	O-MT501		
					2	O-MT521		
					4	O-MT541		
				25°	0°	0	O-MT502	
						2	O-MT522	
						4	O-MT542	



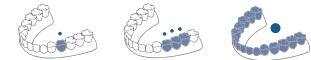
Standard emergence profile

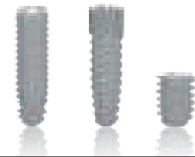
Technical pattern

Hg: Gingival height
 Øem: Emergence diameter
 α°: Angulation

Screwing
 30 N.cm
 Delivered with
 2 screws
 Ref. VIM052

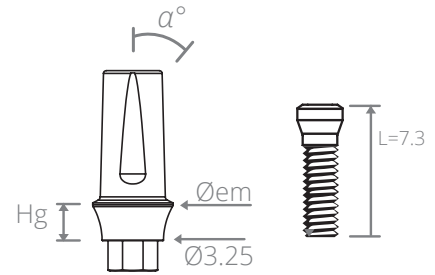
Indication





■ Titanium Platform switching final abutment

Ø implant	Øem (mm)	α°	Hg (mm)	Product code	Preview
Ø3.5 Ø4 Ø5	Ø4.25	0°	1	O-MTS310	
			2	O-MTS320	
		15°	1	O-MTS311	
			2	O-MTS321	
		25°	1	O-MTS312	
			2	O-MTS322	
	Ø5	0°	1	O-MTS410	
			2	O-MTS420	
		15°	1	O-MTS411	
			2	O-MTS421	
		25°	1	O-MTS412	
			2	O-MTS422	



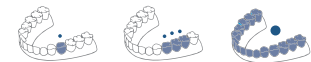
Platform switching emergence profile

Technical pattern

Hg: Gingival height
Øem: Emergence diameter
α°: Angulation

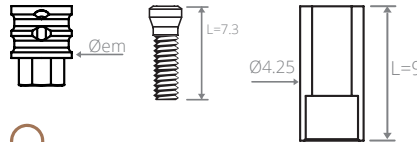
Screwing
30 N.cm
Delivered with
2 screws
Ref. VIM052

Indication



■ Non-rotational Cr/Co screw-retained overflow ring

Ø implant	Øem (mm)	Product code	Preview
Ø3.5 Ø4.0 Ø5.0	Ø3.5	O-MS301	



Technical pattern

Øem: Emergence diameter
Delivered with a castable sheath Ref. GS930

Screwing 30 N.cm
Delivered with 2 screws
Ref. VIM052

Indication

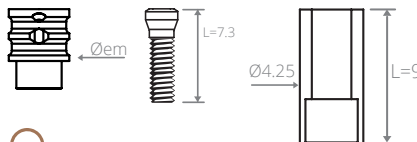


Tips for use

The overflow rings can also be used for cemented rehabilitation.

■ Rotational Cr/Co screw-retained overflow ring

Ø implant	Øem (mm)	Product code	Preview
Ø3.5 Ø4.0 Ø5.0	Ø3.5	O-MSR301	



Technical pattern

Øem: Emergence diameter
Delivered with a castable sheath Ref. GS930

Screwing 30 N.cm
Delivered with 2 screws
Ref. VIM052

Indication

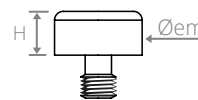


Tips for use

The overflow rings can also be used for cemented rehabilitation.

■ Protective cap for Multi-Unit Abutment

Ø implant	Øem (mm)	Hc (mm)	Product code	Preview
Ø3.5	Ø4.25	2.5	HO-CP300	
Ø4	Ø5		HO-CP400	
Ø5	Ø6		HO-CP500	

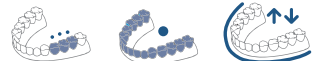


Technical pattern

Øem: Emergence diameter
H: Height

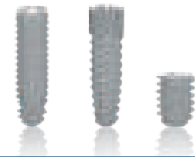
Screwing 15 N.cm

Indication



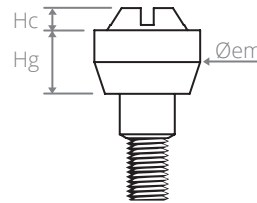
Colour code

● Ø3.2 ● Ø3.9 ● Ø4.7



■ Straight Multi-Unit Abutment

Ø implant	Øem (mm)	Hc (mm)	Hg (mm)	Product code	Preview
Ø3.5	Ø4.25	1	0.7	O-PCS307	
			1.5	O-PCS310	
			3	O-PCS330	
Ø4	Ø5	1	0.7	O-PCS407	
			1.5	O-PCS410	
			3	O-PCS430	
Ø5	Ø6	1	0.7	O-PCS507	
			1.5	O-PCS510	
			3	O-PCS530	



Screwing for the multi-unit abutment
15 N.cm

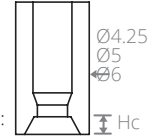
Screwing
30 N.cm
Delivered with 2 screws Ref. VIM045

Technical pattern

Øem: Emergence diameter
Hc: Cone height
Hg: Gingival height
Hg1: Min gingival height
Hg2: Max gingival height

The straight multi-unit abutments are delivered with a castable sheath:
Ref. GP004/005/006.

Ref. GP004
GP005
GP006

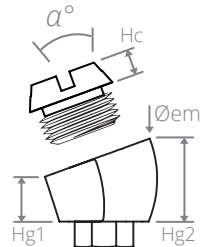


■ Angulated Multi-Unit Abutment

Ø implant	Øem (mm)	α°	Hg 1 (mm)	Hg 2 (mm)	Hc (mm)	Product code	Preview
Ø3.5	Ø4	1	20°	2	3.5	O-PCS322	
			30°	1.5	4	O-PCS323	
Ø4	Ø5	1	20°	2	3.5	O-PCS422	
			30°	1.5	4	O-PCS423	
Ø5	Ø6	1	20°	2	3.5	O-PCS522	
			30°	1.5	4	O-PCS523	

Tips for use

Protective cap:
Ref. HO-CP300/400/500



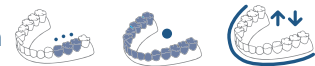
Screwing
30 N.cm
Delivered with 2 main screws
Ref. VIM045



Screwing
30 N.cm
Delivered with 2 secondary screws
Ref. VIMC045

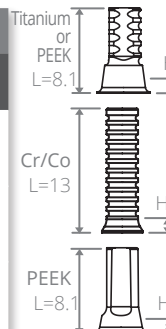
Tips for use Taking impressions for angulated multi-unit abutments Ø3.5 / Ø4 / Ø5 is done using transfer Ref. TDP400 for direct technique or Ref. TIP400 for indirect technique. The model will be cast with an analogue Ref. HP400.

Indication



■ Multi-Unit Abutment Sheath

Ø implant	Hc (mm)	TITANIUM sheath for immediate final prosthesis		PEEK sheath for immediate temporary prosthesis		Cr/Co sheath for screw-retained soldered bar		PEEK Scanbody sheath for multi-unit abutment	
		Product code	Pre-view	Product code	Pre-view	Product code	Pre-view	Product code	Pre-view
Ø3.5	1.2	HO-GCS300		HO-GPCS300		HO-GCR300		HO-GCF300	
Ø4		HO-GCS400		HO-GPCS400		HO-GCR400		HO-GCF400	
Ø5.0		HO-GCS500		HO-GPCS500		HO-GCR400		HO-GCF500	



Technical pattern

Screwing | Manual screwing
30 N.cm | Scanbody only

L=5.4 All sheaths are delivered with 2 screws
Ref. MO-VPC040

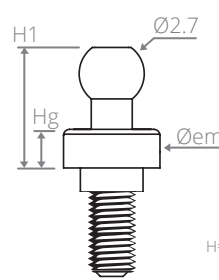
Indication



Special CAD / CAM

Spherical attachment

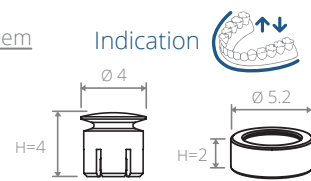
Ø implant	H1 (mm)	Hg (mm)	Type	Product code	Preview
Ø3.5	5	1.5	+ cap	O-ASC350	
	6.5	3	+ cap	O-ASC360	
	5	1.5	+ O-ring	O-ASO350	
	6.5	3	+ O-ring	O-ASO360	
Ø 4	5	1.5	+ cap	O-ASC450	
	6.5	3	+ cap	O-ASC460	
	5	1.5	+ O-ring	O-ASO450	
	6.5	3	+ O-ring	O-ASO460	
Ø 5	5	1.5	+ cap	O-ASC550	
	6.5	3	+ cap	O-ASC560	
	5	1.5	+ O-ring	O-ASO550	
	6.5	3	+ O-ring	O-ASO560	



Technical pattern

Øem: Emergence diameter
H1: Collar height

Indication



Screwing 20 N.cm
Delivered with:
- one titanium cap Ref. ASC100 and spacer rings Ref. PRO100 or
- one O-ring Ref. ASO200

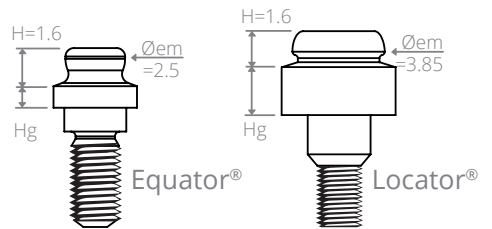
Equator® & Locator® abutment

Ø implant	Hg (mm)	Equator® range		Locator® range	
		Product code	Preview	Product code	Preview
Ø3.5	1	O-EQU310		O-LOC310	
	2	O-EQU320		O-LOC320	
	3	O-EQU330		O-LOC330	
	4	O-EQU340		O-LOC340	
	5	O-EQU350		O-LOC350	
Ø 4	1	O-EQU410		O-LOC410	
	2	O-EQU420		O-LOC420	
	3	O-EQU430		O-LOC430	
	4	O-EQU440		O-LOC440	
	5	O-EQU450		O-LOC450	
Ø 5	1	O-EQU510		O-LOC510	
	2	O-EQU520		O-LOC520	
	3	O-EQU530		O-LOC530	
	4	O-EQU540		O-LOC540	
	5	O-EQU550		O-LOC550	

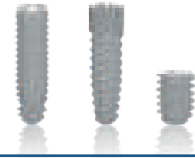
Technical pattern

Øem: Emergence diameter
Hg: Gingival height

Indication

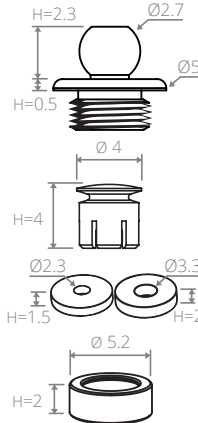


Screwing 20 N.cm



Spherical attachment accessories

Product name	Product code	Preview
Spherical attachment for Angulated Multi-Unit Abutment + Cap + Spacer rings	ASPC100	
Titanium cap + spacer rings	ASC100	
Spacer rings	PRO100	
O-ring	ASO200	
Silicon joint for O-ring (x5)	ASJ200	



Technical pattern

H: Height

Indication



Tips for use

- The spherical attachment for Angulated Multi-Unit Abutment Ref.ASPC100 is compatible with all Multi-Unit Abutments shown on P. 43 [to be ordered separately].

- O-ring Ref.ASO200 is used when the implant axis is straight and the occlusal height is reduced.

- Cap Ref.ASC100 is used when the implant axis needs to be corrected.

- The spacer rings Ref. PRO100 can be resized.

- The O-ring retention joints Ref.ASJ200 should be changed every year.

Equator® abutment accessories

Product name	Strength	Product code	Preview
Equator® pack: cap + retentions	N/A	ASCEQU100 (192ECE)	
Temporary nylon retention joint (x4) black	N/A	ASJEQU100 (140CEN)	
Extra soft RETENTION JOINT (x4) yellow	0.6 kg	ASJEQU200 (140CEG)	
SOFT Retention joint (x4) pink	1.2 kg	ASJEQU300 (140CER)	
STANDARD retention joint (x4) clear	1.6 kg	ASJEQU400 (140CET)	
HIGH Retention joint (x4) violet	2.5 kg	ASJEQU500 (140CEV)	
Equator® multi-function core tool	N/A	A-CEQU100 (485IC)	
Equator® tip for retention extraction	N/A	A-EEQU100 (491EC)	
Equator® tip for torque wrench	N/A	A-MEQ006 772CSF	
Equator® tip for contra-angle	N/A	ETEQ600 (760CE)	

Locator® abutment accessories

Product name	Strength	Product code	Preview
Locator® pack: cap + retentions + spacer ring	N/A	ASCLOC100 (8519)	
Temporary nylon retention joint (x4) black	N/A	ASJLOC100 (8515)	
LIGHT nylon retention joint (x4) red	40° Div max / 0.45 kg	ASJLOC200 (8548)	
STANDARD nylon retention joint (x4) green	40° Div max / 1.81 kg	ASJLOC300 (8547)	
EXTRA LIGHT nylon retention joint (x4) blue	20° Div max / 0.68 kg	ASJLOC400 (8529)	
LIGHT nylon retention joint (x4) pink	20° Div max / 1.36 kg	ASJLOC500 (8527)	
STANDARD nylon retention joint (x4) clear	20° Div Max / 2.27 kg	ASJLOC600 (8524)	
Locator® core tool multi-function 3 in 1	N/A	A-CLOC100 (8393)	
Locator® tip for torque wrench	N/A	A-ECDL100	
Locator® screw tool	N/A	A-MEL100	
Locator® angle measurement gauge	N/A	A-GALOC100 (9530)	
Locator® parallel post for divergence measurement	N/A	A-PALOC100 (8517)	



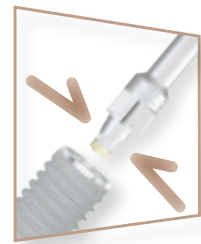
Implant systems with
M Connection
Morse taper &
hexagonal indexing





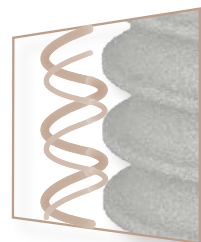
SWISSCLIP TECHNOLOGY

- Clipping system between the implant and the screw tools for contra-angle or for torque wrench
- Gripping and direct positioning of the implant without digital contact
- Real time-saving and high accuracy
- Available for direct technique transfers and for the angulation kit



ASYNCHRONOUS DUAL SCREW THREAD

- Self-tapping rounded macrothreads
- Prevention of cortical bone compression phenomena
- Optimal primary stability



MATERIALS

- **Grade 4 Titanium:** T60 commercially pure
Grade 4 T60 commercially pure titanium meets the requirements of ISO 5832-2 and the American Society for Testing and Materials (ASTM F67 3.7065)

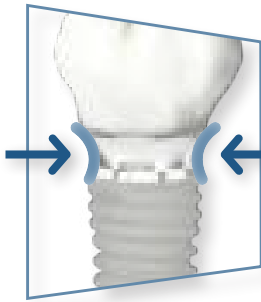


2

2 STAGE IMPLANTS - BONE LEVEL

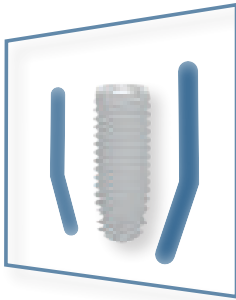
The perfect implant/abutment fit with Platform Switching releases a new biological space for better tissue stability.

PLATFORM SWITCHING



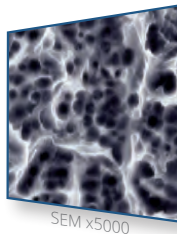
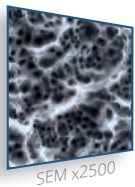
- Gingival ring-shaped sleeve around the implant
- Absolute imperviousness to bacterial attacks
- Reduction of micro-movements and inflammatory infiltration on the peri-implant crestal bone
- Long-lasting aesthetics, bone tissue stability and soft tissue preservation

CCS BIOSHAPE



- Conical cruciform apex with a wide thread diameter
- Cylindrical body to maintain close bone contact
- Spherical collar with a bevelled top to limit bone stress and preserve the crestal bone
- Optimal primary stability and insertion safety

SURFACE TREATMENT



The implants incorporate a sandblasting and hydrofluoric acid-etching surface treatment that promotes the osseointegration process.

ATRAUMATIC APEX



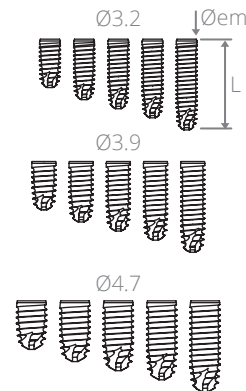
- Apex with atraumatic convexity
- Ideal for sinus lifts
- Self-tapping claw



IMPLANT SURGERY & MANAGEMENT OF GINGIVAL TISSUES

Dental implant range M - Family: M

Diameter (mm) \ Length (mm)	Platform Ø3.2 mm	Platform Ø3.9 mm	Platform Ø4.7 mm	Preview
8 mm	M308	M408	M508	
10 mm	M310	M410	M510	
11.5 mm	M311	M411	M511	
13 mm	M313	M413	M513	
15 mm	M315	M415	M515	



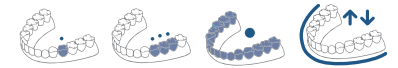
Technical pattern

Øem: Emergence diameter
L: Length



Delivered with a cover screw

Indication

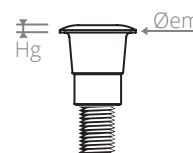


Colour code

● Ø3.2 ● Ø3.9 ● Ø4.7

Cover screw

Ø implant	Øem (mm)	Hg (mm)	Product code	Preview
Ø3.2	Ø2.9	0.3	M-VIO350	
Ø3.9	Ø3.1		M-VIO400	
Ø4.7	Ø3.6		M-VIO500	



Technical pattern

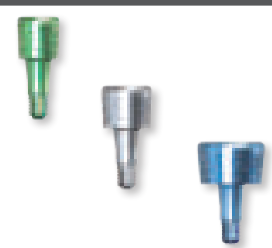
Øem: Emergence diameter

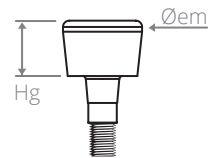


Colour code

● Ø3.2 ● Ø3.9 ● Ø4.7

■ Narrow healing screw

Ø implant	Øem (mm)	Hg (mm)	Product code	Preview
Ø3.2	Ø3.5	3.5	M-VTS330	
Ø3.9	Ø4.2		M-VTS430	
Ø4.7	Ø5.6		M-VTS530	



Technical pattern
 Øem: Emergence diameter
 Hg: Gingival height

 Manual screwing

Colour code
 ● Ø3.2 ● Ø3.9 ● Ø4.7

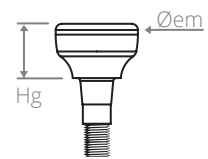


Tips for use

The narrow healing screw is useful in the case of an interdental space not allowing the use of standard screws.

■ Regular and wide healing screws

Ø implant	Øem (mm)	Hg (mm)	Product code	Preview
Ø3.2	Ø4.55	3.5	M-VT330	
		5	M-VT350	
		7	M-VT370	
Ø3.9	Ø6	3.5	M-VTL330	
		5	M-VTL350	
		7	M-VTL370	
	Ø5.3	3.5	M-VT430	
		5	M-VT450	
		7	M-VT470	
Ø4.7	Ø6.3	3.5	M-VTL430	
		5	M-VTL450	
		7	M-VTL470	
	Ø7.3	3.5	M-VT530	
		5	M-VT550	
		7	M-VT570	
		3.5	M-VTL530	
		5	M-VTL550	



Technical pattern
 Øem: Emergence diameter
 Hg: Gingival height

 Manual screwing

Colour code
 ● Ø3.2 ● Ø3.9 ● Ø4.7



Tips for use

The wide healing screw is useful in the case of a gingival preparation for receiving a large crown (e.g. posterior sector) and to facilitate the installation of the impression transfer.



COMPONENTS FOR THE IMPRESSION-TAKING AND MASTER CAST-MAKING

■ Impression Transfer - Direct Technique "Pick-up"

Ø implant	Øem (mm)	Hr (mm)	Hc (mm)	Product code	Preview
Ø3.2	Ø4.25	1.5	2.5	M-TDS300	
		1.5		M-TD300	
		2.5		M-TD350	
Ø3.9	Ø5	1.5		M-TD400	
		2.5		M-TD450	
Ø4.7	Ø6	1.5		M-TD500	
		2.5	M-TD550		

Technical pattern
 Hc: Cylindrical height
 Øem: Emergence diameter
 Hr: Radial height

Manual screwing
 Delivered with a screw Ref. VTD186

Indication

Colour code ● Ø3.2 ● Ø3.9 ● Ø4.7

Tips for use M-TDS300 for an M-MTS310 / 311 / 312 abutment. M-TD350 / 450 / 550 for abutments with 3 and 5 mm shoulder.

■ Impression Transfer - Indirect Technique "Pop-in"

Ø implant	Øem (mm)	Hr (mm)	Hc (mm)	Product code	Preview
Ø3.2	Ø4.25	1.5	2.5	M-TI300	
		2.5		M-TI350	
Ø3.9	Ø5	1.5		M-TI400	
		2.5		M-TI450	
Ø4.7	Ø6	1.5		M-TI500	
		2.5		M-TI550	

Technical pattern
 Hc: Cylindrical height
 Øem: Emergence diameter
 Hr: Radial height

Manual screwing
 Delivered with a screw Ref. VTI157

Indication

Colour code ● Ø3.2 ● Ø3.9 ● Ø4.7

Tips for use M-TI350 / 450 / 550 for abutments with 3 and 5 mm shoulder.

■ Impression Transfer - Direct Technique "SwissClip"

Ø implant	Øem (mm)	Hr (mm)	Hc (mm)	Product code	Preview
Ø3.2	Ø4.25	1.5	2.5	M-TDC300	
Ø3.9	Ø5			M-TDC400	
Ø4.7	Ø6			M-TDC500	

Technical pattern
 Hc: Cylindrical height
 Øem: Emergence diameter
 Hr: Radial height

Indication

Colour code ● Ø3.2 ● Ø3.9 ● Ø4.7

Tips for use Optimal use when the implant axis is straight.

■ Impression Transfer - Direct Technique for Multi-Unit Abutment

Ø implant	Øem (mm)	Hc (mm)	Product code	Preview
Ø3.2	Ø4.25	3	HO-TDP300	
Ø3.9	Ø5		TDP400	
Ø4.7	Ø6		TDP500	

Technical pattern
 Hc: Cylindrical height
 Øem: Emergence diameter

Manual screwing
 Delivered with a screw Ref. VTD098

Indication

Colour code ● Ø3.2 ● Ø3.9 ● Ø4.7

■ Impression Transfer - Indirect Technique for Multi-Unit Abutment

Ø implant	Øem (mm)	Hc (mm)	Product code	Preview
Ø3.2	Ø4.25	3	HO-TIP300	
Ø3.9	Ø5		TIP400	
Ø4.7	Ø6		TIP500	

Technical pattern
 Hc: Cylindrical height
 Øem: Emergence diameter

Manual screwing
 Delivered with a screw Ref. VTI088

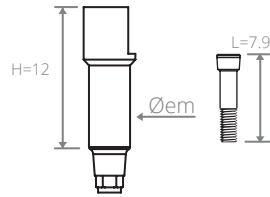
Indication

Colour code ● Ø3.2 ● Ø3.9 ● Ø4.7



Scanbody - Digital transfer

Ø implant	Øem (mm)	Product code	Preview
Ø3.2	Ø3.5	M-SCN300	
Ø3.9		M-SCN400	
Ø4.7		M-SCN500	



Technical pattern

H: PEEK part height
Øem: Emergence diameter

Special CAD / CAM

Manual screwing
Delivered with a screw Ref. VIM064

Indication

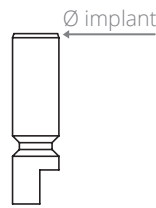
Colour code ● Ø3.2 ● Ø3.9 ● Ø4.7

For multi-unit abutment restorations, use the PEEK scanbodies sheaths provided for this purpose (P43).

Tips for use

Implant analogue

Ø implant	Product code	Preview
Ø3.2	M-RL300	
Ø3.9	M-RL400	
Ø4.7	M-RL500	



Technical pattern

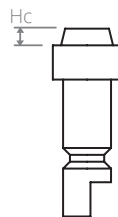
Ø implant: Implant platform diameter

Indication

Colour code ● Ø3.2 ● Ø3.9 ● Ø4.7

Multi-unit abutment analogue

Ø implant	Hc	Product code	Preview
Ø3.2	1	HO-HPS300	
Ø3.9		HPS400	
Ø4.7		HPS500	



Technical pattern

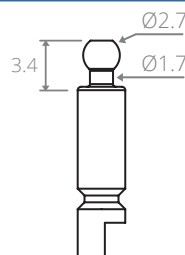
Ø implant: Implant platform diameter
Hc: Cone height (replica of the multi-unit abutment)

Indication

Colour code ● Ø3.2 ● Ø3.9 ● Ø4.7

Spherical attachment analogue

Ø implant	Product code	Preview
Ø3.2 Ø3.9 Ø4.7	HAS001	



Technical pattern

Compatible with cap or O-ring retention systems

Indication

Equator® abutment analogue

Ø implant	Product code	Preview
Ø3.5 Ø4 Ø5	HEQU000 (144AE)	

Equator® abutment transfer

Ø implant	Product code	Preview
Ø3.5 Ø4 Ø5	TEQU200 (x2) (044CAIN)	

Locator® abutment analogue

Ø implant	Product code	Preview
Ø3.5 Ø4	HLOC400 (8530)	
Ø5	HLOC500 (8516)	

Locator® abutment transfer

Ø implant	Product code	Preview
Ø3.5 Ø4 Ø5	TDLOC100 (8505)	

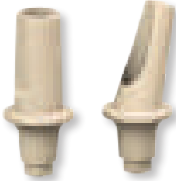
Standard prosthetic solutions

Cemented prosthesis

Titanium final abutment



PEEK temporary abutment



Non-rotational overflow ring + Castable sheath



Screw-retained prosthesis

Non-rotational overflow ring + Castable sheath



Straight or angulated multi-unit abutment + Castable sheath



Secondary elements

PEEK sheath for immediate temporary prosthesis



Titanium sheath for immediate final prosthesis



Cr/Co sheath for soldered bar



Customised prosthetic solutions

Additional parts for CAD / CAM use

CEREC®-compatible Ti-base



Non-rotational Ti-base



Rotational Ti-base





GENERAL PROSTHETIC SYNOPSIS

Removable prosthesis

Secondary elements

Retention, accessories and instrumentation



Retention, accessories and instrumentation



Spherical attachment + Cap or O-ring



Equator® abutment



Locator® abutment



Straight or angulated multi-unit abutment + Castable sheath



Caption and comments



SINGLE-UNIT FIXED RESTORATION



FULL-ARCH FIXED RESTORATION



2 STAGE IMPLANT BONE LEVEL



COMPONENT THAT CAN BE USED BY YOUR CAD / CAM SYSTEM



MULTIPLE-UNIT FIXED RESTORATION



REMOVABLE RESTORATION



REFER TO THE SPECIFIED PAGES



RECOMMENDED TIGHTENING TORQUE



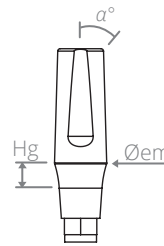
The final prosthetic components are gradually being delivered with 2 screws:
- 1 laboratory screw,
- 1 final screw.



FIXED CEMENTED PROSTHESIS SOLUTIONS

Narrow titanium final abutment

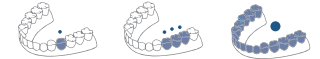
Ø implant	Øem (mm)	α°	Hg (mm)	Product code	Preview
Ø3.2	Ø3.2	0°	1.5	M-MTS310	
		15°		M-MTS311	
		25°		M-MTS312	



Technical pattern

Screwing 30 N.cm
Delivered with 2 screws Ref. VIM064

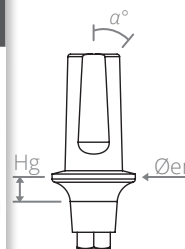
Indication



Tips for use Narrow abutments Ref. M-MTS 310 / 311 / 312 are indicated in the case of reduced interdental space [e.g. central mandibular incisors]

PEEK temporary abutment

Ø implant	Øem (mm)	α°	Hg (mm)	Product code	Preview
Ø3.2	Ø4.25	0°	1.5	M-MP300	
		15°		M-MP301	
Ø3.9	Ø5	0°	1.5	M-MP400	
		15°		M-MP401	
Ø4.7	Ø6	0°	1.5	M-MP500	
		15°		M-MP501	



Technical pattern

Screwing 30 N.cm
Delivered with a screw Ref. VIM064

Indication



Titanium final abutment

Ø implant	Øem (mm)	α°	Hg (mm)	Product code	Preview
Ø3.2	Ø4.25	0°	0.7	M-MT300	
			1.5	M-MT310	
			3	M-MT330	
			5	M-MT350	
		15°	0.7	M-MT301	
			1.5	M-MT311	
			3	M-MT331	
			5	M-MT351	
		25°	0.7	M-MT302	
			1.5	M-MT312	
			3	M-MT332	
			5	M-MT352	
Ø3.9	Ø5	0°	0.7	M-MT400	
			1.5	M-MT410	
			3	M-MT430	
			5	M-MT450	
		15°	0.7	M-MT401	
			1.5	M-MT411	
			3	M-MT431	
			5	M-MT451	
		25°	0.7	M-MT402	
			1.5	M-MT412	
			3	M-MT432	
			5	M-MT452	

Technical pattern

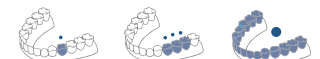
Hg: Gingival height
Øem: Emergence diameter
α°: Angulation



OR Screwing 30 N.cm

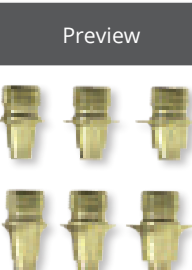

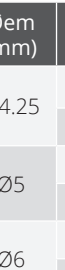
Delivered with 2 titanium abutment screws Ref. VIM051 if Hg < or = 0.7 mm
or one titanium abutment screw Ref. VIM064 if Hg > or = 1.5 mm

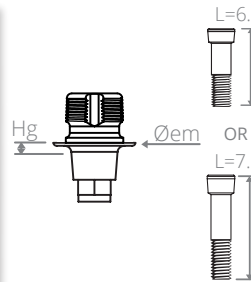
Indication



Ø implant	Øem (mm)	α°	Hg (mm)	Product code	Preview
Ø4.7	Ø6	0°	0.7	M-MT500	
			1.5	M-MT510	
			3	M-MT530	
			5	M-MT550	
		15°	0.7	M-MT501	
			1.5	M-MT511	
			3	M-MT531	
			5	M-MT551	
		25°	0.7	M-MT502	
			1.5	M-MT512	
			3	M-MT532	
			5	M-MT552	

Non-rotational Ti-base / connection base

Ø implant	Øem (mm)	Hg (mm)	Product code	Preview
Ø3.2	Ø4.25	0.7	M-BAS307	
		1.5	M-BAS310	
Ø3.9	Ø5	0.7	M-BAS407	
		1.5	M-BAS410	
Ø4.7	Ø6	0.7	M-BAS507	
		1.5	M-BAS510	




Technical pattern
 Hg: Gingival height
 Øem: Emergence diameter

Special CAD / CAM

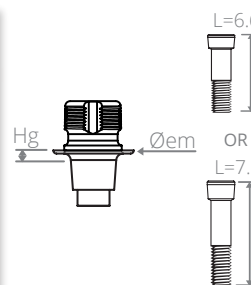
Indication

Screwing 30 N.cm
 Delivered with 2 screws Ref. VIM051 if Hg = 0.7 mm or Ref. VIM064 if Hg = 1.5 mm



Rotational Ti-base / connection base

Ø implant	Øem (mm)	Hg (mm)	Product code	Preview
Ø3.2	Ø4.25	0.7	M-BASR307	
		1.5	M-BASR310	
Ø3.9	Ø5	0.7	M-BASR407	
		1.5	M-BASR410	
Ø4.7	Ø6	0.7	M-BASR507	
		1.5	M-BASR510	




Technical pattern
 Hg: Gingival height
 Øem: Emergence diameter

Special CAD / CAM

Indication

Screwing 30 N.cm
 Delivered with 2 screws Ref. VIM051 if Hg = 0.7 mm or Ref. VIM064 if Hg = 1.5 mm



CEREC®-compatible Ti-base


Ø Im-plant	Gingival height (mm)			Block S	Ø Shldr*S	Block L	Ø Shldr*L	Preview
	0.7	1.5	3.0					
Ø3.2	M-TBSS307 ⁽¹⁾	M-TBSS310 ⁽¹⁾	M-TBSS330 ⁽¹⁾	FX 3.4 S	Ø3.9	N/A	N/A	 Emergence Ø4.4 mm
	M-TBS307	M-TBS310	M-TBS330	N/A	N/A	AT OS 3.5/4.0	Ø4.4	
Ø3.9	M-TBS407	M-TBS410	M-TBS430	N/A	N/A	AT OS 3.5/4.0	Ø4.4	 Emergence Ø4.4 mm
	M-TBS407	M-TBS410	M-TBS430	N/A	N/A	AT OS 3.5/4.0	Ø4.4	
Ø4.7	M-TBS507	M-TBS510	M-TBS530	N/A	N/A	AT OS 4.5/5.0	Ø5.0	 Emergence Ø5 mm
	M-TBS507	M-TBS510	M-TBS530	N/A	N/A	AT OS 4.5/5.0	Ø5.0	

Tips for use

The CEREC®-compatible Ti-bases are used with SIRONA® scanbodies:

 Product code for **Omniscam**
6431311 block S
6431329 block L

 Product code for **Bluecam**
6431295 block S
6431303 block L




Technical pattern
 Hg: Gingival height
 Øem: Emergence diameter

Special CAD / CAM

Indication

Screwing 30 N.cm
 Delivered with 2 screws Ref. VIM051 if Hg = 0.7 mm or Ref. VIM064 if Hg = 1.5 mm



(*) Shoulder

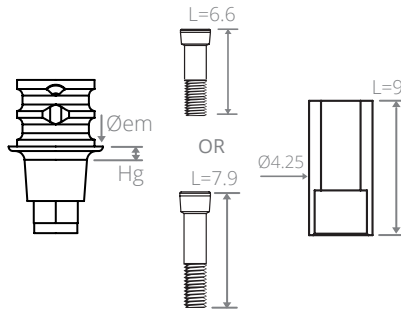
(1) These references require "S" blocks, unlike the others which use "L" blocks.



FIXED SCREW-RETAINED PROSTHESIS SOLUTIONS

■ Non-rotational Cr/Co screw-retained overflow ring

Ø implant	Øem (mm)	Hg (mm)	Product code	Preview
Ø3.2	Ø4.25	0.7	M-MS307	
		1.5	M-MS300	
Ø3.9	Ø4.25	0.7	M-MS407	
		1.5	M-MS400	
Ø4.7	Ø5	0.7	M-MS507	
		1.5	M-MS500	



Technical pattern

Øem: Emergence diameter
Delivered with a castable sheath Ref. GS930

Indication



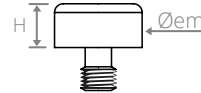
Tips for use

The overflow rings can also be used for cemented rehabilitation.

Screwing 30 N.cm
Delivered with 2 screws
Ref. VIM051 if Hg = 0.7 mm
or
Ref. VIM064 if Hg = 1.5 mm

■ Protective cap for Multi-Unit Abutment

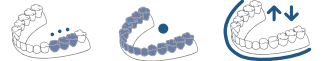
Ø implant	Øem (mm)	Hc (mm)	Product code	Preview
Ø3.5	Ø4.25	2.5	HO-CP300	
Ø4	Ø5		HO-CP400	
Ø5	Ø6		HO-CP500	



Technical pattern

Øem: Emergence diameter
H: Height

Indication



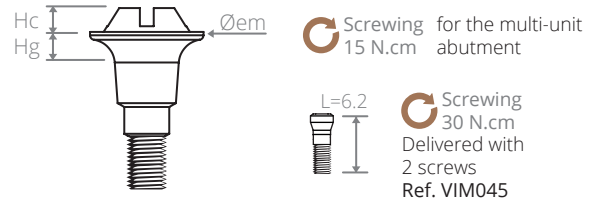
Colour code

● Ø3.2 ● Ø3.9 ● Ø4.7

Screwing 15 N.cm

Straight Multi-Unit Abutment

Ø implant	Øem (mm)	Hc (mm)	Hg (mm)	Product code	Preview
Ø3.2	Ø4.25	0.7		M-PCS307	
		1.5		M-PCS310	
		3		M-PCS330	
Ø3.9	Ø5	0.7		M-PCS407	
		1.5		M-PCS410	
		3		M-PCS430	
Ø4.7	Ø6	0.7		M-PCS507	
		1.5		M-PCS510	
		3		M-PCS530	

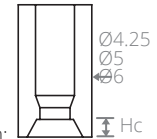


Technical pattern

Øem: Emergence diameter
 Hc: Cone height
 Hg: Gingival height
 Hg1: Min gingival height
 Hg2: Max gingival height

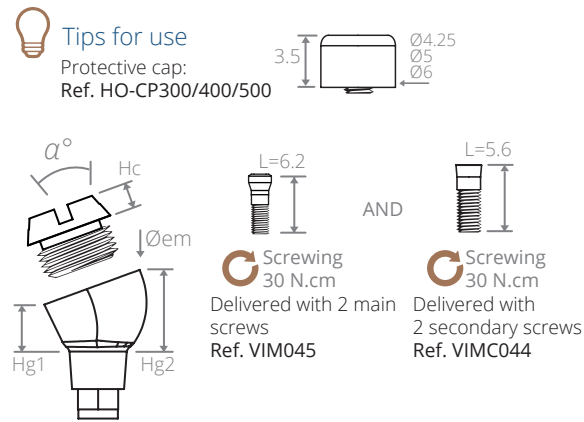
The straight multi-unit abutments are delivered with a castable sheath: Ref. GP004/005/006.

Ref. GP004
 GP005
 GP006

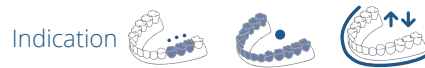


Angulated Multi-Unit Abutment

Ø implant	Øem (mm)	α°	Hg 1 (mm)	Hg 2 (mm)	Hc (mm)	Product code	Preview
Ø3.2		20°	2	3.5	1	M-PCS322	
		30°	1.5	4		M-PCS323	
Ø3.9	Ø5	20°	2	3.5	1	M-PCS422	
		30°	1.5	4		M-PCS423	
Ø4.7		20°	2	3.5	1	M-PCS522	
		30°	1.5	4		M-PCS523	

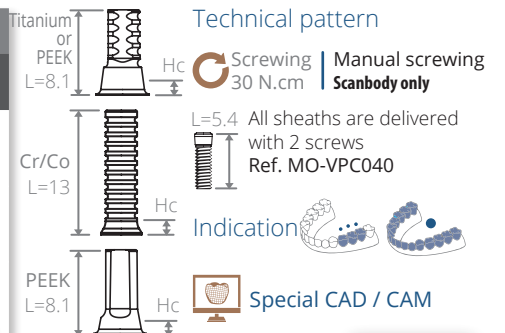


Tips for use Taking impressions for Angulated Multi-Unit Abutments Ø3.2 / Ø3.9 / Ø4.7 is done using transfer Ref. TDP400 for direct technique or Ref. TIP400 for indirect technique. The model will be cast with an analogue Ref. HP400.



Multi-Unit Abutment Sheath

Ø implant	Hc (mm)	TITANIUM sheath for immediate final prosthesis		PEEK sheath for immediate temporary prosthesis		Cr/Co sheath for screw-retained soldered bar		PEEK Scanbody sheath for multi-unit abutment	
		Product code	Pre-view	Product code	Pre-view	Product code	Pre-view	Product code	Pre-view
Ø3.2	1.2	HO-GCS300		HO-GPCS300		HO-GCR300		HO-GCF300	
Ø3.9		HO-GCS400		HO-GPCS400		HO-GCR400		HO-GCF400	
Ø4.7		HO-GCS500		HO-GPCS500		HO-GCR400		HO-GCF500	

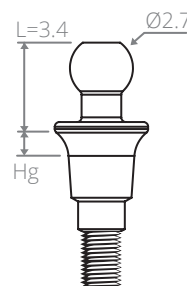




STABILISATION OF REMOVABLE PROSTHESIS SOLUTIONS

Spherical attachment

Ø implant	Hg (mm)	Type	Product code	Preview
Ø3.2	1.5	+ cap	M-ASC350	
		+ O-ring	M-ASO350	
Ø3.9		+ cap	M-ASC450	
		+ O-ring	M-ASO450	
Ø4.7		+ cap	M-ASC550	
		+ O-ring	M-ASO550	

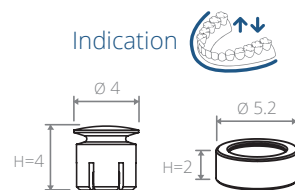


Technical pattern

Øem: Emergence diameter
Hg: Gingival height

Screwing 20 N.cm
Delivered with:
- one titanium cap Ref. ASC100 and spacer rings Ref. PRO100 or
- one O-ring Ref. ASO200

Indication



Equator® & Locator® abutment

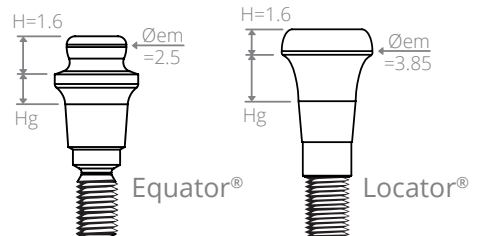
Ø implant	Hg (mm)	Equator® range		Locator® range	
		Product code	Preview	Product code	Preview
Ø3.2	1	M-EQU310		M-LOC310	
	2	M-EQU320		M-LOC320	
	3	M-EQU330		M-LOC330	
	4	M-EQU340		M-LOC340	
	5	M-EQU350		M-LOC350	
Ø 3.9	1	M-EQU410		M-LOC410	
	2	M-EQU420		M-LOC420	
	3	M-EQU430		M-LOC430	
	4	M-EQU440		M-LOC440	
	5	M-EQU450		M-LOC450	
Ø 4.7	1	M-EQU510		M-LOC510	
	2	M-EQU520		M-LOC520	
	3	M-EQU530		M-LOC530	
	4	M-EQU540		M-LOC540	
	5	M-EQU550		M-LOC550	

Technical pattern






Øem: Emergence diameter
Hg: Gingival height

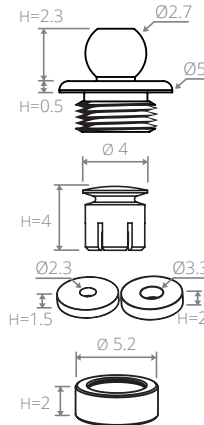
Screwing 20 N.cm

Indication



■ Spherical attachment accessories

Product name	Product code	Preview
Spherical attachment for Angulated Multi-Unit Abutment + Cap + Spacer rings	ASPC100	
Titanium cap + spacer rings	ASC100	
Spacer rings	PRO100	
O-ring	ASO200	
Silicon joint for O-ring (x5)	ASJ200	



Technical pattern

H: Height

Indication



Tips for use

- The spherical attachment for Angulated Multi-Unit Abutment Ref.ASPC100 is compatible with all Multi-Unit Abutments shown on P. 43 [to be ordered separately].

- O-ring Ref.ASO200 is used when the implant axis is straight and the occlusal height is reduced.

- Cap Ref.ASC100 is used when the implant axis needs to be corrected.

- The spacer rings Ref. PRO100 can be resized.

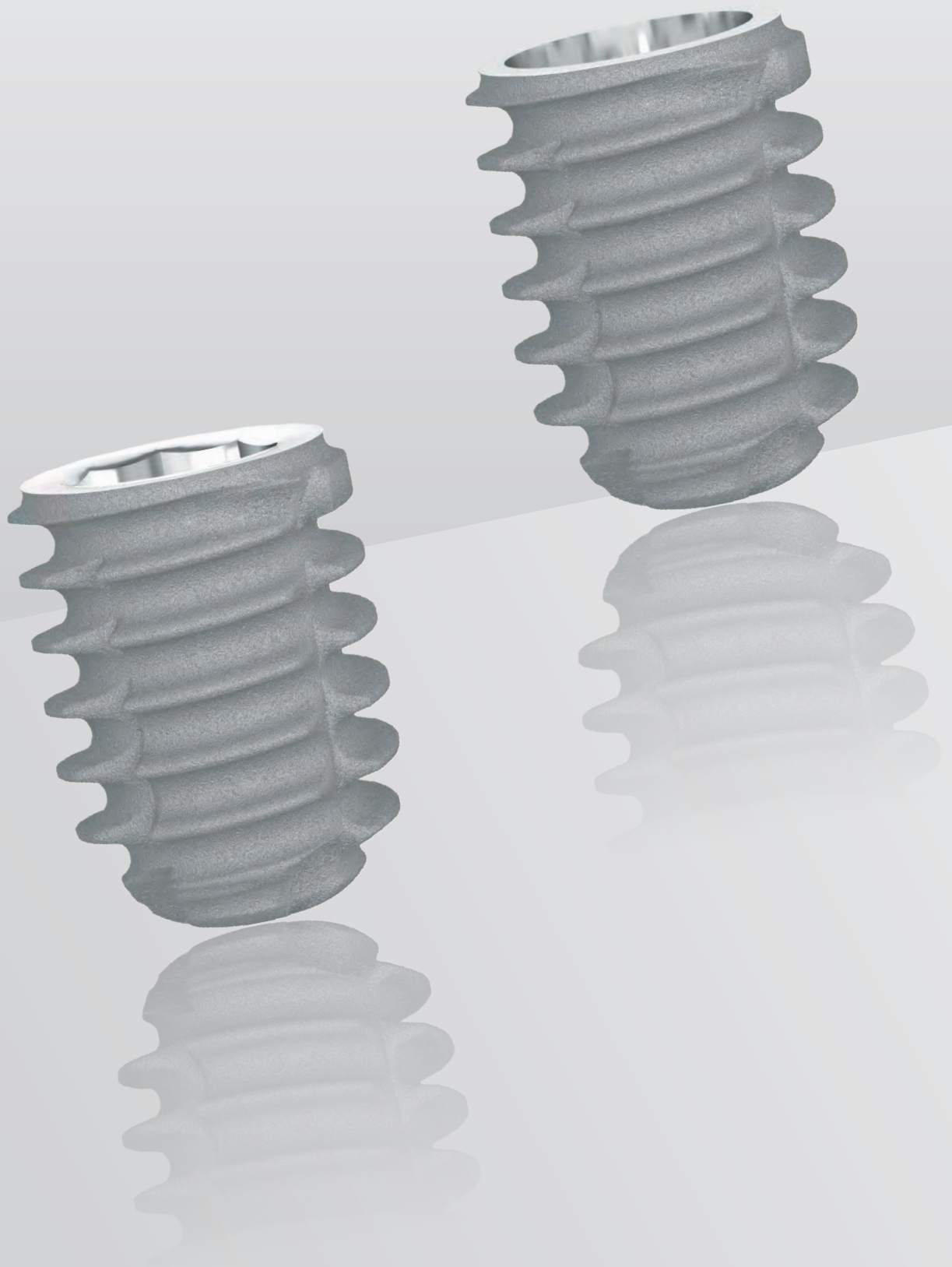
- The O-ring retention joints Ref.ASJ200 should be changed every year.

■ Equator® abutment accessories

Product name	Strength	Product code	Preview
Equator® pack: cap + retentions	N/A	ASCEQU100 (192ECE)	
Temporary nylon retention joint (x4) black	N/A	ASJEQU100 (140CEN)	
Extra soft RETENTION JOINT (x4) yellow	0.6 kg	ASJEQU200 (140CEG)	
SOFT Retention joint (x4) pink	1.2 kg	ASJEQU300 (140CER)	
STANDARD retention joint (x4) clear	1.6 kg	ASJEQU400 (140CET)	
HIGH Retention joint (x4) violet	2.5 kg	ASJEQU500 (140CEV)	
Equator® multi-function core tool	N/A	A-CEQU100 (485IC)	
Equator® tip for retention extraction	N/A	A-EEQU100 (491EC)	
Equator® tip for torque wrench	N/A	A-MEQ006 772CSF	
Equator® tip for contra-angle	N/A	ETEQ600 (760CE)	

■ Locator® abutment accessories

Product name	Strength	Product code	Preview
Locator® pack: cap + retentions + spacer ring	N/A	ASCLOC100 (8519)	
Temporary nylon retention joint (x4) black	N/A	ASJLOC100 (8515)	
LIGHT nylon retention joint (x4) red	40° Div max / 0.45 kg	ASJLOC200 (8548)	
STANDARD nylon retention joint (x4) green	40° Div max / 1.81 kg	ASJLOC300 (8547)	
EXTRA LIGHT nylon retention joint (x4) blue	20° Div max / 0.68 kg	ASJLOC400 (8529)	
LIGHT nylon retention joint (x4) pink	20° Div max / 1.36 kg	ASJLOC500 (8527)	
STANDARD nylon retention joint (x4) clear	20° Div Max / 2.27 kg	ASJLOC600 (8524)	
Locator® core tool multi-function 3 in 1	N/A	A-CLOC100 (8393)	
Locator® tip for torque wrench	N/A	A-ECDL100	
Locator® screw tool	N/A	A-MEL100	
Locator® angle measurement gauge	N/A	A-GALOC100 (9530)	
Locator® parallel post for divergence measurement	N/A	A-PALOC100 (8517)	



B a b y

Implant Systems
adapted to
specific anatomical
requirements

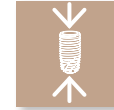




Baby-M

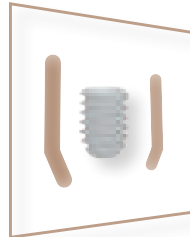
6 MM SHORT IMPLANTS - MORSE TAPER CONNECTION

Baby M implants with a Morse taper connection combine the benefits of the Platform Switching technique with a reduced height of 6 mm.



CYLINDRICAL BIOSHAPE

- Cylindrical body to maintain close bone contact
- Slightly conical atraumatic cruciform apex with a wide thread diameter
- Optimal primary stability and insertion safety



ASYNCHRONOUS DUAL SCREW THREAD

- Self-tapping rounded macrothreads
- Prevention of cortical bone compression phenomena
- Optimal primary stability



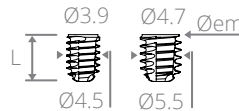
MATERIALS

- **Grade 4 Titanium:** T60 commercially pure Grade 4 T60 commercially pure titanium meets the requirements of ISO 5832-2 and the American Society for Testing and Materials (ASTM F67 3.7065)



Dental implant range M - Family: Baby M

Diameter (mm) \ Length (mm)	Implant Ø3.9 mm	Implant Ø4.7 mm	Preview
	6 mm	MS406	



Technical pattern

Øem: Emergence diameter
L: Length

Delivered with a cover screw



Indication



Colour code

• Ø4 • Ø5

Specific instrumentation for Baby M

Product name	Product code	Preview
Complete Baby M surgical mini-kit	A-TF002	
Baby M stainless steel surgical box	A-COF005	
Pointer drill with external irrigation L = 4 mm	A-FPT310	
Baby M stop drill No. 1 with external irrigation L = 6 mm	A-FBC100	
Baby M stop drill No. 2 with external irrigation L = 6 mm	A-FBC200	
Baby M stop drill No. 3 with external irrigation L = 6 mm	A-FBC300	
Baby M stop drill No. 4 with external irrigation L = 6 mm	A-FBC400	
Baby M stop drill No. 5 with external irrigation L = 6 mm	A-FBC500	
Short SwissClip screw tool for contra-angle Range M	A-MCA222	
Short hexagonal screwdriver - L = 10.5 mm	A-CHC216	

Prosthetic solutions for Baby M



Tips for use

The stages of healing and impression taking and all the prosthetic solutions for Baby M implants are identical to those for the other implants in the M range.



Baby 8

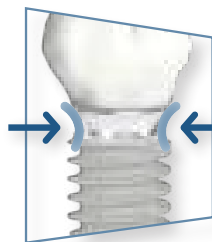


6 MM SHORT IMPLANTS - OCTAGONAL CONNECTION

The use of Baby 8 implants with an octagonal connection offers the advantages of reducing the number of surgical procedures and respecting the integrity of the periodontium.

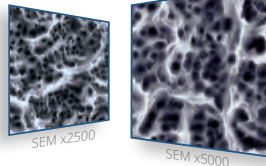


PLATFORM SWITCHING



- Gingival ring-shaped sleeve around the implant
- Absolute imperviousness to bacterial attacks
- Reduction of micro-movements and inflammatory infiltration on the peri-implant crestal bone
- Long-lasting aesthetics, bone tissue stability and soft tissue preservation

SURFACE TREATMENT



The implants incorporate a sand-blasting and hydrofluoric acid-etching surface treatment that promotes the osseointegration process.

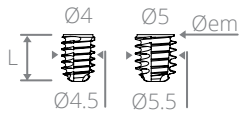
ATRAUMATIC APEX



- Apex with atraumatic convexity
- Ideal for sinus lifts
- Self-tapping claw

Dental implant range 8 - Family: Baby 8

Diameter (mm) \ Length (mm)	Implant		Preview
	Ø4 mm	Ø5 mm	
6 mm	XS406	XS506	



Technical pattern

Øem: Emergence diameter
L: Length



Delivered with a cover screw

Indication



Colour code

● Ø4 ● Ø5

Specific instrumentation for Baby 8

Product name	Product code	Preview
Complete Baby 8 surgical mini-kit	A-TF001	
Baby 8 stainless steel surgical box	A-COF005	
Pointer drill with external irrigation L = 4 mm	A-FPT310	
Baby 8 stop drill No. 1 with external irrigation L = 6 mm	A-FBC100	
Baby 8 stop drill No. 2 with external irrigation L = 6 mm	A-FBC200	
Baby 8 stop drill No. 3 with external irrigation L = 6 mm	A-FBC300	
Baby 8 Stop drill No. 4 with external irrigation L = 6 mm	A-FBC400	
Baby 8 Stop drill No. 5 with external irrigation L = 6 mm	A-FBC500	
Short SwissClip screw tool for contra-angle Range 8	A-MCA230	
Short hexagonal screwdriver - L = 10.5 mm	A-CHC216	

Prosthetic solutions for Baby 8



Tips for use

The stages of healing and impression taking and all the prosthetic solutions for Baby 8 implants are identical to those for the other implants in the 8 range.





Instrumentation & Accessories

8 Connection / M Connection





INSTRUMENTATION & ACCESSORIES



Surgical kit

All the essential elements for your implant surgery practice are gathered in the surgical kit depending on the system you have chosen: M, 8 or infinity.

Ergonomic

A compact and complete kit design.

Easy-to-use

Components available in different sizes to suit all clinical cases.

Safety

Easy to clean and steam sterilisable.



- 2 Pointer drill
- 3 Stop drill No. 1
Choose drill depending on implant length
- 4 Drill No. 2 intermediate
- 5 Drilling sequence according to the diameter of the implant to be fitted
- 6 Screw taps

7 Short and long screw tools for torque wrench

8 Short and long screw tools for contra-angle

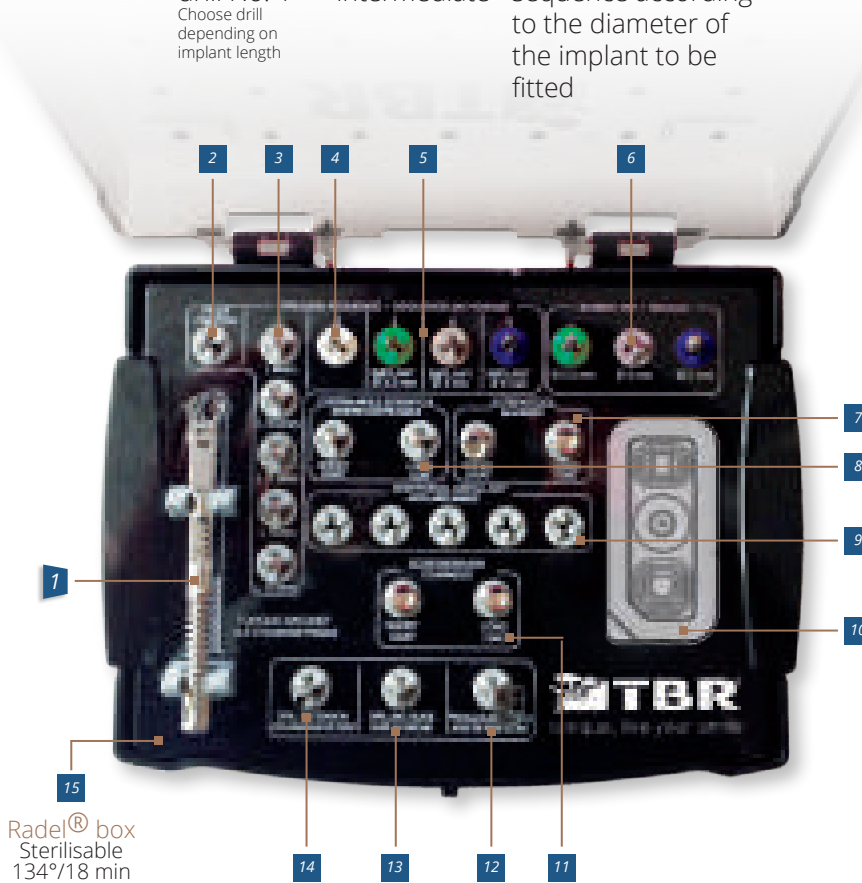
9 Empty spaces for additional ancillary parts

10 Location to stabilise the internal blister

11 Short and long hexagonal screwdrivers

7 Torque wrench

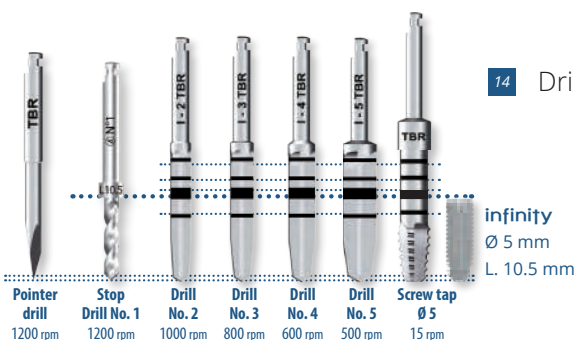
Dual function



Radel® box
Sterilisable
134°/18 min

Tips for use

The TBR implants are inserted following a unique and simple drilling protocol, see example opposite.



M Ref. A-TCP008 - M implants

8 Ref. A-TCP006 - 8 implants

8 Ref. A-TCP009 - infinity implants



Removable stop drill kit

In addition to your surgical kit for implants with octagonal or Morse taper connections, you now have a box with 4 drills and 20 removable stops.

Reliable drilling sequence

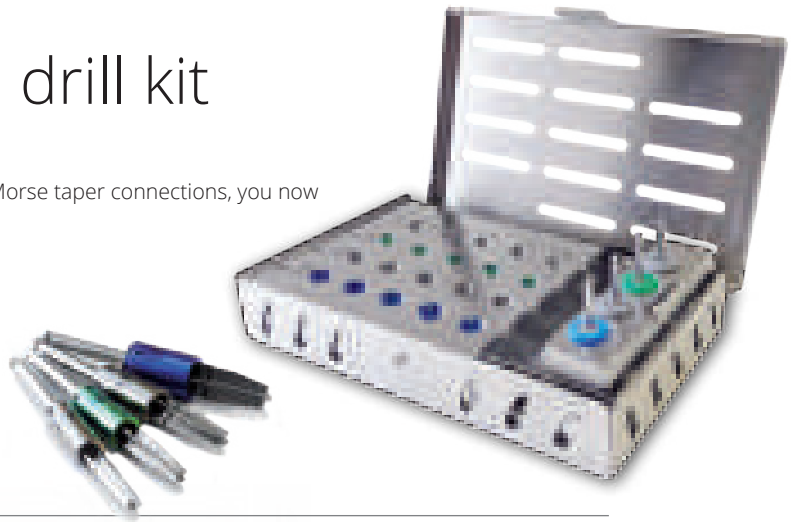
The stop prevents the drill from reaching the wrong depth.

Friction retention system

The specific drills fit the stops simply by clipping.

Safety

Easy to clean and steam sterilisable.



1 Laser marking of the implant range

2 Choice of implant length

3 Drill No. 2 intermediate

6 Sequence of removable stops to use

4 Drilling sequence according to the diameter of the implant to be fitted

5 Surgical stainless steel box
Sterilisable
134°/18 min

M Ref. A-TF004
M implants

8 Ref. A-TF003
8 implants

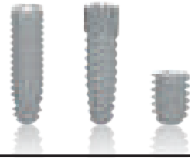
∞ Ref. A-TF005
infinity implants

Refill for removable stop drill kit

Product name	Kit M	Kit 8	Kit infinity	Product code	Preview
Removable stop drill No. 2 - M	✓			A-FMB200	
Removable stop drill No. 3 - M	✓			A-FMB300	
Removable stop drill No. 4 - M	✓			A-FMB400	
Removable stop drill No. 5 - M	✓			A-FMB500	
Removable stop drill No. 2 - 8		✓		A-FCB200	
Removable stop drill No. 3 - 8		✓		A-FCB300	
Removable stop drill No. 4 - 8		✓		A-FCB400	
Removable stop drill No. 5 - 8		✓		A-FCB500	
Removable stop drill No. 2 - infinity			✓	A-FIB200	
Removable stop drill No. 3 - infinity			✓	A-FIB300	
Removable stop drill No. 4 - infinity			✓	A-FIB400	
Removable stop drill No. 5 - infinity			✓	A-FIB500	
Pack of removable stops for drill No. 2 - 8		✓	✓	A-PCB200	
Pack of removable stops for drill No. 3 - 8		✓	✓	A-PCB300	
Pack of removable stops for drill No. 4 - 8		✓	✓	A-PCB400	
Pack of removable stops for drill No. 5 - 8		✓	✓	A-PCB500	
Pack of removable stops for drill No. 2 - M	✓			A-PMB200	
Pack of removable stops for drill No. 3 - M	✓			A-PMB300	
Pack of removable stops for drill No. 4 - M	✓			A-PMB400	
Pack of removable stops for drill No. 5 - M	✓			A-PMB500	

■ Surgical instrumentation

Product name	Kit 	Kit 	Kit infinity	Product code	Preview
Complete surgical kit - M range	✓			A-TCP008	
Radel surgical box - M range	✓			A-COF006	
Complete surgical kit - 8 range		✓		A-TCP006	
Radel surgical box - 8 range		✓		A-COF004-8	
Complete surgical kit - Infinity range			✓	A-TCP009	
Radel surgical box - Infinity range			✓	A-COF004-I	
Pointer drill with external irrigation L = 4 mm	✓	✓	✓	A-FPT310	
Stop drill No. 1 with external irrigation Range 8 & M - L = 8 mm	✓	✓	✓	A-FBX080	
Stop drill No. 1 with external irrigation Range M - L = 10 mm	✓			A-FBX100	
Stop drill No. 1 with external irrigation Range 8 - L = 10.5 mm		✓	✓	A-FBX105	
Stop drill No. 1 with external irrigation Range 8 & M - L = 11.5 mm	✓	✓	✓	A-FBX115	
Stop drill No. 1 with external irrigation Range 8 & M - L = 13 mm	✓	✓	✓	A-FBX130	
Stop drill No. 1 with external irrigation Range M - L = 15 mm	✓			A-FBX150	
Stop drill No. 1 with external irrigation Range 8 - L = 15.5 mm		✓	✓	A-FBX155	
Conical drill No. 2 with external irrigation Range 8 Point = 0.6 mm		✓		A-FCX200	
Conical drill No. 3 with external irrigation Range 8 Point = 0.6 mm		✓		A-FCX300	
Conical drill No. 4 with external irrigation Range 8 Point = 0.7 mm		✓		A-FCX400	
Conical drill No. 5 with external irrigation Range 8 Point = 0.9 mm		✓		A-FCX500	
Conical drill No. 2 with external irrigation Infinity Range Point = 0.6 mm			✓	A-FIX200	
Conical drill No. 3 with external irrigation Infinity Range Point = 0.6 mm			✓	A-FIX300	
Conical drill No. 4 with external irrigation Infinity Range Point = 0.7 mm			✓	A-FIX400	
Conical drill No. 5 with external irrigation Infinity Range Point = 0.9 mm			✓	A-FIX500	
Conical drill No. 2 with external irrigation M Range Point = 0.6 mm	✓			A-FMX200	
Conical drill No. 3 with external irrigation M Range Point = 0.6 mm	✓			A-FMX300	
Conical drill No. 4 with external irrigation M Range Point = 0.7 mm	✓			A-FMX400	
Conical drill No. 5 with external irrigation M Range Point = 0.9 mm	✓			A-FMX500	
Contra-angle screw tap 8 range Ø3.5		✓		A-TAR306	
Contra-angle screw tap 8 range Ø4		✓		A-TAR406	
Contra-angle screw tap 8 range		✓		A-TAR506	
SwissClip screw tap M range Ø3.2	✓			A-TAR303	
SwissClip screw tap M range Ø3.9	✓			A-TAR403	
SwissClip screw tap M range Ø4.7	✓			A-TAR503	
Contra-angle screw tap M range Ø3.2				A-TAR304	
Contra-angle screw tap M range Ø3.9				A-TAR404	
Contra-angle screw tap M range Ø4.7				A-TAR504	



■ Surgical instrumentation

Product name	Kit M	Kit 8	Kit infinity	Product code	Preview
Contra-angle screw tap range 8 & infinity Ø3.5			✓	A-TAR305	
Contra-angle screw tap range 8 & infinity Ø4			✓	A-TAR405	
Contra-angle screw tap range 8 & infinity Ø5			✓	A-TAR505	
Torque wrench	✓	✓	✓	A-CD045	
Square head adaptor for torque wrench				A-MCE070	
SwissClip short screw tool for contra-angle - M Range	✓			A-MCA222	
SwissClip long screw tool for contra-angle - M Range	✓			A-MCA322	
SwissClip short screw tool for ratchet wrench - M Range	✓			A-MCC159	
SwissClip long screw tool for ratchet wrench - M Range	✓			A-MCC254	
SwissClip short screw tool/screwdriver for contra-angle - 8 range		✓	✓	A-MCA230	
SwissClip long screw tool/screwdriver for contra-angle - 8 range		✓	✓	A-MCA325	
SwissClip short screw tool/screwdriver for ratchet wrench - 8 range		✓	✓	A-MCC163	
SwissClip long screw tool/screwdriver for ratchet wrench - 8 range		✓	✓	A-MCC258	
Drill extension	✓	✓	✓	A-PF661	
Drilling guide	✓	✓	✓	A-PER210	
Parallelism gauge	✓	✓	✓	A-JAU355	
Short hexagonal screwdriver - L = 10.5 mm	✓			A-CHC216	
Medium hexagonal screwdriver - L = 14.75 mm				A-CHM265	
Long hexagonal screwdriver - L = 19 mm	✓			A-CHL301	
Countersink for Ø3.5 / Ø3.2 implants				A-ALE300	
Countersink for Ø4 / Ø3.9 implants				A-ALE400	
Countersink for Ø5 / Ø4.7 implants				A-ALE500	
Circular surgical knife for Ø3.5 / Ø3.2 implants				A-BC350	
Circular surgical knife for Ø4 / Ø3.9 implants				A-BC400	
Circular surgical knife for Ø5 / Ø4.7 implants				A-BC500	
Circular surgical knife for Ø4.4 1 stage implants				A-BC450	
Circular surgical knife for Ø6 1 stage implants				A-BC600	
Trephine Ø inner = 2.5 mm - Ø outer 3.5 mm				A-TRE250	
Trephine Ø inner = 3.7 mm - Ø outer 4.7 mm				A-TRE370	
Trephine Ø inner = 4.2 mm - Ø outer 5.2 mm				A-TRE420	
Trephine Ø inner = 5.2 mm - Ø outer 6.2 mm				A-TRE520	
SwissClip ring - 8 range (x6)				A-MBP006	
SwissClip ring - M range (x6)				A-MBP007	
SwissClip ring - Infinity range (x6)				A-MBP008	
X-ray template for implants				A-TS600	



INSTRUMENTATION & ACCESSORIES



Prosthetic kit

All the essential elements for your practice of implant-supported prosthesis are gathered in the M prosthetic kit.

Ergonomic

New design for a compact and complete kit.

Easy-to-use

Components available in different sizes to suit all clinical cases.

Safety

Easy to clean and steam sterilisable.



Hexagonal point

2 Short manual screwdriver

3 Long manual screwdriver

4 Short tip for contra-angle

5 Long tip for contra-angle



Cruciform point

6 Short screw tool for multi-unit abutment

7 Long screw tool for multi-unit abutment

1 Torque wrench

Dual function



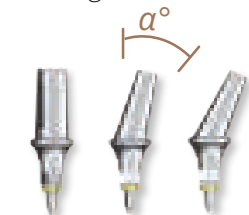
8 Torque wrench adaptor (can be connected with square head tips)

9 Short tip for torque wrench

10 Long tip for torque wrench

Radel® box
Sterilisable
134°/18 min

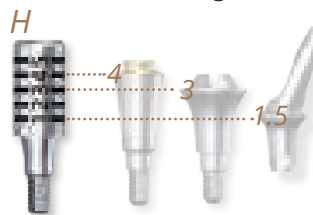
14 Angulation kit



Tips for use

The angulation kit makes it easy to select the appropriate angulation for the clinical case requiring treatment.

13 Shoulder height selector



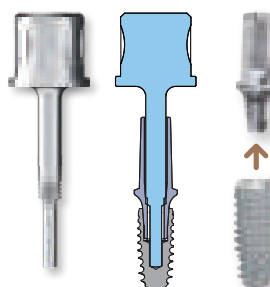
Tips for use

The shoulder height selector measures the available gingiva.

M For M abutment:

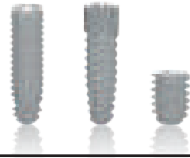
11 Short abutment extractor
For M abutment with shoulder ≤ 0.7 mm

12 Long abutment extractor
For Z1-M and M abutment with shoulder ≥ 1.5 mm



Maintenance

The abutment extractors are needed to disable the Morse taper between implant and prosthetic abutment.



Main screws sold per unit and tightening torque

Product name	Range	Product code	Preview
Screw extraction kit Range 8 - 4 elements		A-KEV600	
		A-KEV800	

Product name	Range	Tightening torque	Product code	Preview
20°/30° Multi-unit abutment main screw		30 N.cm	VIM045	
20°/30° Multi-unit abutment secondary screw		30 N.cm	VIMC045	
Standard abutment screw		30 N.cm	VIM052	
Narrow abutment screw		30 N.cm	VIM053	
Z1-M multi-unit abutment screw		30 N.cm	HO-VIP034	
Short abutment screw Hg < or = 0.7 mm		30 N.cm	VIM051	
Long abutment screw Hg = 1.5/3/5 mm / Z1-M abutments		30 N.cm	VIM064	
Laboratory screw L = 21.1 mm		Manual / 15 N.cm	VTD185	
Transfer screw L = 15.5 mm		Manual / 15 N.cm	VTI155	
Laboratory screw L = 20.6 mm		Manual / 15 N.cm	VTD186	
Transfer screw L = 15.7 mm		Manual / 15 N.cm	VTI157	

Maintenance

For any other screw product code request, please contact us.

Prosthetic instrumentation

Product name	Kit	Kit	Product code	Preview
Radel prosthetic box - M range		-	A-COF007	
Radel prosthetic box - 8 range	-		A-COF002	
Short hexagonal screwdriver - L = 10.5 mm			A-CHC216	
Medium hexagonal screwdriver - L = 14.75 mm	-	-	A-CHM265	
Long hexagonal screwdriver - L = 19 mm			A-CHL301	
Short hexagonal tip for contra-angle			ET 600	
Long hexagonal tip for contra-angle			ET 700	
Short screw tool for multi-unit abutment			A-MPC103	
Long screw tool for multi-unit abutment			A-MPC198	
Torque wrench			A-CD045	
Square head adaptor for torque wrench			A-MCE070	
Adaptor for contra-angle screwdriver compatible with all brands	-	-	A-MAC070	
Short hexagonal tip for torque wrench	-	-	A-ECD007	
Long hexagonal tip for torque wrench	-	-	A-ECD006	
SwissClip angulation kit - M range		-	KP202	
SwissClip angulation kit - 8 range	-		KP201	
Shoulder height selector - M range		-	M-KHE500	
Shoulder height selector - 8 range	-		O-KHE500	
Locator® screw tool	-	-	A-MEL100	
Short hexagonal screw tool	-	-	A-ME007	
Long hexagonal screw tool	-	-	A-ME006	
Long extractor screw tool for abutment For Z1-M abutment with shoulder > 1.5 mm		-	A-EXT240	
Short extractor screw tool for abutment For M abutment with shoulder < or = 0.7 mm		-	A-EXT230	



Unique, like your smile

✓ **Aesthetic solutions* :**

Lumineers® thin veneers

✓ **Implant solutions :**

BL implants systems

Z1® implant systems

✓ **Equipment solutions* :**

NSK® Surgical Motor [MD Class IIa - Manufacturer Nakanishi Inc.]

Perioptix® Optical Systems [MD Class I and custom-made - Manufacturer Denmat LLC]

SleeperOne® Electronic Anaesthetic Injection [MD Class IIa - Manufacturer Dental HiTec SARL]

Sapphire® Curing Light [MD Class IIa - Manufacturer DenMat LLC.]

Carestream® Imaging Solutions [MD Class I & IIa - Manufacturer Carestream Health Inc.]

* Availability according to country.



30 years
Quality
Innovation
Made in
France
International
Presence

The TBR[®] team

Unique, like your smile.

A multidisciplinary manufacturer

TBR is an **international company** with **headquarters based in France**. It has **specialised** in the design, manufacture and marketing of unique dental implant solutions for over 30 years:

- ✓ Aesthetic solutions
- ✓ Implant solutions
- ✓ Equipment solutions

Your partner of choice

We aim to become an **irreplaceable partner** for dental professionals around the world. We share the same ambitions - to offer patients the best possible functional and aesthetic restorations - and are here to support your services with high quality products.

Authentic products

We aim to help you meet patient expectations with our **authentic products and technologies**. We are also keen to help you **communicate to patients** in order to grow your practice.

TBR : Titanium Biointegrated Root

The bonsai tree has been chosen to represent the TBR Group because it is the perfect symbol of our ambitions for our products: endurance, longevity and resistance. Its roots have the vital function of ensuring its health and a long lifetime, mirroring what we aim for our dental implants to provide.




Ready to start?


Thousands of dentists around the world choose the unique TBR implants because they want the best treatment available for their patients.


Are you ready to offer this unique solution?



Unique, like your smile

 GROUPE TBR | 24, impasse René Couzinet
31500 Toulouse – France

 +33 (0) 5 62 16 71 00

 contact@tbr.dental

 **Find us online**
www.tbr.dental

The products mentioned in this document are medical devices intended for aesthetic or functional smile rehabilitation, by authorized health professionals. These medical devices are regulated health products that, under this regulation, bear the CE marking. Read the instructions carefully before using the products. All the essential information for correct use of these devices is available from SUDIMPLANT SAS (TBR Group).